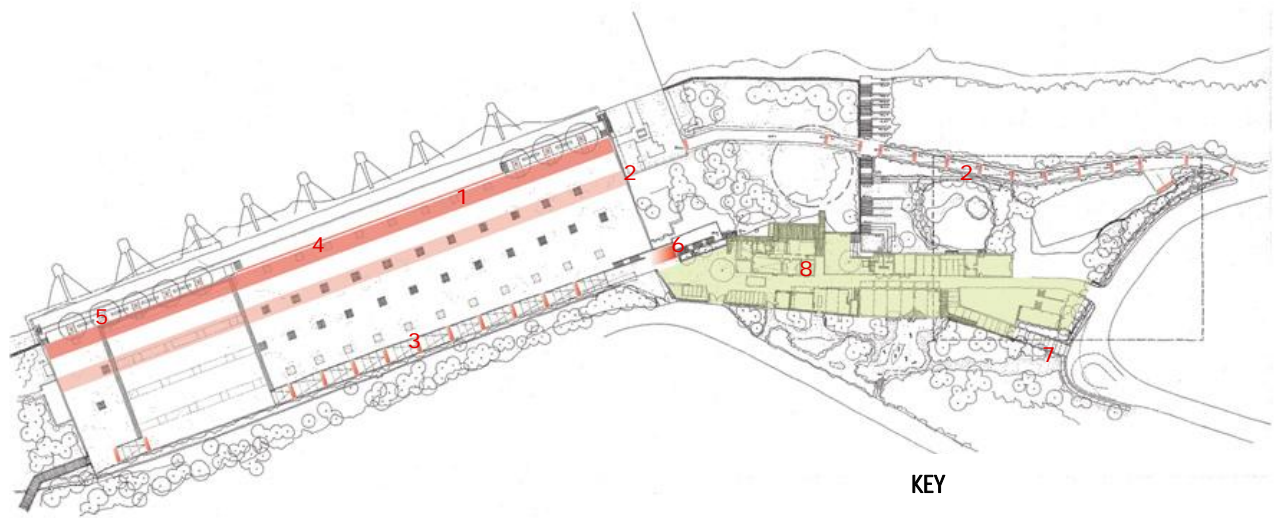


Lighting and Access Plan

The strategy for lighting is to illuminate 24hr access ways and the street for after dark activities and to minimise lighting elsewhere on the site to protect the bat colony roosting in tunnel 4 as well as conserving energy. Lighting for access paths will be on demand and triggered by sensors .

Since the platform will be open at night, low level lighting to the edge will help to define the space –this can be augmented by special lighting when required (eg for festivals and performances).

The upper terrace (Sustainability Centre and Former Power House) can be locked for security when required.



KEY



- 1 Lighting of tunnel 1 as part of interpretation strategy
- 2 24 sensor lighting to access road and tunnel 2
- 3 Low level lighting on ramp landings
- 4 Low level lighting for sitting edge
- 5 Soft up lighting to Figs on edge of platform
- 6 Low level lighting to lookout and exit point
- 7 Entry lighting
- 8 Street lighting off buildings

Lighting and Access Plan : NTS

