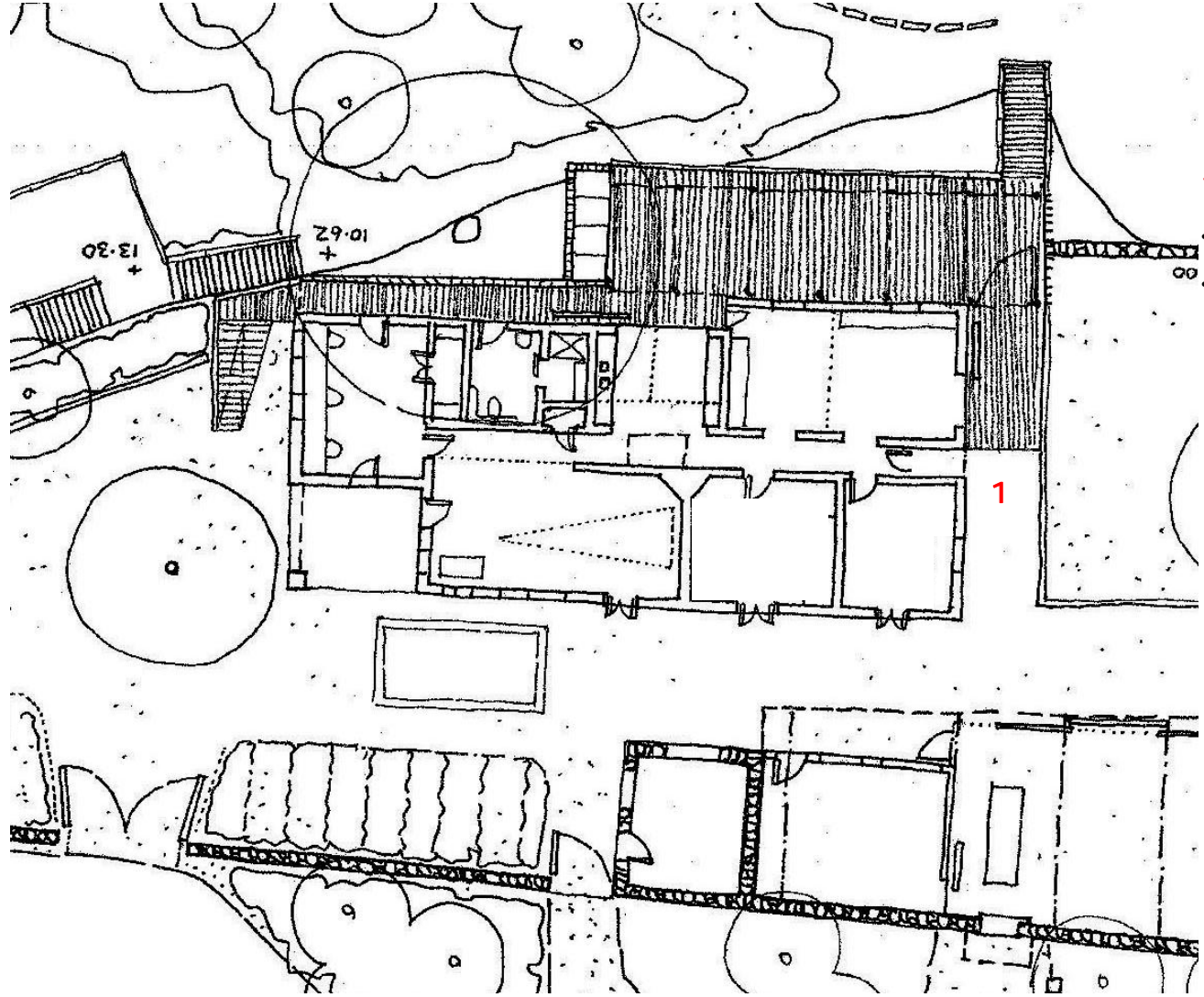


WAVERTON
COAL LOADER
Sustainability Centre

HASSELL



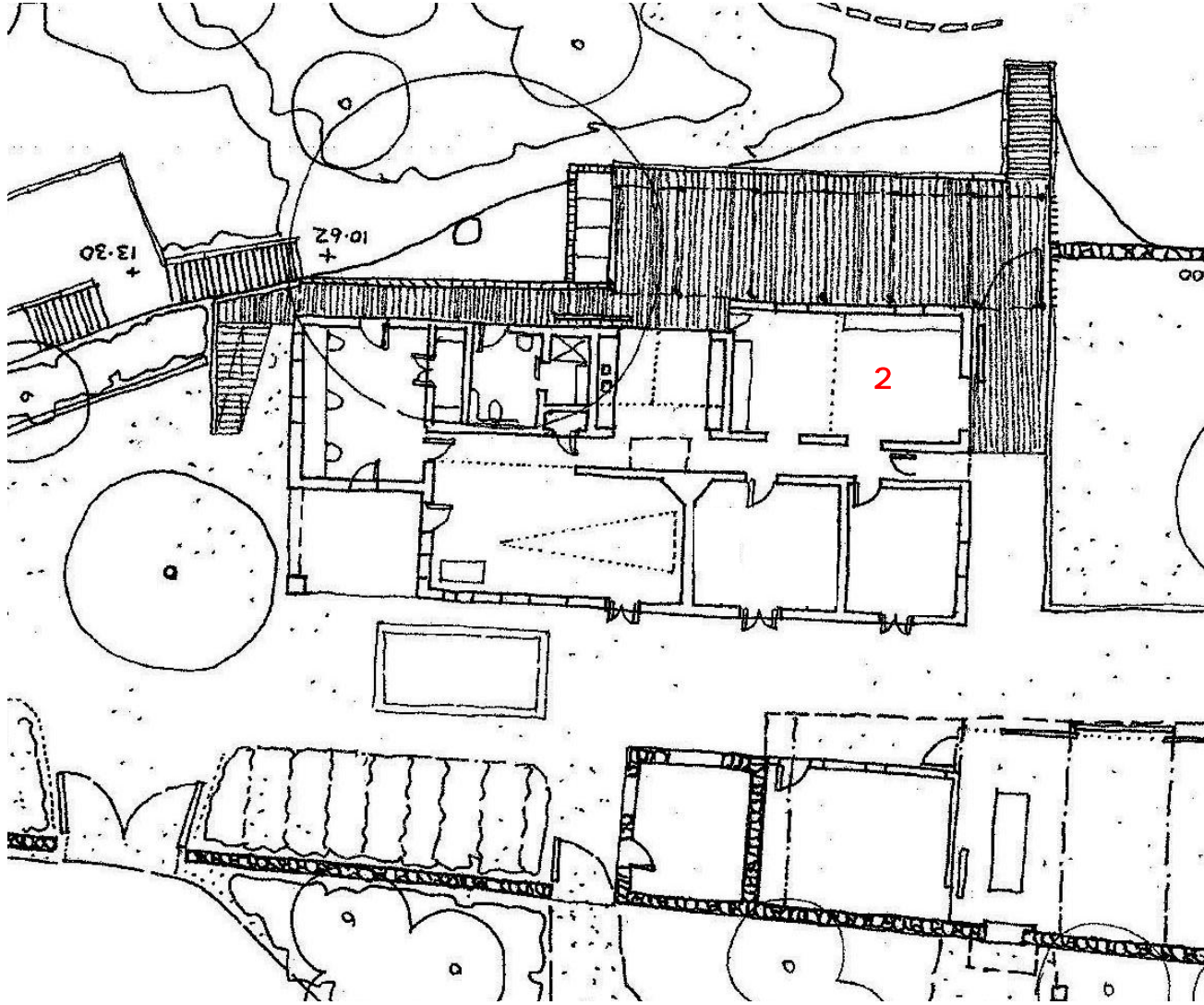
1 PUBLIC ENTRY

- Introduction and orientation
- Access to adjacent Cafe




DEMONSTRATION




- Signage- vision statement and key messages
- Signage- heritage interpretation
- Signage- environmental systems interpretation eg. Water cycle management, Energy etc)
- Visible equipment: sun lizard heating system, solar panels & rainwater tank
- Visible herb garden / compost / worm farm (recycling)








- 2 RECEPTION/DISPLAY**
- Re-use former bedroom for new reception thru removal of internal wall
- Entry and nerve centre





 **The Hawkesbury Earthcare Centre** 
Sustainability Fair 2005
Learning for Sustainability
Cnr Campus Dr. & Science Rd. UWS Hawkesbury Campus, Richmond

  
Seminars *Kids Activities*

  
Entertainment *Get Together*

  
Stalls *Practical Advice*

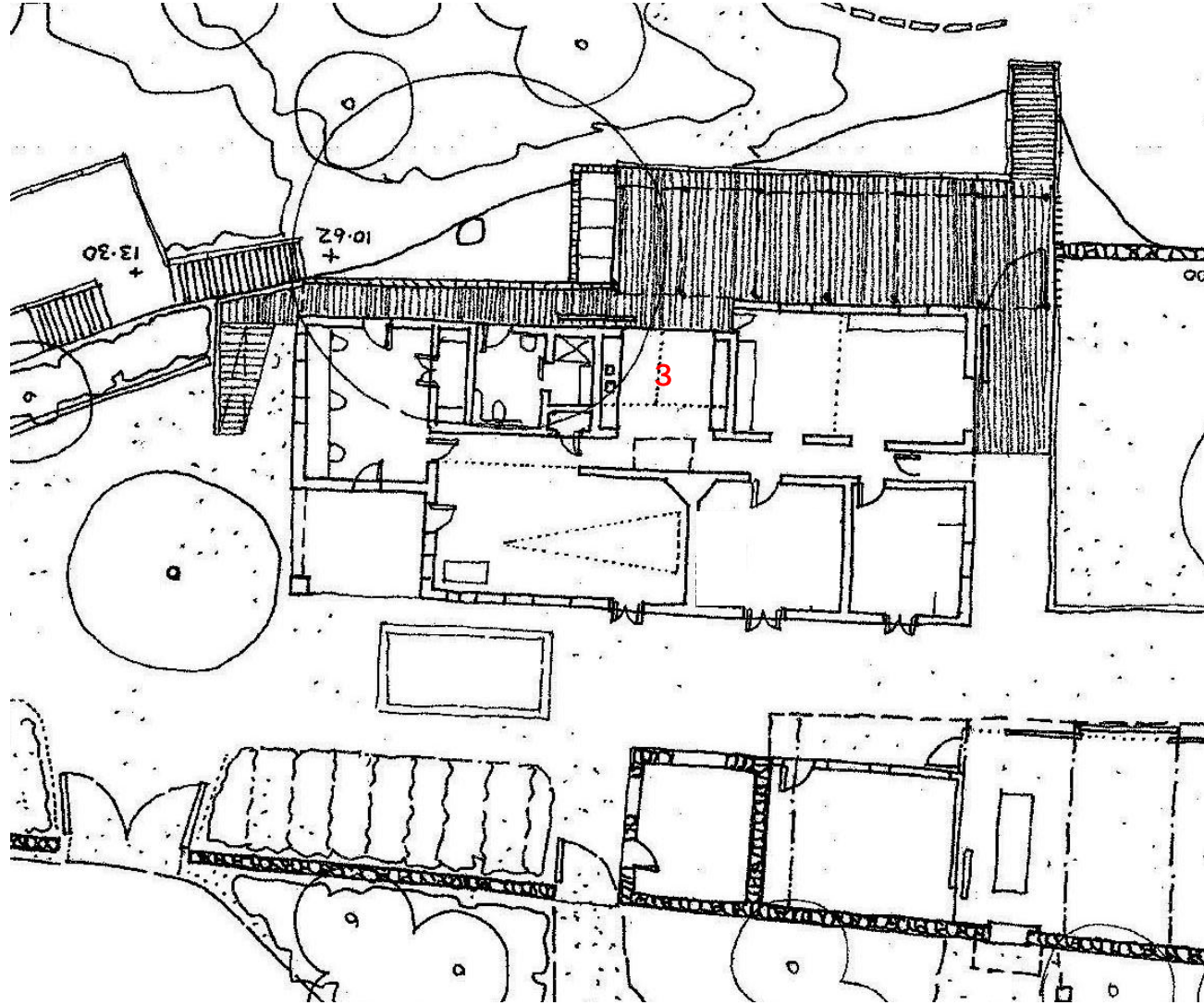
Enquiries:
Eric Brocken
P: 4567 8424
M: 0438 731 712
E: info@earthcare.org.au
W: www.earthcare.org.au

Saturday September 17th

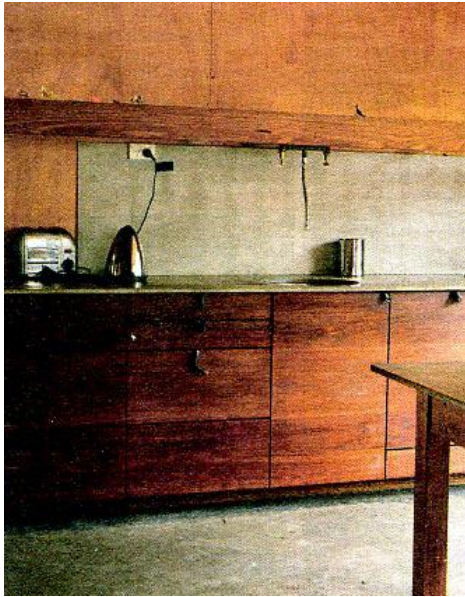
DEMONSTRATION: static information about centre

- Display of energy consumption data
- Ceiling fans and cross ventilation action
- Community pin up boards
- Provide information on community programs and training
- Visible ducted heating from sun lizard



3 KITCHEN / INFORMAL LOUNGE

- Remove existing bathrooms (containing inefficient appliances) and demolish internal walls up to door height
- Social heart of the centre

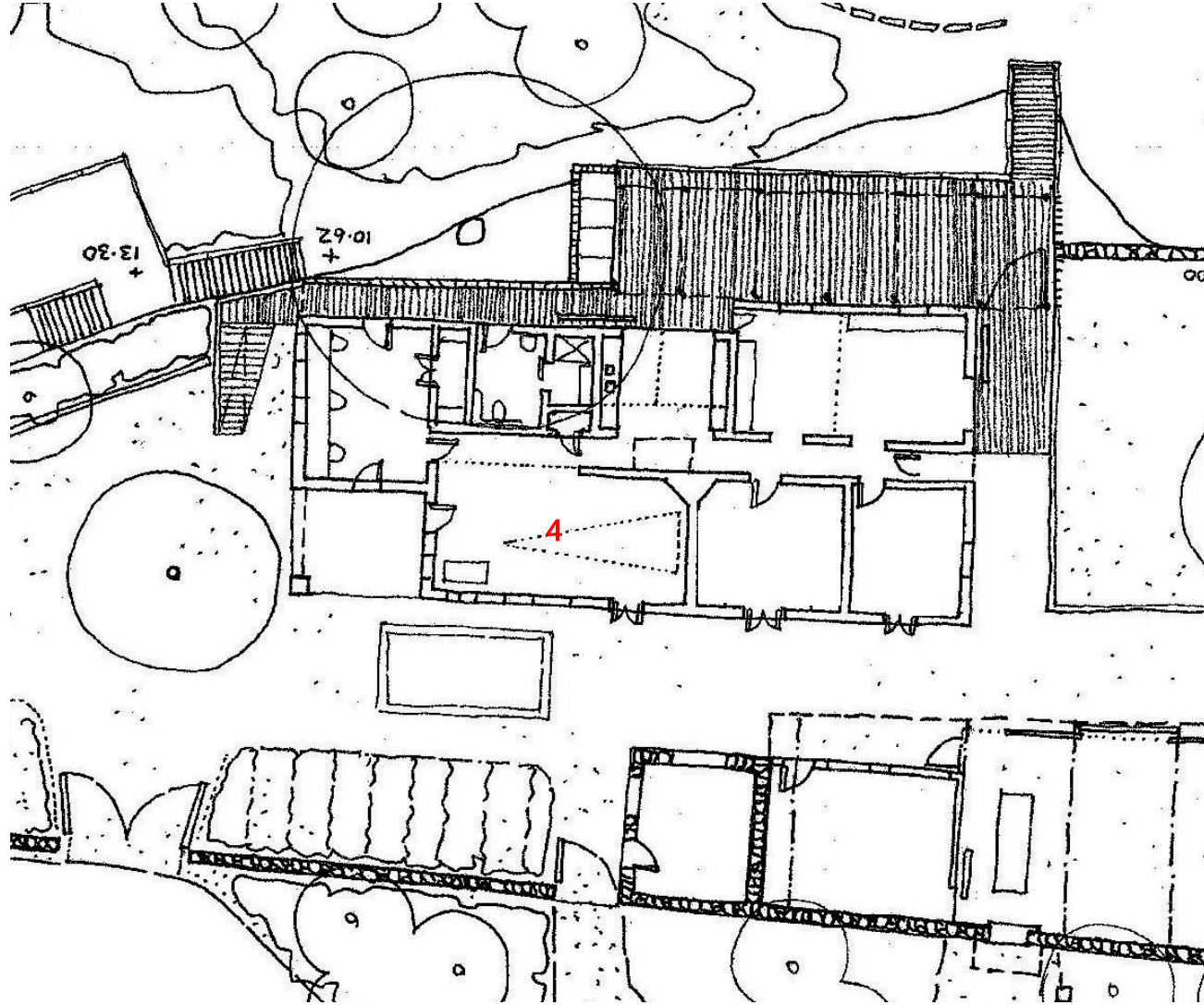


HASSELL

DEMONSTRATION

- Use of environmentally friendly materials for kitchen joinery
- Use of efficient appliances
- Demonstrate water filtration system for drinking water
- Use of ventilated skylight for light and air
- Information on community programs and training
- Shade to west facing windows
- Ducted heating from sun lizard
- Use good quality second hand furniture
- Simple static signage on floor and walls





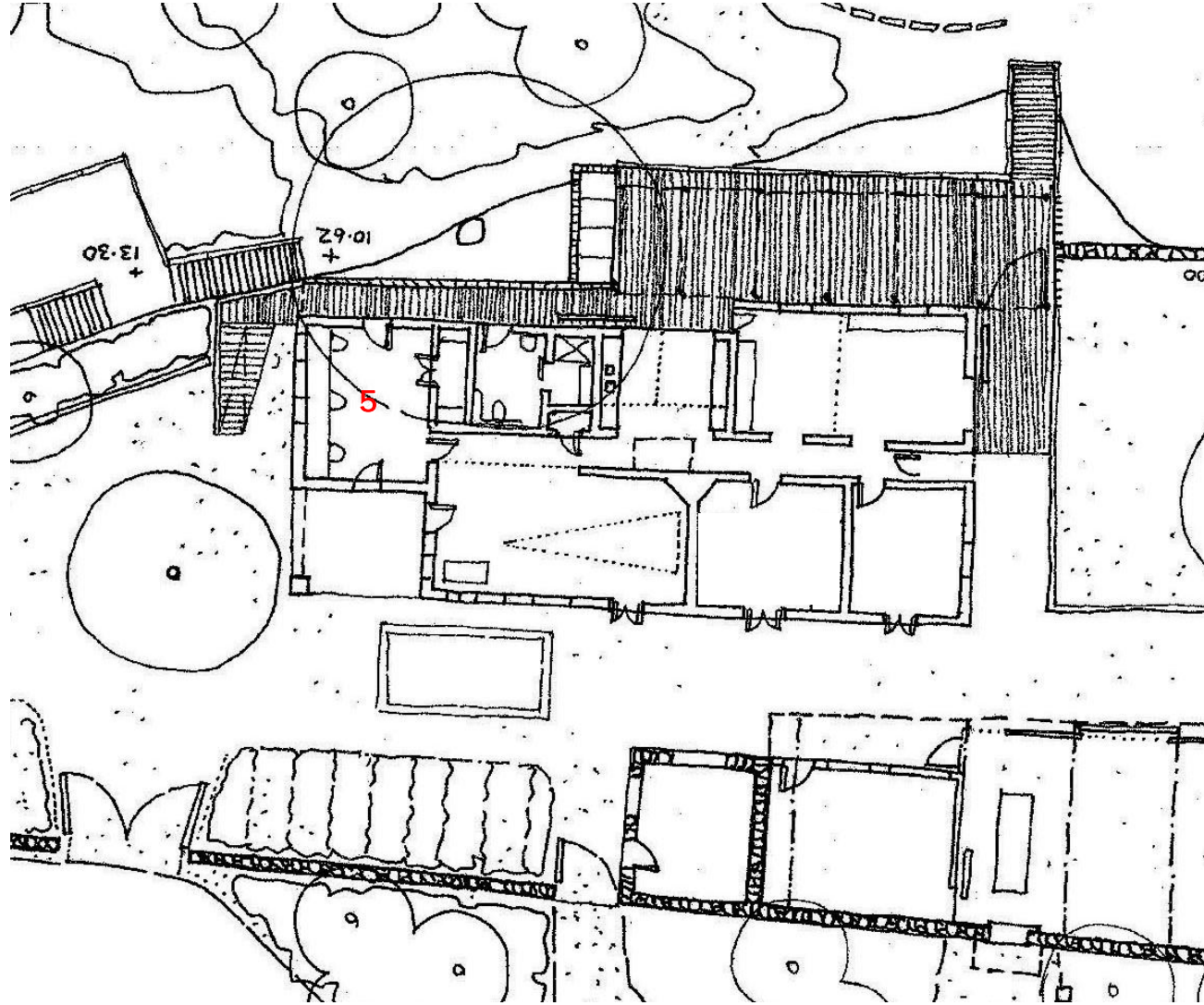
4 FORMAL PRESENTATION AREA

- Retain proportion of former administration office (with weigh bridge machinery) for heritage interpretation
- Room for formal and informal learning



DEMONSTRATION

- Formal and informal training (workshops and lectures)
- Interactive exhibitions
- Efficient lighting
- Low level louvres for cross ventilation
- Glow in the dark emergency exit signs



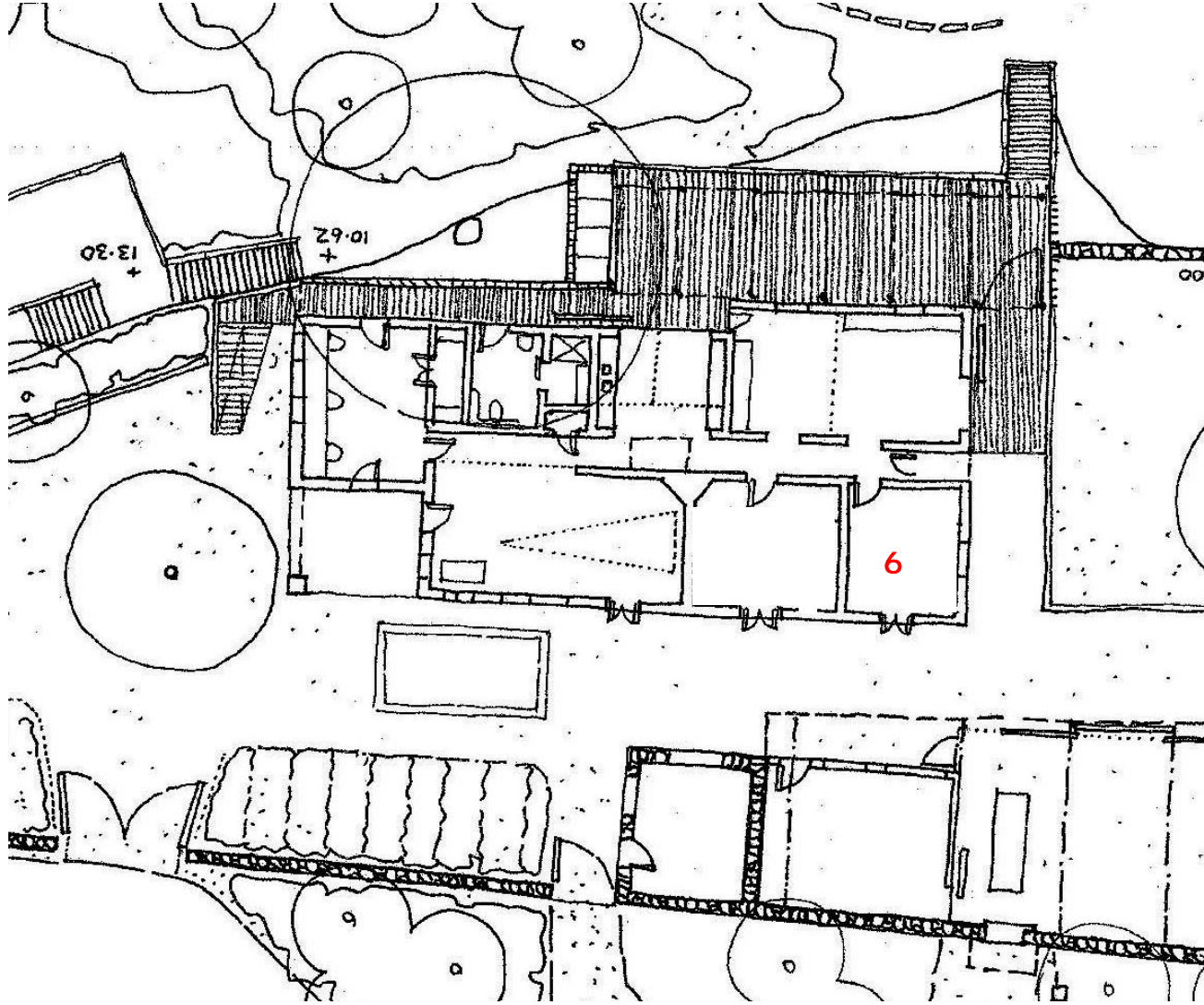
5 RESOURCE ROOM

- Retain existing heritage fabric for interpretation of Coal Loader platform
- Provision of secured storage for IT equipment and book and catalogue resources



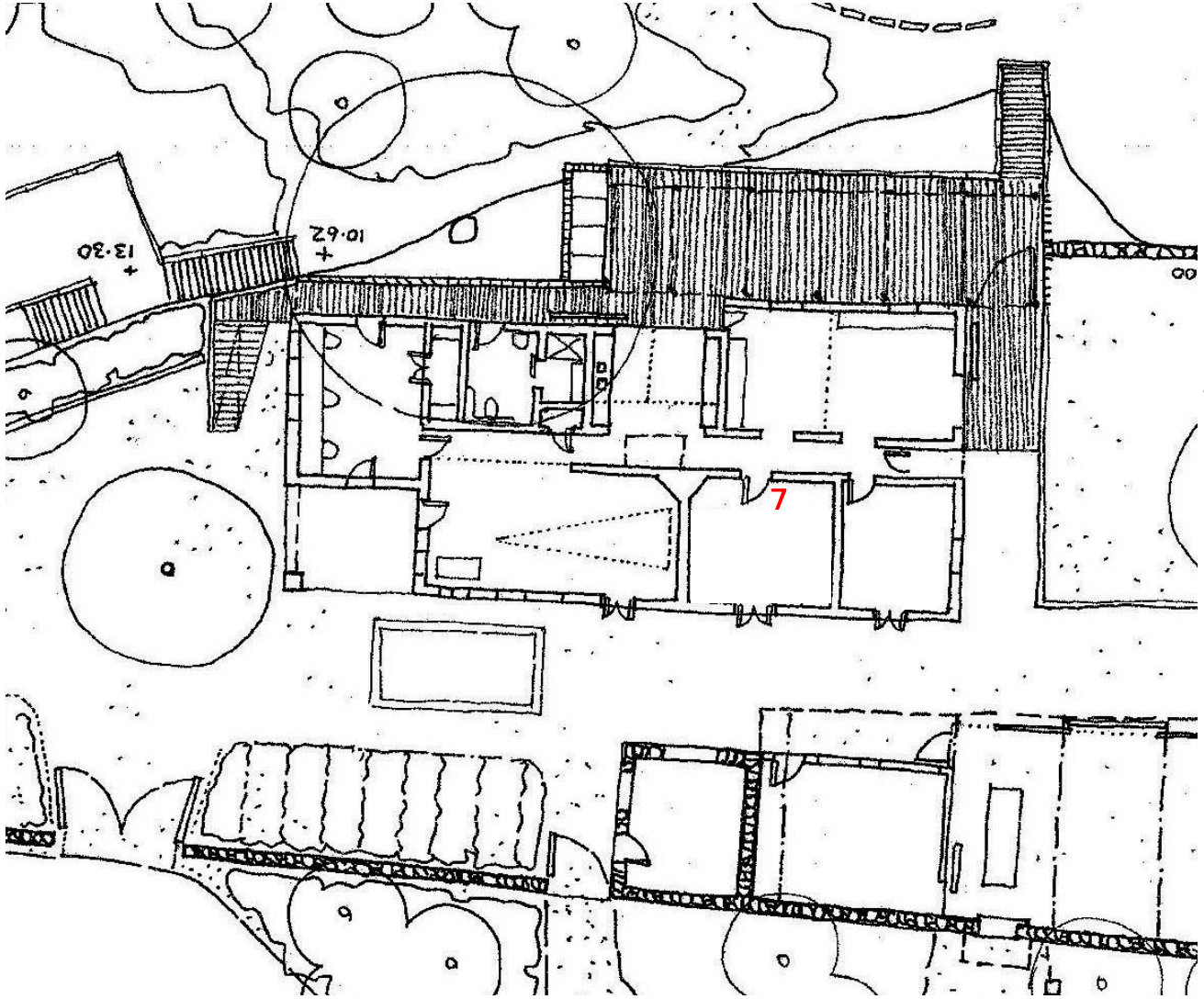
DEMONSTRATION

- Access information via computer and traditional library forms
- DVD usage
- Ceiling fans and efficient lighting
- Joinery from low 'e' materials



6 ADMINISTRATION

- Removal of existing window and install break out doors with low level louvres for cross ventilation
- Private workroom



7 DEMONSTRATION ROOM

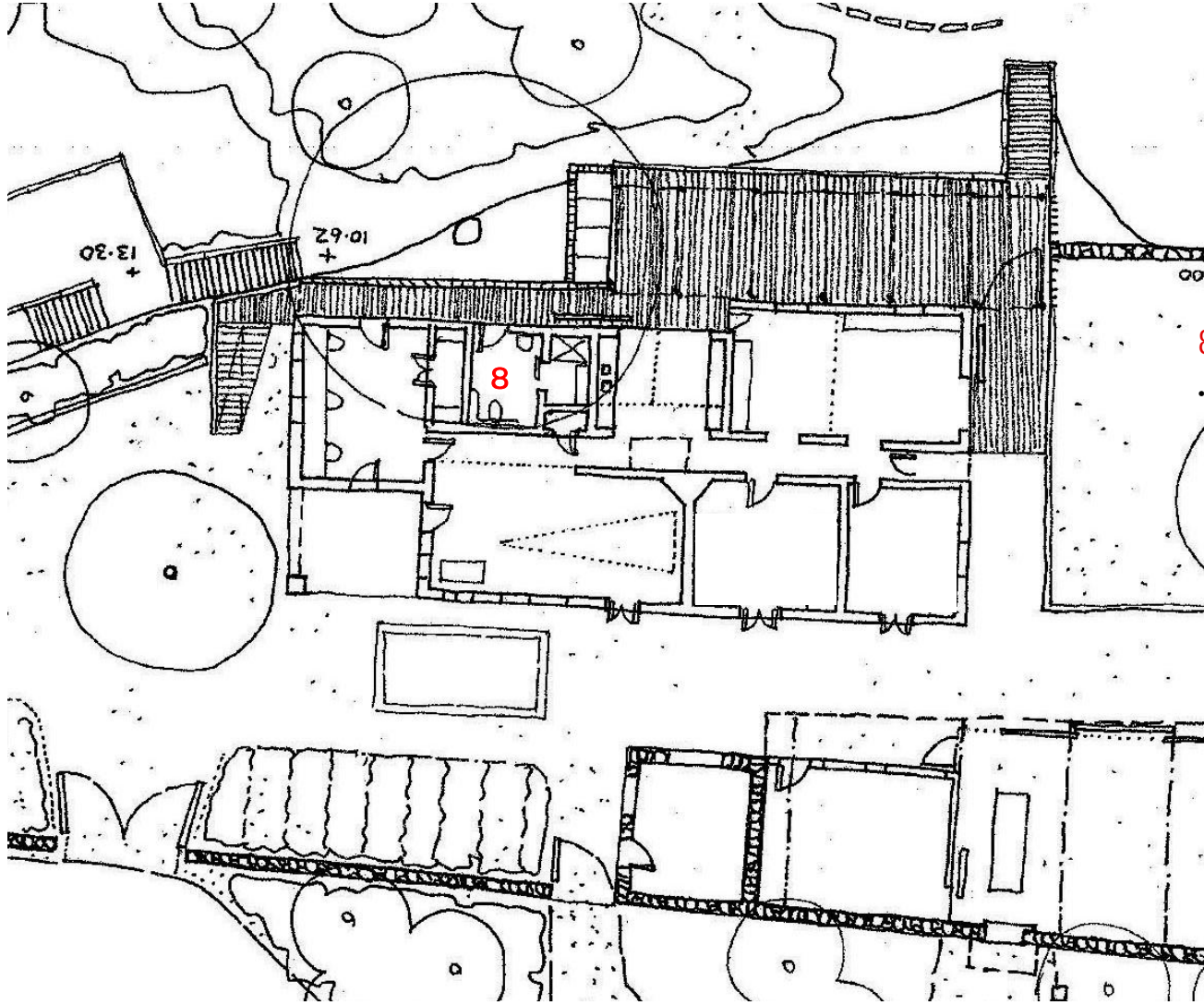
- Samples and insitu demonstration of environment systems



DEMONSTRATION

- Fittings and recycled building materials
- Other ESD applications
- Paint systems (brush outs)
- Viewports to see sun lizard workings
- Acoustic rated wall mounted vents





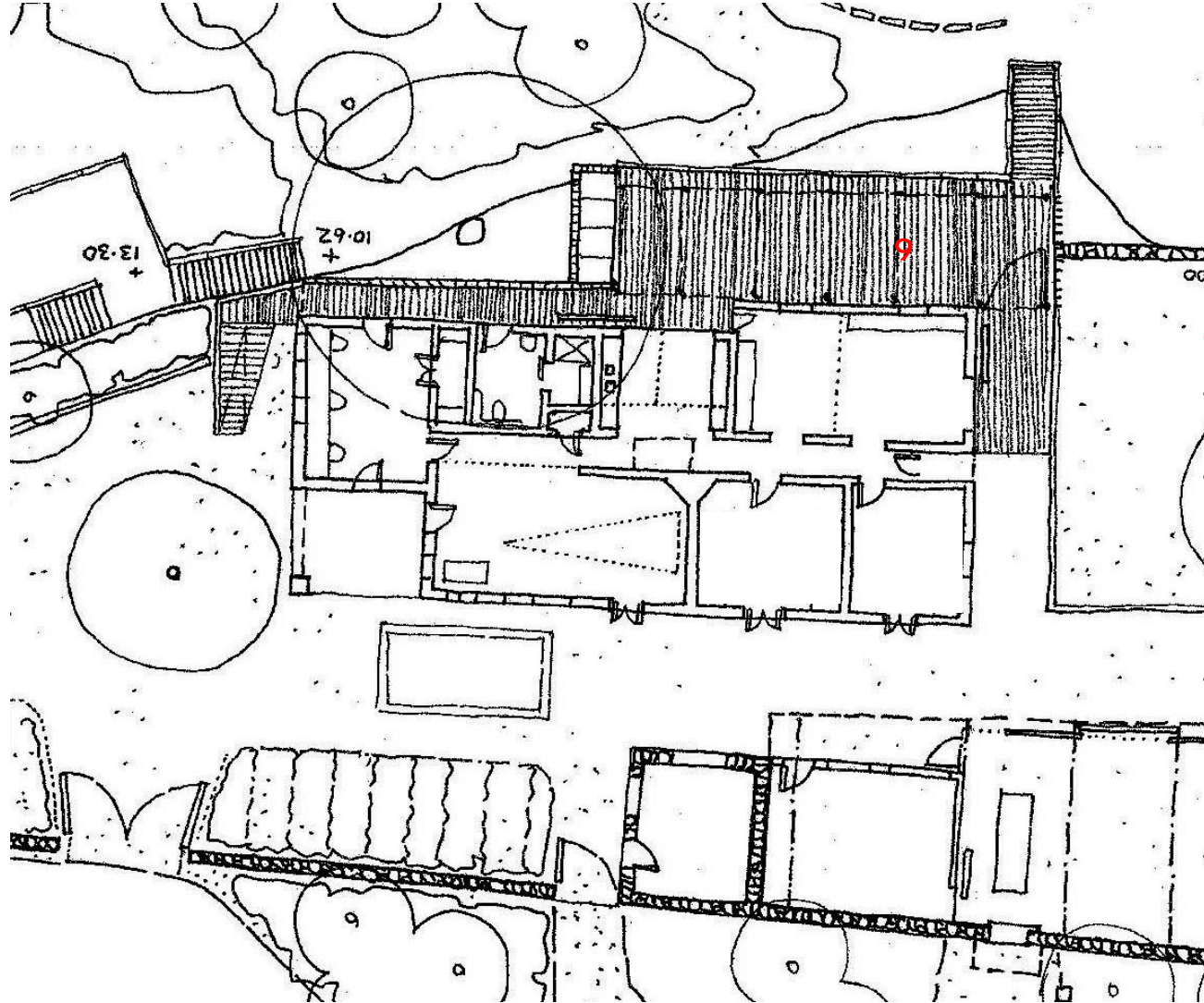
8 BATHROOM

- Demolish existing kitchen and convert to accessible bathroom and shower



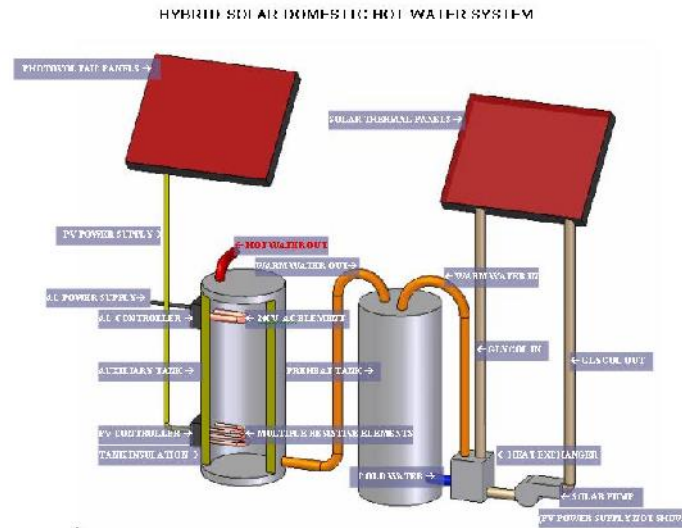
DEMONSTRATION

- Efficient fittings
- Natural ventilation assisted with solar powered exhaust fan
- Rainwater flushing of toilets demonstrated through surface mounted pipe work



9 BREAK OUT TERRACE

- New terrace and shade pergola for informal workshops
- New recycling bin enclosure adjacent to kitchen area
- Location of hot water tank with connection to solar panels on roof of pergola
- Below deck area could contain bladders for rainwater collection (subject to sponsorship).



DEMONSTRATION

- Hot water tank connected to roof mounted solar panels
- Recycling bins adjacent to kitchen
- Western sun shading
- Use of recycled hardwood to construct pergola
- Information conveyed through signage