



Report to General Manager

Attachments:
1. Sketch design;

SUBJECT: McMahons Point Community Preschool and Early Learning Centre Playground

AUTHOR: Martin Ellis, Director, Community and Library Services

ENDORSED BY: Adrian Panuccio, A/General Manager

EXECUTIVE SUMMARY:

As part of a review of Childrens Services in Council buildings and their playgrounds, a sketch design and estimate of costs for refurbishment of the playground of McMahons Point Community Preschool and Early Learning Centre has been commissioned from Architects of Arcadia's Fiona Robbe. This architect is a long serving member of the International Playground Standards committee and the designer of Cammeray Childrens Centre's playground.

The Centre's playground is a most difficult site and unquestionably the least well presented of all Council's playgrounds within community facilities. It is non compliant in many respects (significantly sloping, uneven surface and concrete path running through it being some of its most obvious deficiencies). This gives the staff no alternative but to arrange the play equipment in ways that are not developmentally ideal for the children. Its one unusual aspect (large concrete footbridge passing over it), has been considered by the architect as a unique feature, one that can allow for innovative and changeable play structures to be suspended from it.

FINANCIAL IMPLICATIONS:

The minor refurbishment of the playground originally envisaged for this year is no longer appropriate and therefore not recommended. An estimate of probable costs for an upgrade to bring the playground into compliance has been received from the Architect.

Comment by Responsible Accounting Officer:

The additional funds required for this refurbishment can be funded from unspent S.94 Child Care contributions. However, this will reduce the potential pool of funds available for children's services in the 2018/19 capital works program.

RECOMMENDATION:

1. THAT Council seek Tenders for a refurbishment of the McMahons Point Community Preschool and Early Learning Centre playground as outlined in the report

LINK TO COMMUNITY STRATEGIC PLAN

The relationship with the Community Strategic Plan is as follows:

Direction: 4. Our Social Vitality

Outcome: 4.8 Enhanced community facilities, information and services
4.9 Enhanced community safety and accessibility

BACKGROUND

Council undertakes annual inspections of its child care centre playgrounds and quarterly inspections of the playground equipment. The McMahons Point site has been identified as the first priority among playgrounds for an upgrade following advice it fails to meet standards.

The Centre is on the lower level of the two-storey McMahons Point Community Centre in Blues Point Rd. It was established by Council in 2005 as a parent managed occasional care service and has now developed into the fully licensed and accredited service. The space and playground are leased to the Centre until 30 April 2021. The playground has not been upgraded in 12 years.

CONSULTATION REQUIREMENTS

Community engagement will be undertaken in accordance with Council's Community Engagement Protocol.

SUSTAINABILITY STATEMENT

The sustainability implications were considered and reported on during the initiation phase of this project.

DETAIL

The playground design provided with this report has been developed in consultation with the staff and parents of the Centre

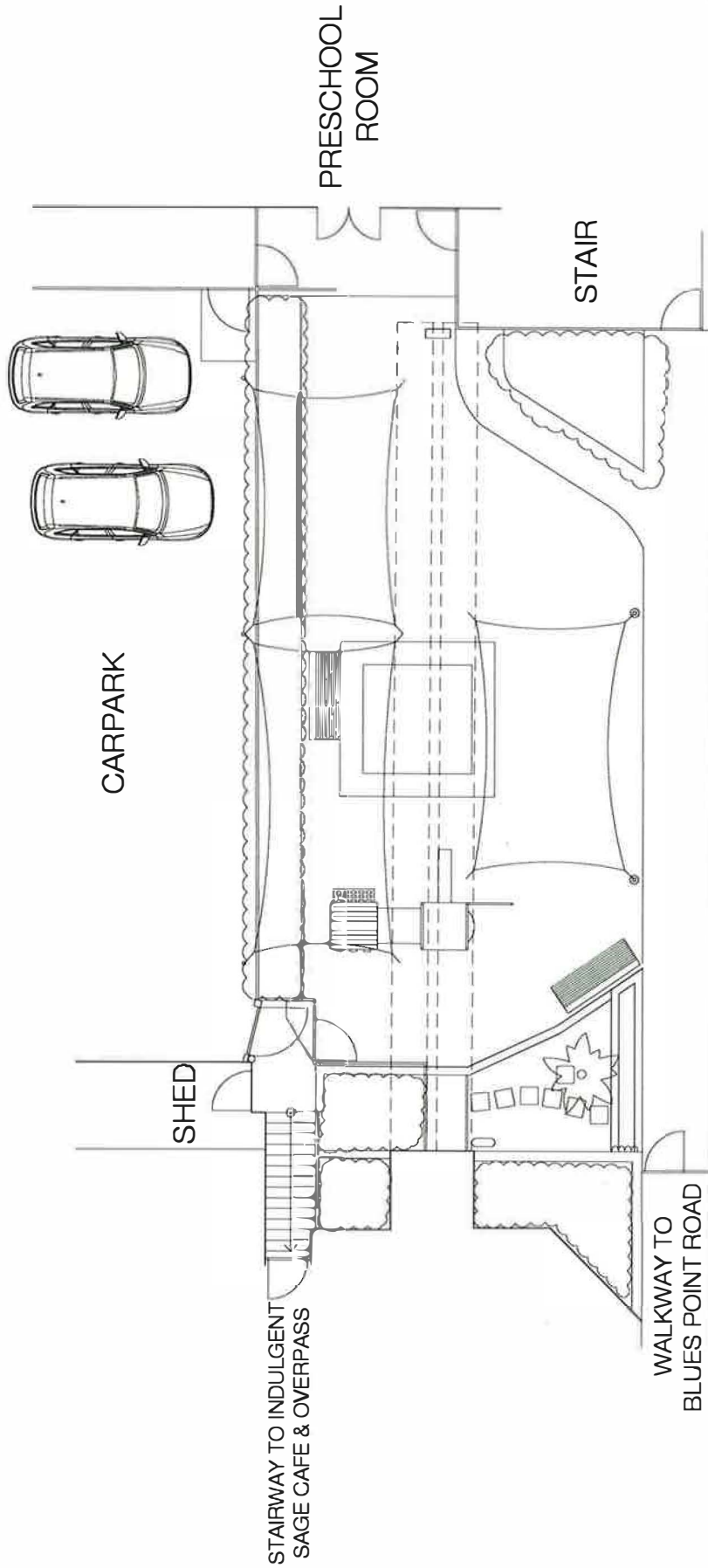
The Centre shares a parking area with the users of the community hall on the upper level and a leased space is provided to the Manager of the Council-owned Blues Point Café, also on site.



Uneven surface



Concrete path

1:50
@ A1

PREPARED FOR:

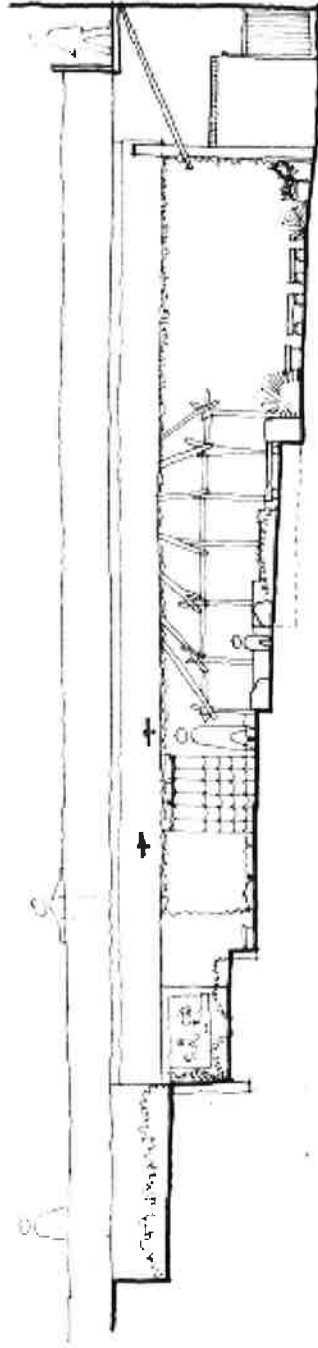


McMahon's Point Community Preschool & ELC Base plan



Scale
Job No
Date
Draw No

1:50 at A1
1708
May 2017
BP_01



1:50
@ A1

PREPARED FOR:

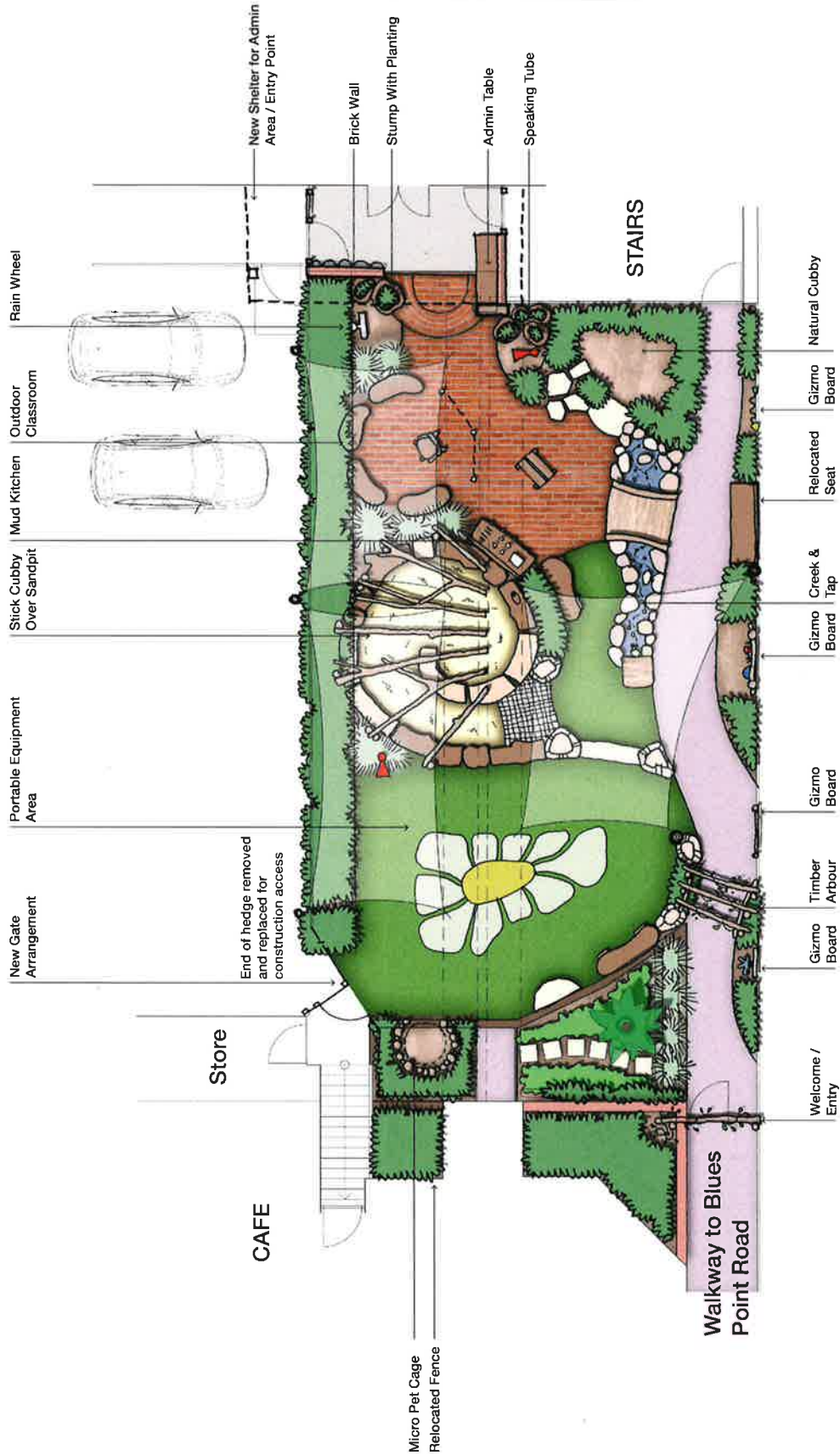
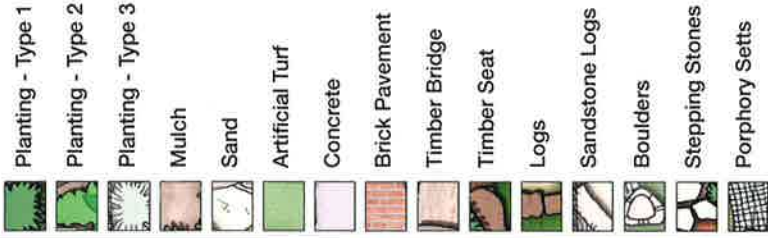


McMahon's Point Community Preschool & ELC Section



Fiona Robb
Landscape architecture
horticulture and play space design
100 Acacia Road Acacia NSW 2159
Ph: 02 9438 1000
www.fionarobb.com.au

Scale:
Job No: 1708
Date: October 2017
Dwg No: CP-02

Legend:

1:50
@ A1

PREPARED FOR:



McMahon's Point Community Preschool & ELC Concept Plan



Fiona Robb
Landscape Architecture
108 Aranda Road Aranda NSW 2159
Australia
www.fionarobb.com.au

Scale: 1:50 at A1
Job No: 1708
Date: October 2017
Dwg No: CP-01