



## Report to General Manager

Attachments:

1. Summary of Submissions Received
  2. Family and Children's Services Strategy 2018-2024
- 

**SUBJECT:** Family and Children's Services Strategy 2018-2024 – Post-Exhibition Report

**AUTHOR:** Eric Poulos, Community Worker, Social Planning

**ENDORSED BY:** Martin Ellis, Director Community and Library Services

### EXECUTIVE SUMMARY:

The Draft Family and Children Services Strategy 2018-2024 was placed on public exhibition during September 2018.

Priority actions are:

1. Continue to make a contribution to affordable child care options (maintain current grants and subsidies program).
2. Keep children safe through playground audits and maintenance, arborists' reports and tree maintenance; operating Vacation Care through a high quality contractor; and coordination of Family Day Care Educators to meet National Quality Framework targets.
3. Continue to implement the Strategies in the Recreation Needs Study 2015.
4. Refurbish North Sydney Olympic Pool and monitor further opportunities to expand existing recreation facilities to meet projected demand.
5. Work with Kelly's Place Children's Centre's Board to manage impacts arising from the Crows Nest/St Leonards Metro development due for completion in 2024.
6. Refurbish Cremorne Early Childhood Centre to meet community expectations.
7. Monitor affordable opportunities to expand Long Day Care Centres' capacity to sustainable numbers.
8. Revitalise centre-based playgrounds to meet community expectations.
9. Commission an architectural review of Forsyth Park Community Centre as a potential Before and After School Care site.

No submissions contrary to the Direction of the Strategy were received.

Of the submissions (60 received) all but one advocated for more access to sporting facilities, but some made additional comments. One submission addressed the availability and affordability of childcare. Others addressed the increased numbers of families in the area due to construction activity and the resulting need for recreational and leisure facilities, for indoor and outdoor sports facilities, and gave specific advice about parks, bicycle paths and support for Council's free car restraint checking service.

In respect of these submissions, the Director of Open Space and Environmental Services advises:

---

*The 2015 North Sydney Recreational Needs Study also identified the high demand in North Sydney for sport and physical activity, from residents and workers and the student population. The current demand for these facilities outstrips the supply of outdoor playing fields and indoor courts. The 2015 North Sydney Recreational Needs Study identifies a series of strategies for Council to pursue to counter balance the current and future demand and supply issues and as funding and opportunities become available the strategies are being implemented.*

**FINANCIAL IMPLICATIONS:**

No additional financial implications have arisen from the exhibition period, given the emphasis placed on the need for more indoor and outdoor sporting facilities is acknowledged in Council's Community Strategic Plan, Delivery Plan and Recreation Needs Study.

**RECOMMENDATION:**

- 1. THAT** the Family and Children's Services Strategy 2018-2024 be adopted.
  - 2. THAT** submissions on the need for additional indoor and outdoor sporting facilities be noted, along with Council's acknowledgment in several key strategies of this identified need.
-

## LINK TO COMMUNITY STRATEGIC PLAN

The relationship with the Community Strategic Plan is as follows:

- Direction:           1. Our Living Environment  
                          4. Our Social Vitality
- Outcome:            1.4 Public open space and recreation facilities and services meet community needs  
                          4.1 North Sydney is connected, inclusive, healthy and safe  
                          4.3 North Sydney supports lifelong learning

## BACKGROUND

On 27 August 2018 Council resolved:

- 1. THAT the Draft Family and Children's Services Strategy 2018-2024 be placed on public exhibition for a minimum of 28 days.*
- 2. THAT should Council receive submissions, a further report be prepared for Council's consideration. Should it receive no submissions, Council consider the Family and Children's Services Strategy 2018-2024 as adopted at the end of the closing period for submissions.*

The Draft Family and Children Services Strategy 2018-2024 was placed on public exhibition from Thursday 6 September until Wednesday 3 October, 2018.

## CONSULTATION REQUIREMENTS

Community engagement has been undertaken in accordance with Council's Community Engagement Protocol. Information about the public exhibition was listed on Council's online engagement portal - Your Say and placed in the Mosman Daily's corporate advertisement, distributed to stakeholders and networks, posted on social media and a hard copy of the draft Strategy was made available at Council's Customer Service Centre and Stanton Library. Fifty-nine responses were received through 'Your Say' and one via Facebook.

## SUSTAINABILITY STATEMENT

The sustainability implications were considered and reported on during the initiation phase of this project.

## SUBMISSIONS

### General Feedback

- Lack of availability and affordability of childcare services;
  - With increased numbers of families due to developments, the need to increase and improve recreational and leisure facilities, including parks, playgrounds, space for community gardens, water facilities, bushland, picnic areas and in particular, indoor and outdoor sports facilities; and
-

- Providing facilities to encourage active and healthy lifestyles, particularly for children so as to increase fitness, reduce obesity and create community friendships.

**Specific Feedback**

- Waiting list at Kelly’s Place Long Day Care Centre is 2.5 years.
- Basketball facilities at Demonstration School and Cameragal High not available to the public after school hours or on weekends.
- Shade structure needed over the existing playground at Milson Park.
- Bike park as a safe place for children to ride, such as the one at [Brightmore Reserve], but on a larger scale.
- Improved bicycle paths through North Sydney, such as extending the one from Cammeray to the Milsons Point entrance onto the Sydney Harbour Bridge to avoid the high traffic, parking, and buses on Miller St/Pacific Hwy/West St.
- Commending Council on the free car restraint checking service, and suggesting that there be more than two per year.

In general, there are 92 references to developing indoor sports facilities and 32 to outdoor sports facilities (some submissions mention more than one sport). The following is the number of mentions:

<b>Sport</b>	<b>Mentions in Submissions</b>
General Indoor Facilities	29
General Outdoor Facilities	16
Basketball	50
Netball	10
Football (soccer)	7
Hockey	5
Badminton	4
Volleyball	1
Softball	1
Tennis	1
<b>Total</b>	<b>124</b>

29 submissions referred to developing indoor sports facilities and 16 to outdoor sports.

In respect of these submissions, the Director of Open Space and Environmental Services advises:

*The 2015 North Sydney Recreational Needs Study also identified the high demand in North Sydney for sport and physical activity, from residents and workers and the student population. The current demand for these facilities outstrips the supply of outdoor playing fields and indoor courts. The 2015 North Sydney Recreational Needs Study identifies a series of strategies for Council to pursue to counter balance the current and future demand and supply issues and as funding and opportunities become available the strategies are being implemented.*

Priority actions proposed are:

1. Continue to make a contribution to affordable child care options (maintain current grants and subsidies program).
  2. Keep children safe through playground audits and maintenance, arborists' reports and tree maintenance; operating Vacation Care through a high quality contractor; and coordination of Family Day Care Educators to meet National Quality Framework targets.
  3. Continue to implement the Strategies in the Recreation Needs Study 2015.
  4. Refurbish North Sydney Olympic Pool and monitor further opportunities to expand existing recreation facilities to meet projected demand.
  5. Work with Kelly's Place Children's Centre's Board to manage impacts arising from the Crows Nest/St Leonards Metro development due for completion in 2024.
  6. Refurbish Cremorne Early Childhood Centre to meet community expectations.
  7. Monitor affordable opportunities to expand Long Day Care Centres' capacity to sustainable numbers.
  8. Revitalise centre-based playgrounds to meet community expectations.
  9. Commission an architectural review of Forsyth Park Community Centre as a potential Before and After School Care site.
-

## Draft North Sydney Council Family and Children's Strategy, 2018-2024 - Summary of submissions received during public exhibition period

### Prepared October 2018

**139 people viewed Engagement HQ and there were 59 responses. There was also one response from Facebook.**

The following criteria was used to determine if changes were needed to the Family and Children's Strategy (F&CS), 2018-2024 based on suggestions in submissions:

1. The Draft Strategy **would be** amended if the submission:
  - a provided additional relevant information,
  - b proposed strategies that would better achieve or assist with Council's objectives,
  - c indicated omissions, inaccuracies or a lack of clarity.
  
2. The Draft Strategy **would not be** amended if the submission:
  - a is already in or supports the Draft Strategy,
  - b addressed issues beyond the scope of the Draft Strategy,
  - c does not propose changes,
  - d is not feasible to include.

As there were many submissions referring to sport and recreation facilities, an additional column appears in the table below with reference to the North Sydney Recreation Needs Study<sup>1</sup>.

No.	Name	Key Points Raised	Response	Recommend the Draft F&CS be Amended Y or N	Reference in Draft F&CS Page Number	Reference in RNS Page Number
1		As noted in the Council Report, long day care options for 0-3 year olds is at a premium. Earlier this week I contacted council day care provider, Kelly's Place at Crows Nest (late September 2018) only to find out the waitlist is	Supports the Draft Strategy's analysis. Agree that long day care options for 0-3 year olds is at a premium and that affordable options for childcare	N	p. 16-20	

<sup>1</sup> See @leisure Planners, North Sydney Recreation Needs Study, North Sydney 2015. The study is herein referred to as RNS.

No.	Name	Key Points Raised	Response	Recommend the Draft F&CS be Amended Y or N	Reference in Draft F&CS Page Number	Reference in RNS Page Number
		approximately 2.5 years long! I'm currently pregnant and looking for affordable options to return to work in approximately 9-12months time and I'm concerned that the number of council supported/provided long day care options for babies and toddlers is not sufficient for the growing needs of residents in the council. Furthermore, the number of long day care services available in the lower part of the council area (Waverton, Milsons Point, Lavender Bay, McMahons Point) is also lacking. In addition to availability, the council should also look at the affordability of these services.	are in great demand. This point is covered in the Draft Strategy.			
		I recently attended the council free car restraint checking service and wanted to commend the council on providing this great service, but am concerned that twice per year is not sufficient and suggest that this be scheduled more regularly and advertised more widely. Thanks for the opportunity to contribute.	Council free car restraint checking service acknowledged as being worthwhile. Consider additional sessions for inclusion in 2019/20 Operating Plan	N	p. 28	
2		Please can Council consider a shade cloth over the existing playground at Milsons Park. You could fry an egg on the slippery dip in summer! Thanks (From Facebook)	The Strategy refers to Council's Recreation Needs Study and highlighted the need to improve and increase the amenity of playgrounds/parks. Refer to Director Open Space	N	p. 22, p.25	p. 35,

No.	Name	Key Points Raised	Response	Recommend the Draft F&CS be Amended Y or N	Reference in Draft F&CS Page Number	Reference in RNS Page Number
			& Environmental Services for further assessment.			
<b>All submissions below mention the need for sporting facilities &amp; some include other references</b>						
3		A lack of indoor sporting facilities in the area has been an issue for 15+ years, this is the fourth time the council has asked for feedback from its community and the fourth time my family has made a submission. The indoor basketball courts at Crows Nest, North Sydney, when finally built, were full every night and every weekend within six months of opening and it remains the same some 10+ years later. It is popular for all ages and a great well-run venue. Indoor stadiums available in comparison with Melbourne, Victoria: NSW has one 6 court stadium at Penrith, Victoria has six, 18+ court stadiums that I know of, possibly more. Victorian Councils regularly upgrade the number of courts to match the number of participants. North Sydney Council does not. I implore the council again to build more basketball facilities and indoor courts. The more courts you build the more children and adults will play. I do not understand your lack of action on this issue. Plenty of good sites have been identified. Lead the way in this	The submission draws a link between increases in school children numbers and resultant demands on recreation services. It calls for indoor sporting facilities including basketball, indoor soccer, netball and badminton. These issues are covered in the Draft Strategy and Council's RNS	N	p. 4-5, p. 11, p. 25	p. 37-43

No.	Name	Key Points Raised	Response	Recommend the Draft F&CS be Amended Y or N	Reference in Draft F&CS Page Number	Reference in RNS Page Number
		<p>development and you will be richly rewarded with immediate success. The fitness and enjoyment of children and adults playing is immense. Right now, and for the last decade, the only way you can play basketball at Norths Indoor Basketball Stadium at Crows Nest or Willoughby Sports Centre is if a team stops playing and there is a vacancy - that applies to competition and to practice and or skills development. People want desperately to play but they cannot because of the lack of venues. Again, I ask what are North Sydney councils short and long-term plans to build more indoor stadiums in the area? Every sport, basketball, indoor soccer, netball, badminton is crying out for more venues.</p>				
		<p>The council area has multiple schools primary and senior schools who face their own barriers, such as lack of facilities and lack of sport opportunities. The North Sydney Council needs to be proactive in its approach to identifying strategic priorities for sport and recreation to provide a blueprint upon which sport and recreation will be nurtured and promoted and committed to undertake a feasibility study for indoor sports facilities. Fundamental goals</p>	<p>Reference to multiple primary and senior schools, current high demand for school places and impact on infrastructure, facilities and resources in the area is accurate. Acknowledges the physical and mental benefits of enjoying sport.</p>	N	p. 4-5, p. 11, p. 25, p. 26-27	p. 25, p. 37-43,

No.	Name	Key Points Raised	Response	Recommend the Draft F&CS be Amended Y or N	Reference in Draft F&CS Page Number	Reference in RNS Page Number
		<p>being the promotion of support for infrastructure and resources, which includes long term infrastructure, facility and resource plans and to obtain a more comprehensive understanding of the lack of current indoor sports facility landscape throughout North Sydney Council. Current and future demand for indoor facilities in North Sydney arises principally from assessing demand. High current demand for school places in the area indicate a younger population and higher rates of sporting participation in the area and population growth with the increase in apartment dwellings suggest there are and will be more trends for increased participation in social and casual sport and fitness related activity which increases demand for indoor facilities. The predicted dire shortage of recreation space is laid bare in The City of Sydney's open space, sports and recreation needs study 2016, which is based on forecasted population growth over the next 15 years. The City of Sydney in 2016 found that by 2031, an additional 20 sports fields, 18 outdoor multi-purpose courts and 19 indoor multi-purpose courts will be needed to meet the growing demand. These reports and the large population growth through development of apartments in</p>	<p>These issues are covered in the Draft Strategy and Council's RNS.</p>			

No.	Name	Key Points Raised	Response	Recommend the Draft F&CS be Amended Y or N	Reference in Draft F&CS Page Number	Reference in RNS Page Number
		<p>North Sydney should alone be an identify for North Sydney Council to build more indoor sporting stadiums. I can think of no better way to increase fitness, reduce obesity, create community friendships than to build more indoor sporting facilities. This is a great opportunity. The only thing that holds North Sydney Basketball Clubs back in terms of members is court space.</p> <p>The general lack of facilities in the area is holding both children and adults back from the great benefits of playing sport and enjoying the physical and mental benefits that this brings. I implore you to build more indoor courts for all sports. We are desperate for more indoor courts.</p>				
4		<p>Dear North Sydney Council, As you review the community facilities, would you kindly consider the following: 1. We need more indoor recreation centres, including basketball and volleyball courts</p>	<p>The submission calls for indoor sporting facilities including basketball and volleyball. These issues are covered in the Draft Strategy and Council's RNS</p>	No	p. 4-5, p. 11, p. 25	p. 37-43


No.	Name	Key Points Raised	Response	Recommend the Draft F&CS be Amended Y or N	Reference in Draft F&CS Page Number	Reference in RNS Page Number
		<p>2. We need improved bicycle paths through North Sydney leading onto the bridge. Specifically, I would like to see the green bicycle lane extended from Cammeray all the way to the Milson's Point bicycle entrance on the bridge via the freeway &amp; North Sydney exit in order to avoid the high traffic, parking, and buses on Miller St/Pacific Hwy/West St through North Sydney. Thank you for your review of my concerns.</p>	<p>Refers to bicycle paths through North Sydney leading onto the bridge.</p> <p>These issues are covered in the Draft Strategy and Council's RNS.</p>	No	p. 4-5, p. 11, p. 25	p. 29-31
5		<p>Why do we continue to build an abundance of apartment buildings and then do nothing to add to the sporting facilities to accommodate the people in this area? There is a high population of children in this area and they need to have the facilities to allow them to stay fit, healthy and active. We are in dire need of more indoor sporting facilities and it needs to be addressed as a matter of urgency. Whilst our child is an avid footballer, he has taken up basketball and was lucky to be able to get a team into the comp. The lack of facilities means that many children miss out. This is not acceptable - isn't community about providing facilities where kids can get together and get involved. Indoor facilities mean that the weather is not attributable to their sports which means the</p>	<p>Refers to development of apartment buildings and need for facilities to stay fit, healthy and active.</p> <p>The submission calls for sporting facilities including basketball and football. These issues are covered in the Draft Strategy and Council's RNS</p>	No	p. 4-5, p. 11, p. 22-23, p. 25	p. 37-43

No.	Name	Key Points Raised	Response	Recommend the Draft F&CS be Amended Y or N	Reference in Draft F&CS Page Number	Reference in RNS Page Number
		kids can get out and do what they love - better for their mental health! What is the plan going forward for the Council to build more stadiums in this area? No more apartments - put one of these indoor stadiums in and you will have your value back two-fold. Kids want to be out doing sports and it is the lack of facilities that hinder this.				
6		Hi - It would be great to see some more indoor basketball stadiums/courts around the area as the facilities we have at Crows Nest are at capacity. - A large bike park would be great. A safe place for kids to ride their bikes, the one at Primrose is great but on the smaller side. - the bike lanes that you seem to be putting everywhere are not really practical given how many families/kids are around the area. Thank you	The submission calls for an indoor basketball facility and refers to developing a large bike park where children could ride their bikes safely. The Learner Cycle Track is at Brightmore Reserve (not Primrose). These issues are covered in the Draft Strategy and Council's RNS	No	p. 4-5, p. 11, p. 25	p. 29-31, p. 37-43
7		North Sydney is in danger due to lack of playground fields and indoor court facilities. Specifically, basketball and other indoor courts are in very short supply. Schools, which have facilities, are CLOSED to the PUBLIC, leaving those in the council suburbs without adequate recreation and sporting facilities. Given the health risks and obesity issues that cost far	Refers to the development of high-rise buildings producing demand for sporting facilities and recreation areas. It specifically mentions basketball and suggests open access to school facilities. These issues are covered in the	N	p. 4-5, p. 11, p. 25, p. 26-27, p. 41	p. 25, p. 37-43,

No.	Name	Key Points Raised	Response	Recommend the Draft F&CS be Amended Y or N	Reference in Draft F&CS Page Number	Reference in RNS Page Number
		more money in the long term, every effort should be made to ensure new recreation and sporting facilities are created. In closing, I find it abhorrent that new high-rise buildings are being built without any green-space or recreation facilities to break up the wall-to-wall concrete and glass. We need green space, we need sporting facilities and recreation areas.	Draft Strategy and Council's RNS. The Draft Strategy has particular reference to continued liaison with the Department of Education and school principals on local issues, and in particular, pressure on public primary schools from numbers of new students.			
8		The Strategy document doesn't appear to address the role council may play in addressing health, wellbeing and recreation facilities in planning and development applications for developments of medium to high density. With more families now choosing to, or having to, live in high density buildings, many of these buildings are particularly family un-friendly - no dirt/community garden, no outdoor recreation facilities (e.g., a half-court basketball area or similar play area), and are on very busy roads and/or intersections that prioritise motor vehicle movement in a dense residential area.	Refers to health, wellbeing and recreation facilities in planning and development applications for developments of medium to high density. Call for the need for recreation options including basketball and community gardens. These issues are covered in the Draft Strategy and Council's RNS	N	p. 4-5, p. 11, p. 25	p. 37-43
9		Hi I note you recently upgraded play equipment in Brennan Park, Waverton. Thanks. Prior to the upgrade, I provided a detailed suggestion (and plans/drawings) for the	Gives positive feedback for upgraded play equipment in Brennan Park, Waverton. Refers to the need for a	N	p. 4-5, p. 11, p. 25, p. 26-27, p. 41	p. 25, p. 37-43

No.	Name	Key Points Raised	Response	Recommend the Draft F&CS be Amended Y or N	Reference in Draft F&CS Page Number	Reference in RNS Page Number
		<p>potential inclusion of a basketball ring and backboard within the Brennan Park upgrade. Specifically, I suggested a quarter court so it didn't take up too much room. The suggestion was knocked back on the basis of noise. Given the train line is adjacent to Brennan Park (which far exceeds any noise from kids playing basketball) ...I didn't understand the argument against...and still don't. Anyway, that's done and dusted...but I still have a real issue with the distinct lack of basketball facilities around Waverton. I note the basketball courts at North Sydney Demonstration school and Cammeraygal High School are closed in after school hours and weekends. This is very frustrating because you've got good courts unable to be used. If you ask most parents, you'll find basketball has grown exponentially over the last few years and the only real basketball facility is at Crows Nest (NSBA)....and that's about to explode at the seams...with the demand from kids and parents within the North Sydney area. I implore North Sydney council to provide additional basketball facilities for our kids!</p>	<p>basketball court in Waverton and to open school facilities to the public. These issues are covered in the Draft Strategy and Council's RNS.</p>			
<p><b>All submissions below <u>only</u> mention the need for sporting facilities</b></p>						

No.	Name	Key Points Raised	Response	Recommend the Draft F&CS be Amended Y or N	Reference in Draft F&CS Page Number	Reference in RNS Page Number
10		<p>I would ask strongly recommend Council consider the inclusion of ACTIVE sporting facilities in any/all future plans for the North Sydney Council area. Sporting facilities for active sports: North Sydney has a range of open parklands and playgrounds to support informal play by children from preschool to young adult BUT what is sorely lacking are facilities for organised activities e.g.; basketball, netball, tennis, softball. There are expected increasing numbers of a families joining our community - the opening of new schools in the area to support the increased population of children is evidence of this. Yet, the emphasis from Council seems to reflect much more mature/sedate use of community areas. Australia is facing an obesity crisis due to children not being involved in active sport and I offer as an example Norths Basketball; who can no longer accept additional teams to the competition due to the lack of available facilities - youth teams are playing as late as 10pm to fit those teams already registered. An additional benefit of organised community youth sport is that it fosters friendships and community relationships between their parents - a win for everyone in the community. So, I</p>	<p>Refers to Council needing to provide sporting facilities to stay fit, healthy and active, specifically mentioning basketball, netball, tennis and softball.</p> <p>These issues are covered in the Draft Strategy and Council's RNS.</p>	N	p. 4-5, p. 11, p. 22-23, p. 25	p. 37-43

No.	Name	Key Points Raised	Response	Recommend the Draft F&CS be Amended Y or N	Reference in Draft F&CS Page Number	Reference in RNS Page Number
		urge you to consider the inclusion of ACTIVE areas in all future plans				
11		<p>Keeping our kids active and healthy and providing facilities to encourage this should be a priority for us all. I applaud Council for its focus on families and children in our local government area. I was very disappointed however that Council has not prioritised indoor stadiums or outdoor basketball facilities in its policy. There are very limited facilities available for basketball players on the lower north shore. Could Council please plan for additional: a) indoor stadiums - which can be used for not only Basketball, but also for Badminton, Futsal and Netball to name a few other sports b) outdoor basketball areas, for example at Primrose Park. The attached photo shows a small outdoor court area at Lane Cove West - it does not take up a lot of room but is a fantastic and well used resource for players.</p>	 <p>Refers to Council needing to provide sporting facilities to stay fit, healthy and active, specifically mentioning badminton, futsal (indoor football) netball and outdoor basketball. These issues are covered in the Draft Strategy and Council's RNS.</p>	N	p. 4-5, p. 11, p. 22-23, p. 25	p. 37-43
12		<p>Hi, I would like to request consideration for more formal indoor and outdoor recreation facilities for our kids. It is impossible to find practice courts for basketball and netball even using local school, private facilities etc. The</p>	<p>Refers to Council needing to provide indoor and outdoor recreation facilities and mentions basketball and netball. It mentions the local</p>	N	p. 4-5, p. 11, p. 25	p. 37-43

No.	Name	Key Points Raised	Response	Recommend the Draft F&CS be Amended Y or N	Reference in Draft F&CS Page Number	Reference in RNS Page Number
		games themselves are held at ridiculously late times for kids, in order to get court time. Given the local public schools are hugely overcrowded leaving no space either, could we please invest in our kids via sports facilities, especially indoor ones? Thanks very much	public schools being overcrowded and drawing on their facilities. These issues are covered in the Draft Strategy and Council's RNS.			
13		Two things: 1) Cammeray artificial football pitch is not sufficient for the needs of local football players. It is completely impossible to book night sessions at the ground, at the time that is only possible for working North Sydneysiders 2) Absolutely no indoor venues for basketball and football. Rooftop is overbooked.	Refers specifically to the Cammeray artificial football pitch being inadequate and for Council to provide indoor sporting facilities for basketball and football. These issues are covered in the Draft Strategy and Council's RNS.	N	p. 4-5, p. 11, p. 25	p. 37-43
14		To build more basketball courts and maintain them.	This is covered in the Draft Strategy and Council's RNS.	N	p. 4-5, p. 11, p. 25	p. 37-43
15		There is a serious lack of indoor sporting facilities in the area. It would be great to see more basketball and netball facilities and indoor courts. What is the council's plan to build more stadiums in the area?	Refers specifically to indoor sporting facilities for basketball and netball. These issues are covered in the Draft Strategy and Council's RNS.	N	p. 4-5, p. 11, p. 25	p. 37-43
16		There is a great need for more indoor sporting facilities for the increase in popularity of basketball. More and more kids are wanting to play club basketball but Norths has to turn	Refers specifically to indoor sporting facilities for basketball. This is covered in	N	p. 4-5, p. 11, p. 25	p. 37-43

No.	Name	Key Points Raised	Response	Recommend the Draft F&CS be Amended Y or N	Reference in Draft F&CS Page Number	Reference in RNS Page Number
		children away as they simply don't have enough courts to keep up with the demand.	the Draft Strategy and Council's RNS.			
17		Need more basketball courts in the area	Refers specifically to basketball. This is covered in the Draft Strategy and Council's RNS.	N	p. 4-5, p. 11, p. 25	p. 37-43
18		It is very frustrating to see and experience the lack of indoor sporting facilities in the area we live in. We have 4 active children ages 7-14 years who all love playing outdoor sport but are severely impacted by the lack of available facilities - most notable being basketball facilities and indoor courts, netball facilities which we understand from Norths Netball are under massive stress and soccer fields in the area. Can you please advise what plans councils has to build more basketball stadiums in the area? Also, what is being done to manage the netball concerns. Netball at Willoughby is the largest club in Australia, yet there are no plans to manage the future for the sport in the area. It is very disappointing.	Refers specifically to indoor sporting facilities for basketball and netball. These issues are covered in the Draft Strategy and Council's RNS.	N	p. 4-5, p. 11, p. 25	p. 37-43
19		I would like to request more indoor multi-sport facilities in the plan to accommodate for the rapidly growing sport and current supply is low. Please review and ensure that the youth facilities include indoor courts including	Refers to indoor sporting facilities and specifically for basketball linked to encouraging youth to be active.	N	p. 4-5, p. 11, p. 25	p. 37-43

No.	Name	Key Points Raised	Response	Recommend the Draft F&CS be Amended Y or N	Reference in Draft F&CS Page Number	Reference in RNS Page Number
		basketball courts to meet demand. Having sufficient indoor facilities to accommodate young people's need for sport exercise also during the longer warmer months will assist in mitigating the risk of obesity and sedentary lifestyle that modern life impose as risk to our youth. Please consider.	These issues are covered in the Draft Strategy and Council's RNS.			
20		There is a need for more indoor sports facilities in the north Sydney area. More basketball courts are necessary for locals to use.	Refers to indoor sporting facilities and specifically for basketball. These issues are covered in the Draft Strategy and Council's RNS.	N	p. 4-5, p. 11, p. 25	p. 37-43
21		North Sydney requires additional indoor and outdoor space for sporting facilities. In particular, the need for additional indoor basketball facilities should be addressed as a matter of urgency. Much has been made of development applications in the past having indoor basketball facilities incorporated into the plans (such as the development at Gore Hill) only to not have the facility materialise. The fact that Northern Suburbs Basketball are unable to match demand for new teams against new competitions is clear evidence that demand exists. I'm sure that Netball, Football and the	Refers to providing indoor and outdoor recreation facilities and mentions basketball, netball and football. These issues are covered in the Draft Strategy and Council's RNS.	N	p. 4-5, p. 11, p. 25	p. 37-43

No.	Name	Key Points Raised	Response	Recommend the Draft F&CS be Amended Y or N	Reference in Draft F&CS Page Number	Reference in RNS Page Number
		myriad of sports in North Sydney share the same frustrations				
22		Hi there, I am a keen basket-baller. When I signed up to play basketball at Crows Nest roof top I had to go on a waiting list until a place became available for a new team. It is frustrating that I had to wait a season or two for a place to play social basketball on a Wednesday night, there are simply not enough courts and overwhelming demand to use them - some of our games have to be played around 23:00. It would be great if there were more indoor basketball facilities in the area. Does the council intend to build any more indoor court facilities in the area?	Refers to indoor sporting facilities and specifically for basketball. These issues are covered in the Draft Strategy and Council's RNS.	N	p. 4-5, p. 11, p. 25	p. 37-43
23		We need more sporting facilities for our kids. Especially basketball. Given our increase in population density. We need the facilities to grow in line with the demand	Refers to sporting facilities and specifically for basketball. These issues are covered in the Draft Strategy and Council's RNS.	N	p. 4-5, p. 11, p. 25	p. 37-43
24		We're very frustrated with the lack of indoor sporting facilities in the area. May we please suggest that council provide more basketball facilities and indoor courts. Does council have any plans to build more stadiums in the area?	Refers to indoor sporting facilities and specifically for basketball. These issues are covered in the Draft Strategy and Council's RNS.	N	p. 4-5, p. 11, p. 25	p. 37-43

No.	Name	Key Points Raised	Response	Recommend the Draft F&CS be Amended Y or N	Reference in Draft F&CS Page Number	Reference in RNS Page Number
25		We need more Indoor basketball stadium. Kids nowadays need to pay indoor sports which is not fair. 1 rugby field can suit 3 basketball court. Basketball can be played by individual or a team.	Refers to indoor sporting facilities and specifically for basketball. These issues are covered in the Draft Strategy and Council's RNS.	N	p. 4-5, p. 11, p. 25	p. 37-43
26		More indoor basketball courts are needed in the area. Local kids teams whose parents pay rates in North Sydney area can't get their children into basketball at North's because there are not enough courts. If you don't address this issue more local kids will drop out of the sport it is very frustrating paying rates in this area and not being able to play in a local competition. One of the industrial buildings in Artarmon would be a good use of space as has parking.	Refers to basketball facilities. This issues are covered in the Draft Strategy and Council's RNS.	N	p. 4-5, p. 11, p. 25	p. 37-43
27		The amount of indoor basketball stadiums in the North Sydney area is greatly insufficient. Such a broadly appealing, accessible and positive team sport will have great benefits to the community both in terms of social and health terms. Investment into building more stadiums/indoor courts is needed and important. What are the plans to do this? (Of course I refer to basketball as the generic term as these indoor courts are clearly far more versatile than that).	Refers to indoor sporting facilities and specifically for basketball. These issues are covered in the Draft Strategy and Council's RNS.	N	p. 4-5, p. 11, p. 25	p. 37-43

No.	Name	Key Points Raised	Response	Recommend the Draft F&CS be Amended Y or N	Reference in Draft F&CS Page Number	Reference in RNS Page Number
28		I am writing to express my frustration of lack of indoor sporting facilities in our area, the basketball courts in Crows Nest and Willoughby are close by but the number of courts are very limit. Sometimes when there are games there, we will have no chance to rent the court. Even the lesson we pay for always forced to called off. Please build more basketball facilities, indoor courts and stadiums in the area	Refers to indoor sporting facilities and specifically for basketball. These issues are covered in the Draft Strategy and Council's RNS.	N	p. 4-5, p. 11, p. 25	p. 37-43
29		I am frustrated with the lack of indoor sporting facilities in the area. I play basketball at Hume St, Crows Nest and have to play games that start at 10pm at night as there is not enough courts for the teams to play. I would like to suggest more basketball facilities and indoor courts. This is particularly important for children at local schools, as they are losing the facilities and grounds for sport due to overwhelming student enrolments at local schools. Are there currently council plans to build more stadiums in the area?	Refers to indoor sporting facilities and specifically for basketball. These issues are covered in the Draft Strategy and Council's RNS.	N	p. 4-5, p. 11, p. 25	p. 37-43
30		I find it very frustrating that there is a lack of good indoor and outdoor sporting facilities in the area. I run a school hockey club for indoor and outdoor hockey and not only is there a lack of school facilities but a lack of good artificial	Refers specifically to indoor sporting facilities for hockey, badminton and basketball.	N	p. 4-5, p. 11, p. 25	p. 37-43

No.	Name	Key Points Raised	Response	Recommend the Draft F&CS be Amended Y or N	Reference in Draft F&CS Page Number	Reference in RNS Page Number
		turf and even worse if floodlighting required. From an indoor perspective there are few sporting facilities where you can hire a badminton court even. Willoughby Leisure centre is booked out with clubs and Hume St has basketball.	These issues are covered in the Draft Strategy and Council's RNS.			
31		It is unbelievable that there is a general lack of readily available basketball facilities for our young kids to develop basketball skills and to compete in competitions here on the Northern Suburbs. Basketball is a great sport for kids to participate in. Some of the benefits is that it encourages physical activity, developing friendships, teaches team building and collaboration, builds community pride, sportsmanship and fair play to name a few. Growing up in the United States, having basketball courts available allowed our community to build support for our children who participated in basketball and gave many would be troubled children an outlet where they could be diverted from devious behaviour. Basketball is a growing sport in Australia and Victoria leads all other states in providing more than adequate indoor facilities and stadiums for children to learn and play. I myself and other are looking to help develop Australian children	Refers to indoor sporting facilities and specifically for basketball. These issues are covered in the Draft Strategy and Council's RNS.	N	p. 4-5, p. 11, p. 25	p. 37-43

No.	Name	Key Points Raised	Response	Recommend the Draft F&CS be Amended Y or N	Reference in Draft F&CS Page Number	Reference in RNS Page Number
		<p>in the skills of basketball and allow them to compete. The only thing lacking is indoor basketball stadiums. With the strong Australian sun, outdoor basketball courts run a risk of children developing skin cancer so building more indoor stadiums would be better. Each stadium should have a minimum of 6 indoor courts. This gives us the space to teach multiple children and also courts to compete as well. I would like to make myself and my party available to sit down with someone to help discuss and work with them to try to make this happen. I am willing to meet any time to and am available to work on this opportunity.</p>				
32		<p>Urgently need more sporting facilities in the area, specifically basketball courts both indoor and outdoor. Basketball is rapidly growing across the north shore and there are no facilities to support this growth. I strongly think the council should be prioritising the matter particularly as obesity is on the rise placing a strange (sic) on health care resources.</p>	<p>Refers to indoor and outdoor sporting facilities and specifically for basketball linked to encouraging youth to be active. These issues are covered in the Draft Strategy and Council's RNS.</p>	N	p. 4-5, p. 11, p. 22-23, p. 25	p. 37-43
33		<p>I am a parent of 5. 3 boys and 2 girls. All my children love and play basketball. I am up at Crows Nest regularly for games. It is so over crowded. We desperately need more courts. So great to see our children enthusiastic to play as</p>	<p>Refers to basketball sporting facilities linked to encouraging youth to be active.</p>	N	p. 4-5, p. 11, p. 22-23, p. 25	p. 37-43

No.	Name	Key Points Raised	Response	Recommend the Draft F&CS be Amended Y or N	Reference in Draft F&CS Page Number	Reference in RNS Page Number
		opposed to stay home gaming on fortnight. Please build more facilities in the area.	These issues are covered in the Draft Strategy and Council's RNS.			
34		Please build more indoor sports centres, more basketball courts, more sporting facilities so that our kids have the same opportunities as kids in outer suburbs doing midweek and weekend sports. Thank you	Refers to indoor and outdoor sporting facilities and specifically for basketball linked to encouraging youth to be active. These issues are covered in the Draft Strategy and Council's RNS.	N	p. 4-5, p. 11, p. 22-23, p. 25	p. 37-43
35		We desperately need more basketball courts. It is so difficult to get time for the kids to play. It is so sad that we often have to turn kids down when they ask to play on a sporting team because we don't have enough facilities. Our community is getting destroyed by the tunnels and metro projects, we need to fight for more resources for our community. Those projects should be kicking in money to help our community recover from the 5-7 years of construction discord and snatching of our land. We need as many courts as possible. We need to encourage as much recreation as possible.	Refers to indoor and outdoor sporting facilities and specifically for basketball linked to encouraging youth to be active. These issues are covered in the Draft Strategy and Council's RNS.	N	p. 4-5, p. 11, p. 25	p. 37-43
36		We need more indoor sports facilities. The Crows Nest Rooftop set-up is too busy and we clearly need more courts in the area, especially	Refers to providing more indoor sporting facilities to	N	p. 4-5, p. 11, p. 25	p. 37-43

No.	Name	Key Points Raised	Response	Recommend the Draft F&CS be Amended Y or N	Reference in Draft F&CS Page Number	Reference in RNS Page Number
		if the plan to knock that down is going ahead. 4 indoor sports courts clearly isn't enough especially seeing as the area is growing rapidly	meet demand for the growth in population. These issues are covered in the Draft Strategy and Council's RNS.			
37		I would like North Sydney Council to consider providing more indoor sports facilities to better service the community. There are hundreds of kids and adults that would love to play sports such as basketball, but the lack of facilities means the demand is far outweighing supply. Sports organisers, such as the Norths Basketball Association, has had to turn away teams of young children who want to play basketball. Much to the disappointment of the kids and organisers. We all know the enormous benefits of kids being active and playing in a team, but more facilities are required to accommodate them. Quality sporting facilities encourage more people to participate and makes them proud of their local area. Please consider providing more indoor sports facilities for the considerable benefits they provide to the community. Many thanks.	Refers to indoor sporting facilities and specifically for basketball linked to encouraging youth to be active. These issues are covered in the Draft Strategy and Council's RNS.	N	p. 4-5, p. 11, p. 22-23, p. 25	p. 37-43
38		I urge the council to consider the building of indoor sport centres with courts and facilities	Refers to indoor sporting facilities and specifically for	N	p. 4-5, p. 11, p. 25	p. 37-43

No.	Name	Key Points Raised	Response	Recommend the Draft F&CS be Amended Y or N	Reference in Draft F&CS Page Number	Reference in RNS Page Number
		for indoor soccer & hockey, netball, basketball, badminton, etc.	hockey, netball, basketball, football and badminton. These issues are covered in the Draft Strategy and Council's RNS.			
39		We are a family with 5 children. 3 boys, 2 girls. All kids have and do play basketball on a weekly basis. The Norths indoor centre is working overtime to keep up with the volume. We have year 9 & 10 kids starting games at 10pm in the evening! Only 4 courts and a parking garage is a serious underuse of the existing location. It would be fantastic to hear about Council plans for a new centre accommodating the needs of the community going forward.	Refers to basketball facilities. This issue is covered in the Draft Strategy and Council's RNS.	N	p. 4-5, p. 11, p. 25	p. 37-43
40		We really need more green space, basketball/netball courts and playing fields	Refers to need more green space, basketball/netball courts and playing fields	N	p. 4-5, p. 11, p. 25,	p. 37-43, p. 44-48
41		Hi, If we are looking to provide sufficient indoor sporting facilities to develop a more active and healthy community, then provision desperately needs to be made to better support indoor hockey. Outdoor field hockey facilities are also very limited in our area. The one indoor court (shared basketball/indoor hockey) at the Marie Bashir Centre in Mosman is not	Refers to indoor sporting facilities including regional facilities and specifically for hockey and basketball. These issues are covered in the Draft Strategy and Council's RNS.	N	p. 4-5, p. 11, p. 25	p. 37-43

No.	Name	Key Points Raised	Response	Recommend the Draft F&CS be Amended Y or N	Reference in Draft F&CS Page Number	Reference in RNS Page Number
		<p>nearly enough for the local community. Many of us have to travel to the Ryde Aquatic Centre to play indoor hockey as a result, which is quite some distance away. There would be much more participation in indoor hockey if there were more local facilities available. I have many children wanting to play indoor hockey in Term 4, but their parents are unwilling to commit because of the travel required (to Ryde), on a week night. As a result, these children are not participating in sport during Term 4. Indoor hockey is a wonderfully inclusive and active sport for both boys and girls. Just look at the facilities being developed and utilised in other nearby regions. Having proper facilities for indoor hockey (even if shared with basketball and other indoor sports) can also be financially rewarding for the local community through support of indoor hockey.</p> <p><a href="https://www.illawarramercury.com.au/story/3308672/indoor-hockey-champs-secured/">https://www.illawarramercury.com.au/story/3308672/indoor-hockey-champs-secured/</a>  <a href="https://www.goulburnpost.com.au/story/3702900/state-hockey-heads-indoors-at-goulburns-veolia-arena/">https://www.goulburnpost.com.au/story/3702900/state-hockey-heads-indoors-at-goulburns-veolia-arena/</a> Here is an example of an indoor hockey game being played at the Marie Bashir Centre in Mosman earlier this year. This is on a court that is also able to be used for basketball, futsal, etc.</p>				

No.	Name	Key Points Raised	Response	Recommend the Draft F&CS be Amended Y or N	Reference in Draft F&CS Page Number	Reference in RNS Page Number
		<p><a href="https://www.youtube.com/watch?v=8HfX_Zw-4g">https://www.youtube.com/watch?v=8HfX_Zw-4g</a> Further information can be obtained about the difficulties supporting indoor hockey in the area, through the Sydney Indoor Hockey Association.</p> <p><a href="http://www.sydneyindoorhockey.com.au/">http://www.sydneyindoorhockey.com.au/</a> Hockey NSW would also be another contact point to discuss the need and benefit of providing adequate indoor hockey facilities for our area. <a href="https://www.hockeynsw.com.au/">https://www.hockeynsw.com.au/</a> I'm sure our local hockey clubs and associations would also have something to say about this situation. <a href="http://www.nsbhockey.com.au">http://www.nsbhockey.com.au</a> North Sydney and Beaches Hockey Association <a href="http://www.mosmanhockey.com.au">http://www.mosmanhockey.com.au</a> Mosman <a href="https://www.gnhockey.asn.au">https://www.gnhockey.asn.au</a></p>				
42		<p>We are desperately short of indoor sporting facilities in our area. It has been obvious for many years we require more basketball facilities and indoor courts. Local competitions are already using every available court in the area including many school facilities and still they cannot accept all of the team nominating for these competitions. We are aiming to get our nation moving yet in our area we lack facilities. Other areas in Sydney have amazing facilities but not in ours. I could not find any</p>	<p>Refers to indoor sporting facilities and specifically for basketball.</p> <p>These issues are covered in the Draft Strategy and Council's RNS.</p>	N	p. 4-5, p. 11, p. 25	p. 37-43

No.	Name	Key Points Raised	Response	Recommend the Draft F&CS be Amended Y or N	Reference in Draft F&CS Page Number	Reference in RNS Page Number
		plans to build more stadiums in the area, only plans to demolish existing ones. Please include new facilities in future building projects.				
43		I would like to ask for more investment in both indoor and outdoor hockey facilities. North Sydney needs double the venues it currently has.	Refers to indoor sporting facilities and specifically for hockey. These issues are covered in the Draft Strategy and Council's RNS.	N	p. 4-5, p. 11, p. 25	p. 37-43
44		1. I would like Council to consider adding additional indoor Basket Ball courts in your strategy and plan. There are far too few facilities within the area. 2. We have two teenage daughters who play Basket Ball for both their school teams and clubs. Current facilities are over booked, and this leads to games scheduled for late evening. Plus, shortened seasons and limited practice sessions. 3. Are the Council planning to build more Basket Ball courts, including multi-sport venues / stadiums?	Refers to indoor sporting facilities and specifically for basketball. These issues are covered in the Draft Strategy and Council's RNS.	N	p. 4-5, p. 11, p. 25	p. 37-43
45		The council require more indoor sports centres for children. More indoor basketball courts and netball courts are required as the current available courts are over-crowded and there are more kids moving in the area.	Refers to indoor sporting facilities and specifically for basketball and netball. These issues are covered in the Draft Strategy and Council's RNS.	N	p. 4-5, p. 11, p. 25	p. 37-43

No.	Name	Key Points Raised	Response	Recommend the Draft F&CS be Amended Y or N	Reference in Draft F&CS Page Number	Reference in RNS Page Number
46		We live adjacent to North Sydney and have 4 girls who attend schools in North Sydney. There is a distinct lack of sporting facilities within the area. More basketball and netball courts and sporting fields are needed as there is a significant shortage for many of the different sporting codes. My girls are involved in basketball, netball, soccer and swimming and we sometimes have to drive up to Mount Colah as there is a shortage of facilities in our local area. Due to the shortage of courts, basketball games are regularly played at 10pm on a Friday night, which is much too late for school kids. In addition, new teams are often turned away as there is no space for them in the competition.	Refers to providing more indoor sporting facilities, particularly basketball and netball, and sporting fields (football) as well as swimming facilities to meet demand for the growth in population. These issues are covered in the Draft Strategy and Council's RNS.	N	p. 4-5, p. 11, p. 25	p. 37-43
47		It is disappointing that my daughter's basketball competition could only get court space at 10:00 pm Friday - quite a late night in Years 10, 11 and 12 AND we are about to lose the courts at Crows Nest. Not good enough and those players (approx. 5,000) will need to be accommodated somewhere else! Where? There is a severe lack of indoor courts on the lower north shore. More needs to be done. This will be exacerbated by the new High School at Crows Nest. NSC needs to be more proactive	Refers to providing more indoor sporting facilities, particularly basketball and draws a link between increases in school children numbers and resultant demands on recreation services. These issues are covered in the Draft Strategy and Council's RNS	N	p. 4-5, p. 11, p. 25	p. 37-43

No.	Name	Key Points Raised	Response	Recommend the Draft F&CS be Amended Y or N	Reference in Draft F&CS Page Number	Reference in RNS Page Number
		in providing increased indoor/basketball facilities.				
48		I would like to express my frustration with the lack of indoor sporting facilities in the area. This is such a great opportunity for teenagers to channel their energy in a healthy direction. It gets them outside and off their screens and helps them release endorphins which assist them cope with stress and depression. The Crows Nest facilities allow kids to interact with others in their own area and means that it's easier for them to get there without needing assistance from parents/drivers. I was really disappointed when I heard that the current basketball courts are being removed as I think it is essential for more safe teenage places to be available in the area especially that encourage healthy lifestyle and fitness. This seems especially important as Cammeraygal has limited sporting area available. Please reconsider your decision and make these facilities available for our community.	Refers to Council needing to provide access to indoor sporting facilities to encourage healthy lifestyle and fitness. These issues are covered in the Draft Strategy and Council's RNS.	N	p. 4-5, p. 11, p. 25	p. 37-43
49		Hi There Just wanted to drop you a note saying that it would be great if there were more basketball courts for kids (and maybe adults) to play in. My 13-year-old was playing for a year at the Crows Nest location and now the teams	Refers to needing more basketball courts. These issues are covered in the Draft Strategy and Council's RNS.	N	p. 4-5, p. 11, p. 25	p. 37-43

No.	Name	Key Points Raised	Response	Recommend the Draft F&CS be Amended Y or N	Reference in Draft F&CS Page Number	Reference in RNS Page Number
		play at Redlands School. All the courts seem to be full all the time. I only started being interested in basketball when my boy started playing but it really seems to be a popular sport and I wonder if the shortage of space is holding kids back.				
50		For the last 15 years, I have organised basketball teams at St Thomas Catholic Primary School in Willoughby on a volunteer basis. St Thomas has approx. 35 teams each year. Almost 2/3 of all the children at St Thomas play basketball. All the teams play for NSBA and use the Norths Sydney Courts. Each year we still can NOT enrol all the St Thomas teams due to lack of courts. For example, three teams could not play this year due to not enough courts being available. Many Parents at Willoughby Public Primary School and Our Lady of Dolours School Catholic in Chatswood have asked me to start the same basketball program at their schools that we have at St Thomas. I honestly would, but because there are no basketball courts in Norths Sydney, I tell them I cannot. NSBA cannot take any more teams. I genuinely believe this is a crime and the Willoughby/ Norths Sydney community need to do something about it. If we started a	Refers to needing more basketball courts. These issues are covered in the Draft Strategy and Council's RNS.	N	p. 4-5, p. 11, p. 25	p. 37-43

No.	Name	Key Points Raised	Response	Recommend the Draft F&CS be Amended Y or N	Reference in Draft F&CS Page Number	Reference in RNS Page Number
		basketball program at Willoughby Public, there would honestly be approx. 75 teams. There is massive interest. Please feel free to call me or ask more questions.				
51		North Sydney needs more indoor basketball courts. The courts that exist are few, and so overcrowded that they are always in use and therefore not maintained well. Indoor sporting facilities are important to keep children active and develop the next generation of athletes.	Refers to indoor sporting facilities and specifically for basketball. These issues are covered in the Draft Strategy and Council's RNS.	N	p. 4-5, p. 11, p. 25	p. 37-43
52		I would like to highlight the issue of limited basketball courts in the North Sydney area. Basketball is such a great sport for maintaining fitness and connections within the local community. The available courts are currently unable to meet the demand of the local club and local residents for indoor (and outdoor) courts. My son, who plays representative level basketball, goes to Ryde and /or to the city to play as he is often unable to get onto the local indoor courts and play in the local competitions. I am especially concerned that there are plans to reduce the number of indoor courts in the area. I would be very interested to hear of plans to build a new stadium and other basketball facilities to maintain accessibility locally. Is there a local strategy for this?	Refers to Council needing to provide access to basketball facilities to encourage healthy lifestyle and fitness. These issues are covered in the Draft Strategy and Council's RNS	N	p. 4-5, p. 11, p. 25	p. 37-43

No.	Name	Key Points Raised	Response	Recommend the Draft F&CS be Amended Y or N	Reference in Draft F&CS Page Number	Reference in RNS Page Number
53		With rising obesity rates we need to encourage children to take up more activities and encourage active participation in sports. The local schools are seeing a rise in the number of children taking up sports such as basketball. There is a lack of indoor sporting facilities in the area - would be great to have more basketball facilities/indoor courts available. Is Council planning to develop more indoor sports facilities and/or other stadiums in the area?	Refers to indoor sporting facilities and specifically for basketball to encourage a healthy lifestyle and overcome obesity. These issues are covered in the Draft Strategy and Council's RNS	N	p. 4-5, p. 11, p. 25	p. 37-43
54		I would like to see the building of more basketball courts in the Nth Shore area. Basketball is a hugely popular sport and the lack of courts is impacting teams being able to complete in local competitions. More local free basketball courts in parks are also required. The current ones are often booked up by schools in the area for sport practice. Basketball is a very social and fun game that encourages kids to get out and get active. It is something fun to do for kids and parents and workers in the Nth Syd CBD at lunch. There are very few places available to facilitate this activity. Larissa	Refers to both indoor and outdoor sporting facilities and specifically for basketball to encourage social interaction and activity. These issues are covered in the Draft Strategy and Council's RNS	N	p. 4-5, p. 11, p. 25	p. 37-43
55		There is a lack of free outdoor basketball courts in the area. The only available facility is North's and they charge a fee and never have available courts for casual use. This needs a	Refers to Council needing to provide outdoor basketball facilities and mentions the need to gain access to local school	N	p. 4-5, p. 11, p. 25	p. 37-43

No.	Name	Key Points Raised	Response	Recommend the Draft F&CS be Amended Y or N	Reference in Draft F&CS Page Number	Reference in RNS Page Number
		serious rework in the area as everywhere is private i.e. Within a school or campus and lacks a sense of community. Other courts in other councils are full and beaming and increase the sense of community. When could this be done?	facilities. These issues are covered in the Draft Strategy and Council's RNS.			
56		We are concerned at the reduction of sporting facilities available to our kids especially indoor basketball courts and outdoor courts as well. we value the ones we have in the village so need to keep these or replace them	Refers to maintaining and increasing both indoor and outdoor basketball facilities. These issues are covered in the Draft Strategy and Council's RNS	N	p. 4-5, p. 11, p. 25	p. 37-43
57		I am frustrated with the lack of indoor stadiums available in and around my area. I would much appreciate the opening of a new indoor facility for me and others to be able to practice and play basketball	Refers to indoor sporting facilities and specifically for basketball. These issues are covered in the Draft Strategy and Council's RNS.	N	p. 4-5, p. 11, p. 25	p. 37-43
58		I play hockey with the Ryde - Hunters Hill hockey club and we have a lot of trouble finding venues to play Indoor hockey in the northern suburbs of Sydney. We play indoor hockey on basketball courts and there is a demand for venues across the northern area but we cannot hire enough. Any move to increase public accessibility to basketball courts would	Refers to indoor sporting facilities specifically for hockey but which could include basketball. These issues are covered in the Draft Strategy and Council's RNS.	N	p. 4-5, p. 11, p. 25	p. 37-43

No.	Name	Key Points Raised	Response	Recommend the Draft F&CS be Amended Y or N	Reference in Draft F&CS Page Number	Reference in RNS Page Number
		benefit many residents and community organisations, beyond the sport of basketball				
59		Lack of indoor basketball options for kids. High demand of current courts makes playing/practicing/games hard to impossible to organize.	Refers to indoor sporting facilities and specifically for basketball. These issues are covered in the Draft Strategy and Council's RNS.	N	p. 4-5, p. 11, p. 25	p. 37-43
60		There's not enough indoor basketball courts around the lower north shore area, it's so inconvenient especially for rainy season. Our kids need more indoor sports facilities to make sure they can get active and fit no matter what the weather is! Please consider to build more indoor basketball courts area this area.	Refers to indoor sporting facilities including regional facilities and specifically for basketball linked to keeping children active and fit. These issues are covered in the Draft Strategy and Council's RNS.	N	p. 4-5, p. 11, p. 25	p. 37-43



# North Sydney Council

## Family and Children's Services Strategy



2018-2024

August 2018

## Family and Children's Services Strategy, 2018-2024

### Contents

Family and Children's Services Strategy, 2018-2024 .....	2
Executive Summary .....	4
Introduction.....	6
The Family and Children's Services Strategy links to Council's Community Strategic Plan 2018-2028 (CSP) .....	7
A note on definition of Families and Children .....	7
Snapshot of North Sydney .....	8
Our residents .....	8
The workforce.....	8
Ages of Children in the North Sydney LGA .....	9
North Sydney Population and Housing Characteristics.....	9
Family Changes in North Sydney 2011 to 2016.....	9
Recent Trends and Expected Demand .....	11
The Research, Engagement and Consultation Process .....	12
Results of the Quick Survey Engagement Process .....	12
Key Family and Children's Issues Identified in the North Sydney LGA .....	15
Childcare.....	16
Council's current role in Childcare.....	16
Overview.....	16
Childcare Supply and Demand in North Sydney.....	17
Survey of Children's services based in the North Sydney LGA .....	19
Childcare Affordability.....	19
Before and After School Care Services (BASC) .....	20
Vacation Care.....	21
Health and Wellbeing .....	22
Council's current role in Health and Wellbeing .....	22
Comments: .....	22
Overview.....	22
Early Childhood Health Centre (ECHC) Services.....	23
Australian Early Development Census .....	24
Mental Health.....	24
Recreation and Leisure .....	25

Education .....	26
Council's current role in Education .....	26
Overview .....	26
Child and Family Safety .....	28
Council's current role in Child and Family Safety .....	28
Overview .....	28
Family and domestic violence .....	28
Child protection .....	29
Crime detection and prevention .....	30
Road and pedestrian safety .....	31
Community Connectedness, Inclusion and Family Support.....	31
Council's current role in Community Connectedness, Inclusion and Family Supports .....	32
Overview .....	33
Family Support Services .....	33
Families Affected by Alcohol and Other Drugs .....	33
Early intervention for children with disabilities .....	34
Families and children from culturally and linguistically diverse communities .....	35
Cultural Activities and Information .....	35
Community Information .....	35
Housing .....	35
Council's current role in Affordable Housing .....	36
Affordable Housing .....	36
Current and proposed strategies: North Sydney Council Family and Children's Strategy, 2018-2024.....	38

## Executive Summary

For this Strategy Council undertook research and engaged with its community. It is a response to the growing number of families and children and the existing and forecast development taking place in the Local Government Area (LGA) and surrounds. The intention of the strategy is to identify actions that enhance belonging and wellbeing for families and children and allow their aspirations to be met. North Sydney is acknowledged as a great place to live, work, be educated and visit; and is developing as a place to shop. Council's Community Strategic Plan (CSP) aims to make our LGA *inclusive, healthy and safe*.

In 2016, the resident population was 72,037, an increase of 5,290 people, or 7.9% in five years. The forecast population for 2036 is 84,422. State Government Policies are a major factor in this growth, as well as the attractiveness of the area for young adults seeking inner city accommodation close to employment, services, facilities, education and entertainment. North Sydney is increasingly providing medium and high density housing. Families are more prepared to live in apartments to take advantage of proximity to schools, work, services, facilities, parks, recreation spaces, transport and amenities.

Between 2011 and 2016, the number of households in North Sydney with children increased by 1,352. The main family trends within this are:

- Parents and homebuilders, aged 35 to 49, increased by 1,630
- Couples with children under 15 years increased by 1,090
- An additional 492 children aged 0-4 years
- An additional 895 children aged 5-11 years

These population characteristics fed into the key issues, identified as

- Childcare
- Health and wellbeing
- Education
- Child and family safety
- Community connectedness, inclusion and family support
- Housing

In summary there will be increased demand for childcare, particularly for children aged under the age of two, early childhood health centre services, services for children with a disability, primary school places, Out of School Hours services, information and support for new parents on parenting and networks to assist them, including parents from culturally and linguistically diverse backgrounds.

82% of people surveyed did not consider current childcare options to be affordable.

The three highest priority issues for families and children were school and education, parks, reserves and sporting facilities and lastly crime and personal safety.

There will be increasing pressure on the recreational and leisure facilities that families currently use heavily, including parks, playgrounds, playgroups, swimming and water facilities, bushland, picnic areas and sports facilities.

While North Sydney families value the parks, reserves, sports facilities and open spaces, access to the Harbour and the range of playgrounds, it is generally felt that there are insufficient play spaces for organized sport.

Local families and children are generally satisfied with the range of health services and cultural activities, both within the North Sydney LGA and sub-regionally.

The North Sydney LGA is serviced by 11 public and private primary schools. Play space and space for Before and After School care is constrained. While school fees are generally high, more affordable educational opportunities are increasing with a State High School being built and a foreshadowed increase in co-educational Catholic Systemic School opportunities.

Council's Stanton Library has an important role in educational support and engagement with children and families, from the infant stage through to the various developmental stages of preschool, primary and high school.

Housing will need to be flexible to cater to the changing economic and demographic trends.

Families and children have access to a range of health services, two Early Childhood Health Centres, the Mater Private Hospital, the Royal North Shore Hospital, the nearby Greenwich Hospital, the Community Health Centre in St Leonards, Blue Knot Foundation in Cremorne and Relationships Australia at Neutral Bay. Northern Sydney Local Health District (NSLHD) has identified obesity as a significant childhood issue. There are suburbs of the LGA such as Milsons Point and Kirribilli without a general practitioner.

From 2009 to 2015 there was an overall increase in the percentages of children with developmental risks and vulnerabilities as measured by the Australian Early Development Census (AEDC). Examples include children with disabilities and those with language delays and who have had limited exposure to English at home coming from a culturally and linguistically diverse family; and vulnerability to mental illness, as 13% of North Sydney residents report mental and behavioural issues, slightly higher than the NSW average of 12.6%. Bullying, including cyberbullying is rapidly increasing with research showing that one in five young Australians, aged 8 to 17 years, experience cyberbullying each year.

A range of services are involved in responding to domestic violence including police, Women's Domestic Violence Court Advocacy Service (WDVCAS), family support services, refuges, shelters and other housing agencies, health and legal services, Centrelink, counsellors, and community groups. A local women's refuge opened its doors in North Sydney for the first time in November 2016, funded primarily from voluntary and philanthropic sources.

Children represent 11.5% of all pedestrian injuries and 14.3% of passenger injuries in the North Sydney LGA.

Council is already engaged in addressing many of these issues. New and emerging challenges are also identified, arising from research and the community's feedback. Council is the key driver of many of the strategies and needs to work in partnership with all community stakeholders to implement the adopted recommendations.

Priority actions identified are:

1. Continue to make a contribution to affordable child care options (maintain current grants and subsidies program).
2. Keep children safe through playground audits and maintenance, arborists' reports and tree maintenance; operating Vacation Care through a high quality contractor; and co-ordination of Family Day Care Educators to meet National Quality Framework targets.
3. Continue to implement the Strategies in the Recreation Needs Study 2015.
4. Refurbish North Sydney Olympic Pool and monitor further opportunities to expand existing recreation facilities to meet projected demand.
5. Work with Kelly's Place Children's' Centre's Board to manage to manage impacts arising from the Crows Nest/St Leonards Metro development due for completion in 2024.
6. Refurbish Cremorne Early Childhood Centre to meet community expectations.
7. Monitor affordable opportunities to expand Long Day Care Centres' capacity to sustainable numbers.
8. Revitalize centre-based playgrounds to meet community expectations.
9. Commission an architectural review of Forsyth Park Community Centre as a potential Before and After School Care site

## Introduction

The *Family and Children's Strategy, 2018-2024* is based on research and community engagement. Arising from this, the following issues have been identified as important in North Sydney:

- Childcare
- Health and wellbeing
- Education
- Child and family safety
- Community connectedness, inclusion and family support
- Housing

## The Family and Children's Services Strategy links to Council's Community Strategic Plan 2018-2028 (CSP)

Council's CSP sets out a number of strategies as part of developing Social Vitality. The most pertinent for this Strategy are to:

- Provide services, facilities and information to meet the needs of North Sydney's diverse communities (including children, young people, older people, residents and workers)
- Improve access to early childhood care facilities
- Plan for future social infrastructure and health services to support healthy communities
- Promote physical activity, healthy eating and preventative health care
- Improve the safety of North Sydney's public environment

## A note on definition of Families and Children

The Convention on the Rights of the Child notes that the family is "the fundamental group of society and the natural environment for the growth and well-being of all its members and particularly children<sup>1</sup>". In this Strategy children are defined as aged 0 to 12 years. Interested readers are also referred to Council's *Youth Work Action Strategic Plan 2016-2021* which sets out Council's key commitments to young people aged 12 to 24<sup>2</sup>.

---

<sup>1</sup> See *Convention on the Rights of the Child*, <http://www.ohchr.org/Documents/ProfessionalInterest/crc.pdf>

<sup>2</sup> *Youth Work in North Sydney: an action plan for development and early intervention. 2016 – 2021*, North Sydney 2016 See

[www.northsydney.nsw.gov.au/Council\\_Meetings/Policies\\_Plans/Plans\\_of\\_Management/Social\\_amp\\_Cultural\\_Plans](http://www.northsydney.nsw.gov.au/Council_Meetings/Policies_Plans/Plans_of_Management/Social_amp_Cultural_Plans)

## Snapshot of North Sydney

The North Sydney Local Government Area is located on the northern side of Sydney Harbour, three kilometers north of the Sydney CBD to which it is linked by the Harbour Tunnel and the Sydney Harbour Bridge. Its harbourside border winds through 20 kilometres in length marking tranquil bays, sheltered parks, the Olympic Pool and bushland at Balls Head. Its land border is 7.7 kilometres long and is shared with three other Council areas. North Sydney is bisected by the Warringah Freeway and also traversed, north to south, by the Pacific Highway.

The Central Business District is in North Sydney, with an increasingly high rise, largely residential, precinct at Crows Nest/St Leonards. Low rise residential areas are prominent, and suburbs are marked by village centres. North Sydney's parks support organized sport and passive recreation and are provided with well-maintained children's playgrounds and a skate facility. Major community facilities include North Sydney Oval, North Sydney Olympic Pool, Stanton Library and Community Centres at North Sydney, Kirribilli and Crows Nest.

North Sydney is well served by public transport, with three heavy rail stations, all accessible, two metro stations under construction, buses, ferries and Council's community transport program for those who need it.



Photo credit: Images 4 Business

Characteristic	2016	2011
Population	72,037	66,747
Land area	1,049 hectares (10sq km)	1,049 hectares (10sq km)
Population density <sup>3</sup>	64.50 persons per hectare	59.38 persons per hectare

Table 1: Key Statistics, Census 2016

### Our residents

The resident population increased by 5,290 people, or 7.9%.

Females outnumber males.



52.8% female



47.2% male

### The workforce

48,769 residents were in the workforce, of whom 25% work in North Sydney. The total North Sydney workforce is 72,245, including the resident workers.

<sup>3</sup> Sydney Greater Metropolitan Area has an average density of 3.9 PPH while Sydney CBD has a PPH of 76.83.

## Ages of Children in the North Sydney LGA

Age - years	Males	Females	Persons
0	500	455	957
1	426	413	837
2	380	359	740
3	341	303	653
4	306	356	664
Total 0-4 years	1,960	1,886	3,846
5	289	277	568
6	258	301	560
7	284	279	563
8	264	252	520
9	232	247	481
10	232	250	484
11	180	198	381
12	182	180	361
Total 5-12 years	1,921	1,984	3,918

Table 2: Age structure: children in North Sydney, Census 2016

## North Sydney Population and Housing Characteristics

The proximity to rail transport and other services, as well as the addition of large numbers of new dwellings, particularly in Crows Nest/St Leonards and North Sydney will continue to contribute to the rental stock (apartments) which is attractive to young professionals, new parents, homebuilders and people seeking to live independently on their own.

North Sydney is increasingly embracing medium and high density housing.

- The total number of households in North Sydney Council area increased by 1,494 between 2011 and 2016
- 89.2% of the dwellings are medium or high density, compared to 44% in Greater Sydney.
- Between 2011 and 2016, the number of households with children increased by 1,352
- Of all the Local Government Areas in Australia, North Sydney ranks 9th at 11.4%, in terms of the highest concentrations of children living in apartments.
- There is also proportionally a higher number of lone person households (32.4%) and group households (6.1%) - significantly higher than the Greater Sydney averages (20.4% and 4.5% respectively).
- 43% of households were purchasing or fully owned their home, 47.4% were renting (mostly privately) and 1.6% were in social housing in 2016.

## Family Changes in North Sydney 2011 to 2016

Census categories may with advantage to analysis be broken into 'service age groups'. For families, these move from babies and pre-schoolers to parents and homebuilders, which correspond with predictable issues which arise such as the need for childcare services and schooling:

North Sydney Council	2016		2011		Change
Service age group (years)	Number	%	Number	%	2011 to 2016
Babies & pre-schoolers (0 to 4)	3,846	5.7	3,354	5.4	+492
Primary schoolers (5 to 11)	3,562	5.3	2,667	4.3	+895
Secondary schoolers (12 to 17)	2,269	3.4	1,932	3.1	+337
Tertiary education & independence (18 to 24)	4,156	6.1	4,322	6.9	-166
Young workforce (25 to 34)	16,352	24.2	16,569	26.6	-217
Parents & homebuilders (35 to 49)	16,767	24.8	15,137	24.3	+1,630

Table 3: Service age group from babies and pre-schoolers to parents and homebuilders

When North Sydney LGA is compared to Greater Sydney, the higher proportions of the young workforce (25 to 34 years) and parents and homebuilders (35 to 49 years) is noticeable.

### Age structure - service age groups, 2016

Total persons

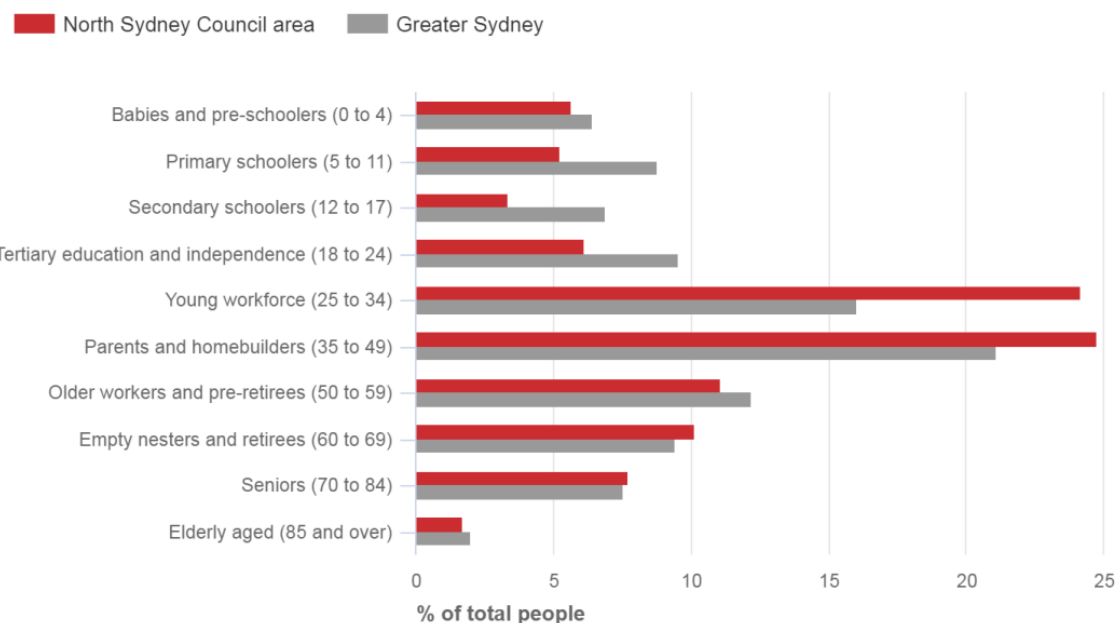


Chart 1: Service age groups in North Sydney LGA compared to Greater Sydney, 2016

Each year North Sydney mothers give birth<sup>4</sup> to around 1,000 babies; the most of the four Lower North Shore LGAs.

North Sydney LGA	2015	2014	2013	2012	2011	TOTAL
Births each year	1,070	1,063	1,011	1,028	1,057	5,229

Table 4: Total births in North Sydney LGA - 2011-2015

<sup>4</sup> Information on birth and age of mothers is from NSW Health Data. 2015 figures are the latest available. See [http://www.healthstats.nsw.gov.au/Indicatorgroup/indicatorViewList?code=mum+mab&topic=topic\\_mab&name=Mothers%20and%20babiesTopic](http://www.healthstats.nsw.gov.au/Indicatorgroup/indicatorViewList?code=mum+mab&topic=topic_mab&name=Mothers%20and%20babiesTopic)

The 30-39-year age range is the predominant child bearing age for mothers from the North Sydney LGA<sup>5</sup>.

Age Range in Years	Proportion
19 & under	0.1%
Aged 20-24	1.0%
Aged 25-29	11.7%
Aged 30-34	44.0%
Aged 35-39	33.9%
Aged 40-44	8.0%
Aged 45 & over	1.1%
Total	100%

*Table 5: Age of Mothers giving birth in 2015: North Sydney Aged Range in years*

The typical new parent in North Sydney is likely to be part of a couple who are starting families with the mother above 30 years of age. They have delayed parenthood in order to study, establish careers or businesses, provide stability around accommodation and pursue life aspirations.

## Recent Trends and Expected Demand

Emerging key issues to address and expected demand are for:

- Early Childhood Health Centre (ECHC) services – who provide consultation/ counselling and home visiting to ensure that mothers and babies are thriving in the home, are vaccinated, and health related issues are addressed. For mothers this can cover post-natal depression, infections, pregnancy induced diabetes or high blood pressure; and for babies, this can cover premature birth, breast-feeding, bonding and low body-weight. Developmental stages also need to be monitored to ensure that children are on a typical growth and development trajectory.
- Diagnostic and assessment service for children born with a disability or young children born with global developmental delays such as an autism spectrum disorder.
- Childcare for children under the age of 6 and not yet at school,
- Primary School places to cater for growing families and those who move into the area,
- Complementary services of Before and After School Care (BASC) and Vacation Care,
- Information and support for new parents on parenting and networks to assist them in developing skills and supports, parents from culturally and linguistically diverse backgrounds, parents with a child with a disability and families who have unexpected crises,
- Housing options which allow for flexible arrangements to accommodate the changing economic and demographic trends of the diverse community of North Sydney, including less affluent residents and ‘key workers’.
- Recreational and leisure facilities that families can access including parks, playgrounds, playgroups, swimming and water facilities, bushland, picnic areas, sports facilities, etc.

<sup>5</sup> Source: NSW Health CaSPA FlowInfo 17 (accessed July, 2018).

## The Research, Engagement and Consultation Process

Council's Community Engagement included surveys, a stakeholder workshop held in February 2018, meetings with several playgroup sessions, and at Community Centres and Stanton Library, feedback at information sessions, face-to-face contact with stakeholders, (e.g. interviews, site meetings/ visits), posting information on social media (Facebook/Twitter), emailing information to networks for feedback and publishing a Fact Sheet as a discussion starter. From November 2017 to April 2018 a 'Quick Survey' was completed by 218 people and gave a snapshot of the issues. Twelve participants, drawn from the general public and service providers, joined a focus group. Three submissions were received online and 21 childcare service provider surveys were completed.

### Results of the Quick Survey Engagement Process

The six key questions of the Quick Survey give an interesting snapshot of what is important in relation to families and children. People were asked to rate three priority issues and the chart below shows that school and education is the primary concern, parks, reserves and sporting facilities was next and third, crime and personal safety.

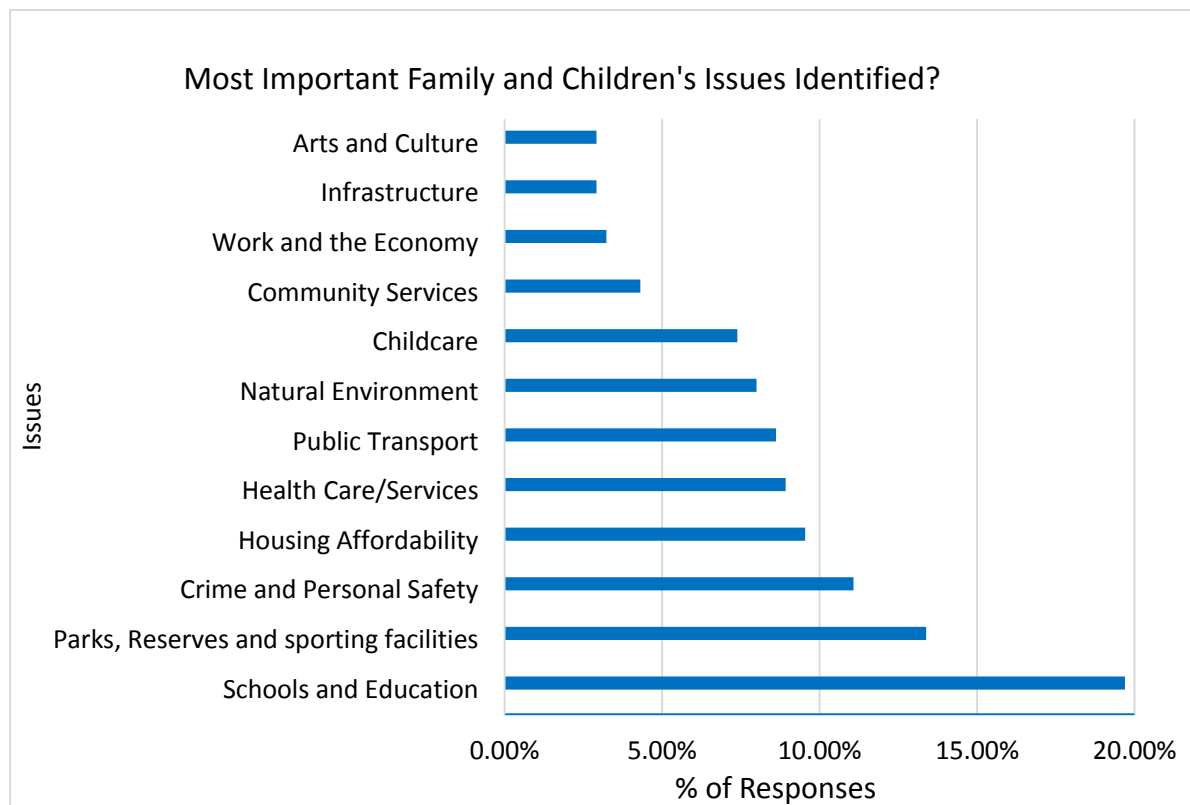


Chart 2: Most Important Family and Children's Issues Identified by the Quick Survey

Other issues, from housing affordability to childcare, were also considered important.

The second question:

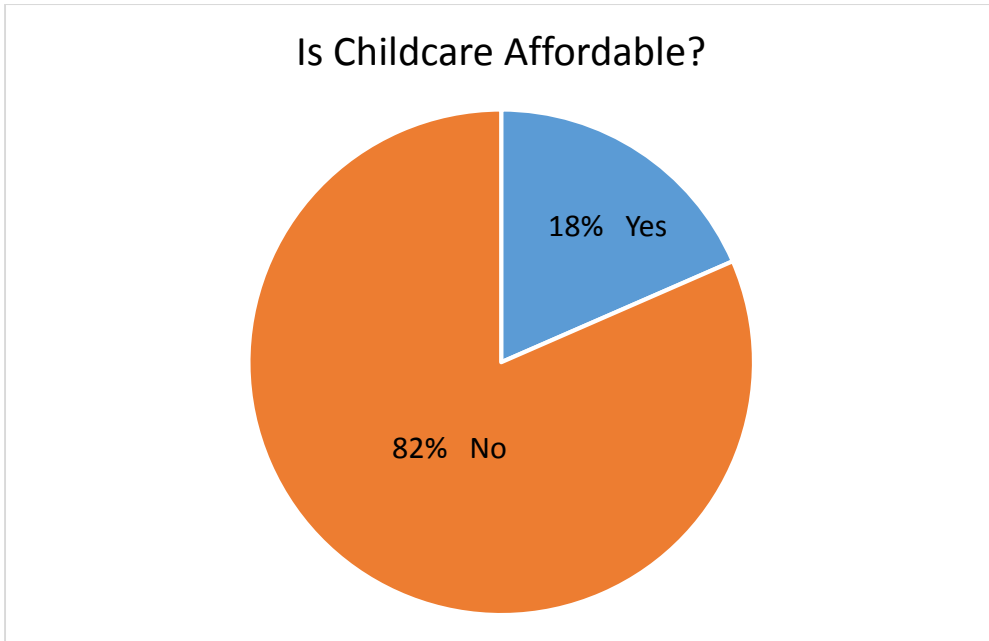


Chart 3 “Do you think that childcare services are affordable at present?”

Question 3

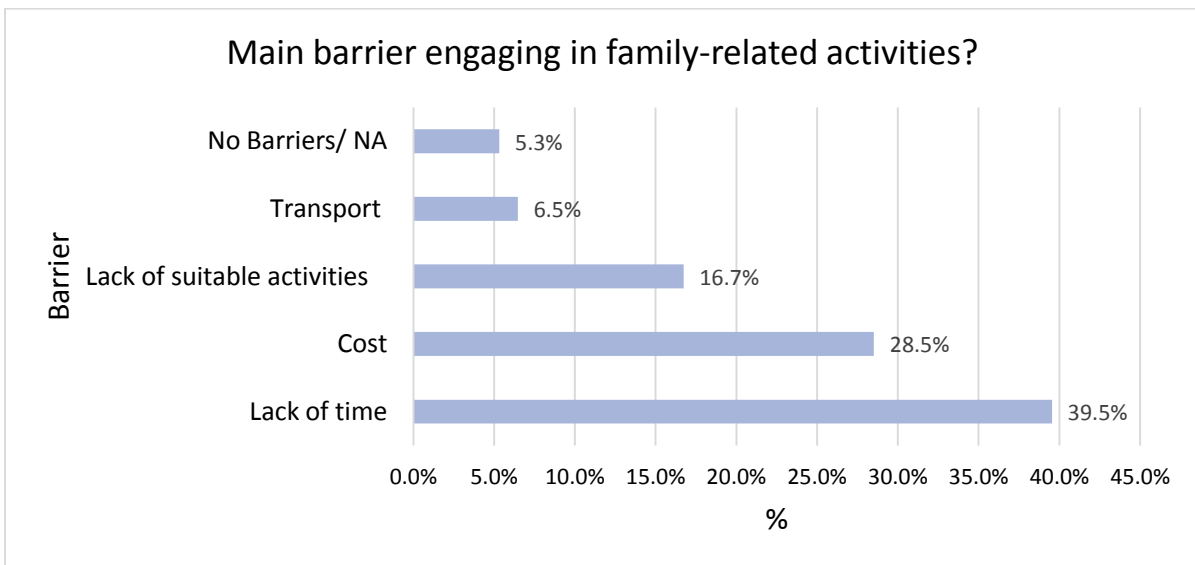


Chart 4 What is your main barrier (if any) in engaging in family-related activities?”

“In this modern world, time is short so you can only do a few things. A lot ends up costing too much with activities, food, transport. It’s hard”.

Question 4:

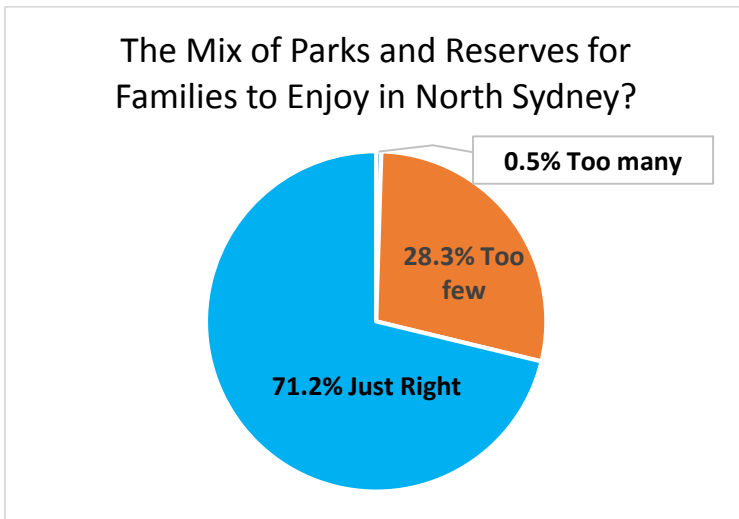


Chart 5: “What do you think of the mix of parks and reserves for families to enjoy in North Sydney?”

Question 5.

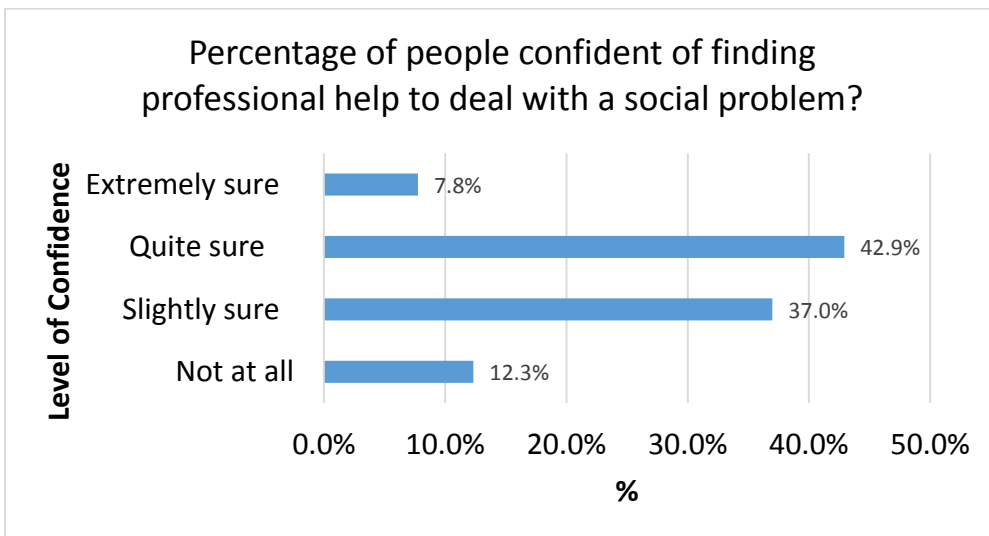


Chart 6: “How confident are you that if you had a pressing social problem, that you could find professional help to deal with it?”

Just over 50% of people were confident about finding assistance.

The Quick Survey asked how people would rate the standard of, and access to, local health services. Only 6% of people considered it unsatisfactory.

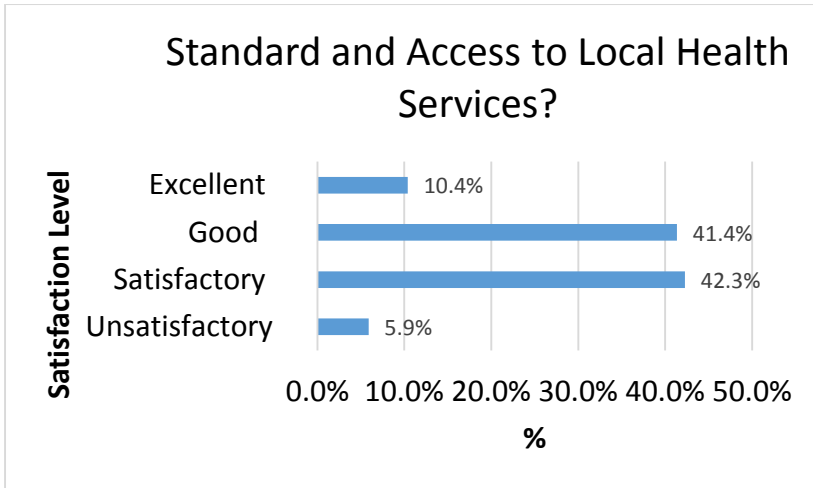


Chart 7 “How would you rate the standard and access to local health services?”

### Key Family and Children’s Issues Identified in the North Sydney LGA

The research and engagement process allowed Council to identify six key issues.

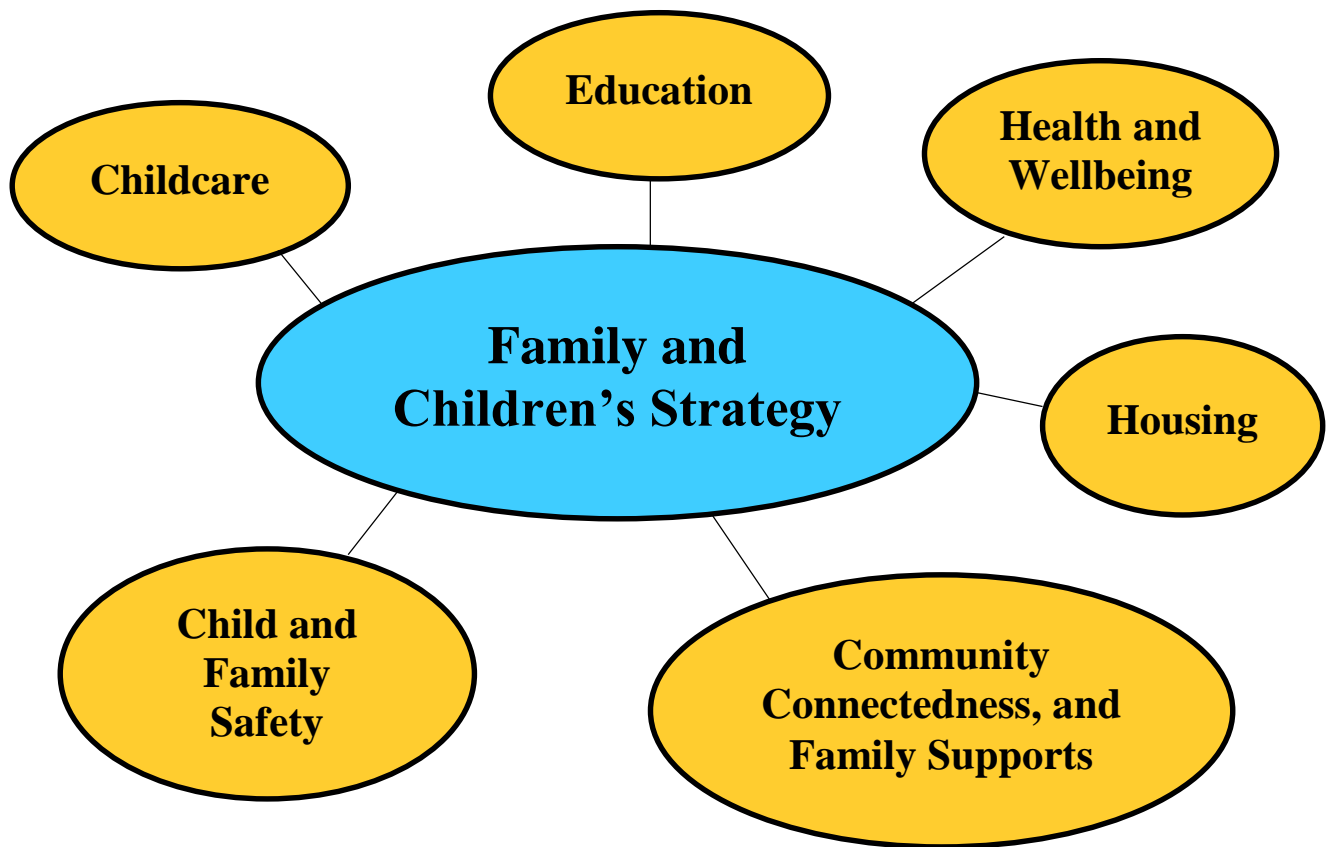


Chart 8: Key Family and Children’s Issues Identified in the North Sydney LGA

## Childcare

### Council's current role in Childcare

#### Currently Council:

- Auspices the North Sydney Family Day Care Scheme with over 30 educators providing affordable childcare in their homes.
- Provides childcare facilities for community organisations to run preschools, long day care and occasional care. For example, the Greenwood Long Day Care Centre, Montessori Preschool, Kelly's Place Children's Centre, Kids Nest Occasional Care, McMahons Point Community Preschool and Early Learning Centre, KU Grandstand Kids Care, KU Cammeray Preschools and Cammeray Child Care Centre run from Council owned buildings.
- Supports Before and After School Care (BASC) services such as those run at North Sydney Community Centre for 5-12 year olds.
- Subsidises a crèche at North Sydney Olympic Pool.
- Funds Vacation Care services run during school holiday periods from three Council centres.
- Provides other Vacation Care Activities for children during school holidays including through Stanton Library and the Bushcare Team.

#### Comment:

1. Council's Kelly's Place Children's Centre is in an ageing building but a fine playground and is located adjacent to the South portal of the Crows Nest St Leonards Metro due to completion in 2024.
2. Greenwood Long Day Care Centre is in good standard accommodation but has an ageing playground. It has a low capacity (28 places).
3. McMahons Point Community Preschool also has a low capacity (28 places), and an ageing building, but with a new playground due to be completed in 2018.
4. An opportunity to improve the Crèche facilities at the Pool presents itself in the upcoming refurbishment of the whole Pool.

### Overview

Type	Description
Long Day Care <sup>6</sup> (LDC)	A LDC centre generally operates long hours usually between 8 and 12 hours per day primarily to provide support to families who work or study. There are 32 LDC services in North Sydney.
Pre-schools <sup>7</sup> (PS)	PS services are centre-based facilities catering to children aged 3-5 years generally in the year or two prior to attending formal school. Their operational hours have been historically 6-7 hours a day and are consistent with the public school term dates and hours. However, some PS are now known as "extended hours" PS and operate throughout the year similar to LDC with the option of education and care for up to five days a week. There are 7 PS services in North Sydney.

<sup>6</sup> For a map of their location, see [www.mychild.gov.au](http://www.mychild.gov.au)

<sup>7</sup> For a map of their location, see [www.mychild.gov.au](http://www.mychild.gov.au)

Family Day Care <sup>8</sup> (FDC)	FDC is care provided in the family day care educator's own home for small groups of children from birth to under 12 years of age. The main operator of FDC in North Sydney is North Sydney Council, administering the service since 1974 and responsible for approving, supporting, training and advising over 30 educators. North Sydney also has educators who operate under the auspices of other parent organisations.
Occasional Care (OC)	OC is provided at a centre for short periods of time for children under school age. They are generally used for a range of reasons so carers can attend appointments, work part-time, meet study commitments, have respite from full-time parenting or they may wish their child to have social experiences. Operational hours and fees vary. North Sydney has one dedicated Occasional Child Care Centre, KidsNest, in Crows Nest which charges an hourly fee.
Out of School Hours (OOSH) and Before and After School Care (BASC)	OOSH is centre-based education and care services for primary school aged children outside of normal school hours. The purpose "is to extend and enrich the wellbeing and development of school aged children through opportunities to engage in leisure and play-based experiences, while meeting the care requirements of families <sup>9</sup> ". These services are generally broken into three types: <ul style="list-style-type: none"> <li>• <i>Before School Care (BSC)</i> – generally operate between 7am-9am during Department of Education (DE) school terms</li> <li>• <i>After School Care (ASC)</i> – generally operate between 3.00pm-6.00pm during DE school terms</li> <li>• <i>Vacation Care (VC)</i> – usually operate during DE school holidays between 8am-6pm.</li> </ul>

Table 6: Types of Childcare

Another significant source of childcare is "informal" care<sup>10</sup>. Active grandparents can play a significant childcare role while their adult children are working. It means that parents save on childcare fees at the same time that the grandparents enhance their relationship with their grandchildren.

### Childcare Supply and Demand in North Sydney

The Labour force participation rate in North Sydney is 71.3% compared to 61.6% for Greater Sydney, having flow on effects for child care.

From Council's review of Children's Services in 2014<sup>11</sup> and Children's Education & Care Services Forum in 2015<sup>12</sup>, together with the research undertaken as part of the Family and Children's Strategy, it can be noted that:

<sup>8</sup> For a map of the location of educators & their auspices, see: <https://www.familydaycare.com.au/findchildcare>

<sup>9</sup> <http://networkofcommunityactivities.org.au/> See Establishing an Outside School Hours Care (OSHC) Service in NSW

<sup>10</sup> The ABS defines informal care as "Non-regulated care either in the child's home or elsewhere. It includes paid or unpaid care by: (step) brothers or sisters, grandparents, other relatives (including a non-resident parent), other (unrelated) people such as friends, neighbours, nannies or babysitters and other organisations (e.g. crèche at gyms and health centres)". See 4402.0 - *Childhood Education and Care*, Australia, June 2014

<sup>11</sup> North Sydney Council *Children's Services Review 2014*, North Sydney, 2014

<sup>12</sup> *Children's Education Care Services Forum Report*, Prepared for North Sydney Council by SNC – Social Needs Consulting, February 2016

- There is a large concentration of work-related LDC services in Central Business Districts (CBD's) of North Sydney LGA with a high proportion of places being taken up by children of parents residing outside but working inside the LGA.
- There is undersupply of Long Day Care (LDC) for children under 2 years old, but an oversupply for those aged 3-5 years with some services recording vacancies.
- Some services approved to provide care for children under 2 years old, do not fill their numbers as the high cost of care for this age group is prohibitive<sup>13</sup>.
- There is an undersupply of affordable LDC services for local residents which is also borne out by the quick survey where 82% of people surveyed do not think that childcare services are affordable at present.
- A growing number of young couples prefer to remain in units and apartments. Reasons include parents choosing to live closer to their place of work and supports, public transport issues and long, expensive commutes to and from the outer suburbs of Sydney, and parents from culturally diverse backgrounds are accustomed to apartment living.
- Demand for childcare will continue in the short-term as both the supply of apartment stock and commercial floor space leading to employment ear-marked in the North Sydney CBD and the St Leonards and Crows Nest area come on board<sup>14</sup>.
- Those who need care rely on both formal (approved children's services) and informal care (care from grandparents, relatives, friends, etc.) which spreads costs and also means that not all full-time working parents require 5-day care<sup>15</sup>.

Extensive private and not for profit childcare opportunities are available to North Sydney parents. Council's role also includes assessment of Development Applications for childcare centres and must consider all relevant planning issues including, noise traffic and parking impacts on neighbours. Centres must comply with the National Quality Framework (NQF) and are rated, not by Council, against quality practices within childcare. The Australian Children's Education and Care Quality Authority (ACECQA) is the national body that works with the state and territories to implement the NQF and the NSW Department of Education (DET) regulates the centres for compliance to standards. There have been a growing amount of regulations and compliance standards placed on local services. Any review of Council's Childcare Development Control Plan would take these into consideration.

Management models		
Private for profit	21	49%
Private not-for-profit	19	44%
School (including preschool)	2	5%
Council Managed (FDC)	1	2%
Total	43	100%

Table 7: Management of Services for Children aged 0-6 years - North Sydney LGA<sup>16</sup>

<sup>13</sup> See Children's Services Review, p. 8-9.

<sup>14</sup> See NSW Department of Planning and Environment, St Leonards and Crows Nest Station Social Infrastructure and Open Space Study: Background Review, Arup Pty Ltd, Sydney, February 2017, p. 1.

<sup>15</sup> See Australian Bureau of Statistics, 4402.0 – Childhood Education and Care Australia, June 2014

<sup>16</sup> Source: ACECQA (Australian Children's Education & Care Quality Authority), National Quality Framework (NQF) Snapshots Childcare Services North Sydney as at 31 December 2017, See [www.acecqa.gov.au/nqf/snapshots](http://www.acecqa.gov.au/nqf/snapshots)

The Australian Childcare Alliance (ACA) NSW, the peak body for privately-owned early childhood education and care services in New South Wales reports that some centres are struggling to fill childcare vacancies, while others have a waiting list. ACA suggests that across the Lower North Shore there is an undersupply of places in North Sydney and Mosman while there is an oversupply in Lane Cove and Willoughby<sup>17</sup>.

### Survey of Children's services based in the North Sydney LGA

Of the 21 children's services surveyed (49% of services returned surveys):

- 57% (12 services) had vacancies which varied from as small as 4-5 per week to up to 80;
- Of the 43% of services with a waitlist, for LDC services, all except one which catered to the 0-6 years' age range, reported highest demand in the under 2 year olds,
- For pre-school services with a waitlist, the factors that appeared to be significant and attractive to parents were cost (i.e. reasonable and lower than the average fees) and the smaller number of children taken by the centre.

Type of Care	Fees - Up to 24 months	Fees - 2 years - 36 months	Fees - 3 - 6 years
Long Day Care	\$192 - \$122	\$176 - \$122	\$152 - \$ 115.30
Family Day Care <sup>18</sup>	\$85 - \$140.00	\$85 - \$140.00	\$85 - \$140.00
Occasional Care	\$13 per hour	\$13 per hour	\$13 per hour
Preschools	NA	NA	\$41.00 - \$ 115.00

Table 8: Rates of childcare fees for the different types of care in North Sydney

### Childcare Affordability

Between 2002 and 2014 working parents spent an increasing share of income on childcare for children not yet at school. In most years, approximately 80% of households reported experiencing difficulties. North Sydney and Mosman were rated as two of the least affordable areas for childcare in Australia<sup>19</sup>.

“Day-care in the North Sydney area can be over \$200 per child per day! The day-care I currently use is \$175 per child per day. After the government rebate I'm still over \$33,000 out of pocket and that's with after tax money. How can this be justified?”

<sup>17</sup> Australian Childcare Alliance (ACA) NSW, Draft State Environmental Planning Policy (SEPP) (Educational Establishments and Childcare Facilities) 2017 can create more childcare oversupply, Submission to NSW Planning, Sydney, April 2017, see <https://nsw.childcarealliance.org.au/images/Documents/Submissions/2017-04-07 - ACA NSW submission to NSW Planning re Draft SEPP.pdf>

<sup>18</sup> The majority of the FDC Educators in North Sydney are overseen by North Sydney Council and these services have fees starting at \$85. However, other FDC providers also operate in the North Sydney area, as management is not restricted by geographic location.

<sup>19</sup> Phillips, Ben, *Child Care: Affordability in Australia*, Income and Wealth Report Issue 35, National Centre for Social and Economic Modelling, University of Canberra, June 2014: p. 19

The Federal Government provides eligible families help with approved and registered childcare service fees. From 2 July 2018, Child Care Subsidy (CCS) and Additional Child Care Subsidy (ACCS) replaced the existing childcare payments offered. Parents currently receiving childcare fee assistance for approved childcare will need to have completed a Child Care Subsidy assessment online to access entitlements. The annual cap has changed. The level of Child Care Subsidy will be determined by a family's income, an activity test and the type of childcare service<sup>20</sup>. It is not clear if this change will assist affordability for parents. Its merit has been promoted as making things simpler with all payments handled at the one point. North Sydney parents with too high a combined income will be ineligible for subsidy.

Council's contribution to affordability includes rental and cash subsidies to parent-run and not-for-profit centres in Council buildings. These subsidies are declared in Council's Annual Subsidies and Grants report and placed on public exhibition each year alongside the Council Estimates for the following year. The program of subsidies and grants covers all categories of childcare: Family Day Care, Vacation Care, Long Day Care, Preschool, Occasional Care, Playgroups and a crèche. Council's ability to contribute in this way is limited by the supply of Council facilities and other demands on the subsidies and grants budget.

#### Before and After School Care Services (BASC)

With continued growth in the child population and local primary schools catering to increasing numbers, there is a flow-on effect for BASC places connected to the schools and some are experiencing a critical shortage. The State Government commissioned Deloitte Access Economics in 2017 who identified the North Sydney LGA as one of the ten Sydney metropolitan "hotspots" where demand significantly out-stripped supply. Officers of the Department of Education met with School Principals and Council representatives to consider ways to better meet the demand.

Current school enrolments for 2018 stand at 3,343 children. This is an increase from 2,849 in 2016 of 494 children, or about 17%.

Public Schools	Provider	2018 School Numbers	Current Children in BASC	Children on Waiting list
North Sydney Demonstration School	KU Demcare Kids Care (At School)	870	102 in ASC 60 in BSC	Nil
	KU Bay Road Kids Care (2 <sup>nd</sup> Campus at School)		35 in ASC No BSC	
	KU Grandstand Kids Care (Off Campus)		40 in ASC No BSC	
	North Sydney Community Centre (Off Campus)		105 in ASC No BSC	

<sup>20</sup> See [www.education.gov.au/ChildCarePackage](http://www.education.gov.au/ChildCarePackage) for more information about subsidy rates and the annual cap.

ANZAC Park School	Jigsaw	569	198 in ASC 130 in BSC	30
Neutral Bay Public School	Neutral Bay Creative Activities Group	970	200 in ASC 100 in BSC	200
Cammeray Public School	The Nanyima Centre	934	170 in ASC 60 in BSC	70
<b>TOTAL</b>		<b>3343</b>	<b>850 (ASC) 350 (BSC)</b>	<b>300</b>

Table 9: Children in Public Primary Schools and BASCs and Waiting Lists<sup>21</sup>

Comments:

1. Schools have generally reached space capacity for classrooms and do not have on-site options to increase BASC place.
2. In some cases, the original Development Application has imposed conditions that limit any increase in places due to noise and traffic considerations.
3. A lack of off-site options for children to go to a BASC service. BASC service buildings need to suitably comply with the legislative requirements and regulations. In some cases, BASC services have reached their approved capacity.
4. Two of Council's buildings (Grandstand Kindergarten and North Sydney Community Centre) host after school care. Only Forsyth Park Community Centre has been identified in the remainder of the community properties portfolio as having the potential to make a contribution to BASC. A solution has not been found, however, for Cameragal Montessori's reasonable requirement, as the current tenant, to not to have to pack up on a daily basis.

It is generally agreed for reasons of safety and convenience for parents, among other factors, that the best place for BASC is the school the children attend. Despite this, on the basis that ANZAC Park Public School will greatly expand in numbers in coming years Council has recommended to the Department of Education that more BASC places be provided for the ANZAC school BASC overflow on the new school campus for Cammeraygal High in West Street, due to open by 2020.

### Vacation Care

Council's Centre based Vacation Care provides opportunities for children to engage in a range of arts, sports, science, maths and literacy programs. Excursions include sports, bowling, movies, bushwalking and stage shows. Fees are considered affordable and are comparable with other Lower North Shore Council operated vacation Care programs. Gowrie NSW will begin operating Council's 3-centre based program from August 2018.

A number of private providers also offer vacation care services such as camping, music and soccer activities. The North Sydney PCYC runs activities from its facilities.

<sup>21</sup> Figures derived from phone calls to schools and BASC providers on 23/03/18 and 26/03/18.

## Health and Wellbeing

### Council's current role in Health and Wellbeing

#### Currently Council:

- Participates in a joint venture with NSW Health through its early childhood centre facilities at Crows Nest and Cremorne, where NSW Health-employed nurses provide health services for babies and children, advice to parents on child development and parenting, new mother's groups, screening and referral, diet assistance and counselling.
- Supports Tresillian Guthrie Long Day Care Centre at Wollstonecraft, in association with Tresillian's own range of parenting programs for families with children from birth to 12 months.
- Maintains and upgrades over 30 parks with playgrounds, ranging from traditional swing-sets and climbing equipment to sophisticated custom-designed playgrounds as well as an extensive range of ovals, reserves and bushland areas.
- Supports Relationships Australia and Blue Knot Foundation in Neutral Bay and Lifeline in Kirribilli.

#### Comments:

1. In 2017 Council completed a fit-for purpose adaption of Level 4 of the Crows Nest Centre as the principal Early Childhood Centre for North Sydney (4 nurses). The Cremorne premises are jointly owned with Mosman Council and it is agreed that they are below standard. A refurbishment program began in 2018.

#### Overview

World Health Organization (WHO): "Health is a state of complete physical, mental and social well-being and not merely the absence of disease or infirmity<sup>22</sup>". Families and children in North Sydney have access to a range of health services, in addition to Council supported ones, such as the Royal North Shore Hospital, the Mater Hospital, the nearby Greenwich Hospital, and the Community Health Centre in St Leonards. Identifying a child's wellbeing allows services to monitor child development over the years before they start school. Establishing healthy lifestyles which includes a good diet, sleep, meaningful mental and physical activity and preventing and reducing rates of obesity promote well-being.

Council no longer provides immunisation services. A risk management review in 2016 concluded that NSW Health is better placed than Council to employ nurses and support general practitioners to supply this service.

North Sydney is part of the Northern Sydney Local Health District (NSLHD). The NSLHD has adopted a Strategic Plan 2017-2022 which includes child and family health issues as also identified in the NSW State Plan. Obesity was identified as a significant childhood issue for 17.1% of the NSLHD (compared to the NSW average of 21.9%). Obesity is addressed through such NSW Health programs as the Munch and Move programme which targets children's services to increase children's healthy eating and physical activity and limit small screen recreation, Live Life Well @ School which aims to increase physical activity and healthy eating among primary school children and Go4Fun which aims to increase physical activity and

---

<sup>22</sup> Constitution of WHO, see [www.who.int/about/mission/en/](http://www.who.int/about/mission/en/)

healthy eating among children aged 7 – 13 years who are above a healthy weight. The Health services reported in 2016-17, that it had 111,000 children participating in healthy eating and active living programs.

### Early Childhood Health Centre (EHC) Services

Council provides accommodation for Early Childhood Health Centres (EHCs) in Crows Nest and in partnership with Mosman Council in Cremorne<sup>23</sup>. Now known as *Child and Family Health Centres*, this service is also in partnership with NSW Health who employ the nurses. It is a free community-based service for parents and care-givers offering a one-to-one session (either drop-in or appointment) and home visiting. EHC's provide support, information and group programs on parenting issues for 0-5 years through individual clinic appointments, group programmes and information sessions. This includes support groups for new parents, toddler issues, age specific information and treatment groups for parents experiencing post-natal depression. Universal Health Home Visits to families are made for a new baby to assess how the baby and family are developing and coping in their own environment.

Centre	Universal Health Home Visits -babies	Other Assessments - babies & children	Group Attendances - mothers/parents
Cremorne C&FHC	726	2,636	3,850
Crows Nest C&FHC	801	2,559	3,850
Total	1,527	5,195	7,700

Table 10: Cremorne and Crows Nest Child & Family Health Centres - 2017

North Sydney Council refurbished level 4 of the Crows Nest Centre in 2017 to NSW Health specifications, increasing the capacity of the EHC by one nurse to four. Cremorne's premises have been acknowledged as also needing refurbishment as commented by a parent through the engagement process:

“Our local early childhood centre at Cremorne is really run down, very old and shabby and needs to be rebuilt”.

While North Sydney and Mosman Councils are currently making improvements to the Centre it is unlikely to be completely rebuilt in the short term.

The physical and psychological changes experienced in becoming a parent can also affect mood and feelings leading to perinatal depression. Depression may also return in a following pregnancy or after the birth of another child<sup>24</sup>. Local services Tresillian Family Care Centre in Wollstonecraft and the Gidget Foundation in North Sydney offer support. Up to one in seven women (almost 16 per cent) experience postnatal depression, which develops between one

<sup>23</sup> See <http://www.nslhd.health.nsw.gov.au/Services/Directory/Pages/Early-Childhood-Health-Centre-Cremorne.aspx>, <http://www.nslhd.health.nsw.gov.au/Services/Directory/Pages/Early-Childhood-Health-Centre-Crows-Nest.aspx>

<sup>24</sup> Perinatal depression covers the whole period from conception until a baby is 12 months old. See <https://healthyfamilies.beyondblue.org.au/pregnancy-and-new-parents/maternal-mental-health-and-wellbeing/depression>

month and up to one year after the birth<sup>25</sup>. In recognition that clinical care of a more intensive nature may be needed, Tresillian and the Gidget Foundation are currently looking to expand their services in North Sydney.

## Australian Early Development Census

The Australian Early Development Census<sup>26</sup> (AEDC) is an Australian Government initiative which shows how young children develop as they start their first year of school. The early environments and experiences children are exposed to shape their development. The AEDC is considered to be a measure of how well children and families are supported from conception through to school age. In North Sydney from 2009 to 2015 there was an overall increase in the percentages of children with developmental risks and vulnerabilities and the most significant increases identified were the percentage of children demonstrating underdeveloped emotional maturity between 2009 and 2015. Social competence and language and cognitive skills were quite high, particularly compared to the NSW percentages. Parents, family workers, health professionals and early childhood educators can become better partners in monitoring and promoting children's development and targeting services. Vulnerable categories are children with disabilities and those who have language delays due to limited exposure to English at home.

## Mental Health

Of all children in Australia, 23.3% have a parent with a non-substance mental illness; 20.4% of mental health service users have dependent children and 14.4% have at least one parent with a mental illness<sup>27</sup>. Parents with a mental health issue are also over-represented in Children and Young People (CYP) Concern Reports, with 13% of reports including a parent with a mental illness<sup>28</sup>. Children of a parent with a mental illness are at risk of "emotional, behavioural and intellectual difficulties, as well as developmental delays, school achievements problems, deficits in social functioning, and later drug and alcohol abuse. They are at greater risk for mental illness themselves, both as children and adolescents, and later in life. However, the risks are minimised when these children learn the facts about mental illness and when they receive the emotional support and understanding of a mental health professional"<sup>29</sup>.

13% of North Sydney residents report mental and behavioural issues, slightly higher than the NSW average of 12.6% and the highest of any LGA across northern Sydney<sup>30</sup>. Bullying, including cyberbullying is rapidly increasing with research showing that one in five young

<sup>25</sup> Tresillian [Annual Report 2017](#), Sydney. See

[www.tresillian.org.au/media/1525/1651\\_tresillian\\_ar2017\\_v12.pdf](http://www.tresillian.org.au/media/1525/1651_tresillian_ar2017_v12.pdf) Information also provided by discussions with Tresillian Nurse on 14/05/18

<sup>26</sup> AEDC Community Profile 2015 – 1: About the Australian Early Development Census. See

[www.aedc.gov.au/data/data-explorer?id=62073](http://www.aedc.gov.au/data/data-explorer?id=62073) Accessed on 14/05/18

<sup>27</sup> Maybery, Darryl & Andrea E. Reupert, "Prevalence of parental mental illness in Australian families" in *Psychiatric Bulletin*, Volume 33, Issue 1, January 2009, pp. 22-26

<sup>28</sup> NSW Department of Family and Community Services, [Parent with Mental Health Issues: consequences for children and effectiveness of interventions designed to assist children and their families](#), FACS, Sydney, November 2008

<sup>29</sup> <http://www.integricare.org.au/documents/fact-sheets>, [Parent Mental Illness and Children](#)

<sup>30</sup> Sydney North Health Network (SNHN), Needs Assessment 2016/2017, Sydney, 2017, p. 49. See: <http://sydneynorthhealthnetwork.org.au/wp-content/uploads/2016/07/SNHN-Needs-Assessment-Report-2016.pdf>

Australians aged 8 to 17 years experience cyberbullying each year. The lasting effects of cyberbullying lead to low self-esteem, mental health issues, depression and anxiety<sup>31</sup>. Presentations for self-harm makes up 32% of mental health related presentations. The Child and Youth Mental Health Service attached to St Leonard's Community Health Centre works with children aged 0-17 years (18 if still at school) with severe and complex mental health problems. There is support available too from a Children of Parents with a Mental Illness (COPMI) consultant who can support children and families where a parent experiences a mental illness. While the Northern Sydney area is well serviced with mental health facilities in comparison to other areas, these services are well utilised and need to be maintained.

## Recreation and Leisure

The families of North Sydney value the parks, reserves and open spaces and access to the harbour and the range of playgrounds. Practically all residents live within 400m of some public open space. Council's Recreation Needs Study<sup>32</sup> from 2015 outlines a comprehensive strategy relating to recreational and leisure facilities. What families said in that document about parks as a place for social and family recreation (e.g. by using play facilities, picnicking, kicking a ball, etc.) is supported by feedback received as part of the Families and Children's Strategy engagement process. While there is a good range of recreation facilities in the North Sydney area, maintaining an adequate supply in view of future demand is an ongoing challenge<sup>33</sup>. Family and children's outdoor spaces should "be accessible, intergenerational spaces, with physical and social opportunities as well as natural elements<sup>34</sup>". Comments highlighted that the improvements needed include an increase of playgrounds/parks in the Crows Nest area and an upgrade to Civic Park. In terms of new facilities to cater for families, a water play park, a park with equipment for teenagers and a park which has shaded soft-fall and equipment for babies. Council has a continuous program of improvements and upgrades to its parks, playgrounds and recreation facilities, most recently, Kesterton Park.

---

<sup>31</sup> Katz, I., Keeley, M., Spears, B., Taddeo, C., Swirski, T., & Bates, S (2014). Research on youth exposure to, and management of, cyberbullying incidents in Australia: Synthesis report (SPRC Report 16/2014). Sydney: Social Policy Research Centre, UNSW Australia.

<sup>32</sup> See @leisure Planners, North Sydney Recreation Needs Study, North Sydney 2015.

<sup>33</sup> Ibid, p. 3

<sup>34</sup> Ibid, p. 35

## Education

### Council's current role in Education

Currently Council:

- Liaises with school principals on local issues and produces an Educational Institutions Working Group Bulletin.
- Supports programmes which facilitate children's access to the sustainability events including the Coal Loader.
- Oversees the Green School Grant Program to support pre-schools, childcare centres, primary and high schools in North Sydney to develop, implement, review and celebrate school-based environmental projects which has led to the installation of garden and rain water tanks at schools, biodiversity trails and incorporating sustainability modules into the curriculum.
- Incorporates within Stanton Library a Children's and Young Adult Library section with children's resources, including events and a wide collection of e-resources, books, CDs, DVDs and audio books available for loan. Offers, through Stanton Library, study spaces seven days a week, educational and social learning activities to children, including preschool story time, a program for reading development for pre-schoolers which includes stories, music, songs and rhymes, holiday activities, Children's Book Week, the Young Writers Award, Summer Reading Club and meet the author events. Mothers, fathers, grandparents, sisters, brothers, carers all participate with the children.
- Provides an extensive Local Studies program including walks, talks and tours for school children.
- Offers local schools the opportunity to learn more about their local Council by participating in its Mock Council Programme and mentoring opportunities.

### Overview

North Sydney LGA is serviced with a range of public and private school providers: 11 institutions providing infant and primary school care, of which four are public schools:

Public Schools	2018 School Numbers
North Sydney Demonstration School	870
ANZAC Park School	569
Neutral Bay Public School	970
Cammeray Public School	934
<b>TOTAL</b>	<b>3,343</b>

*Table 11: Public Primary Schools in the North Sydney LGA 2018*

North Sydney's newest primary school, Anzac Park Public School opened in 2016. Student numbers grew from 75 in 2016 to 569 in 2018. A survey of the seven private schools in 2015 showed that of the 2,055 students enrolled, 1,406 were from outside the LGA, which represents 68% of total attendees. Non local students attending schools ranged from 5% at Cammeray Public School to 89% at St Aloysius.

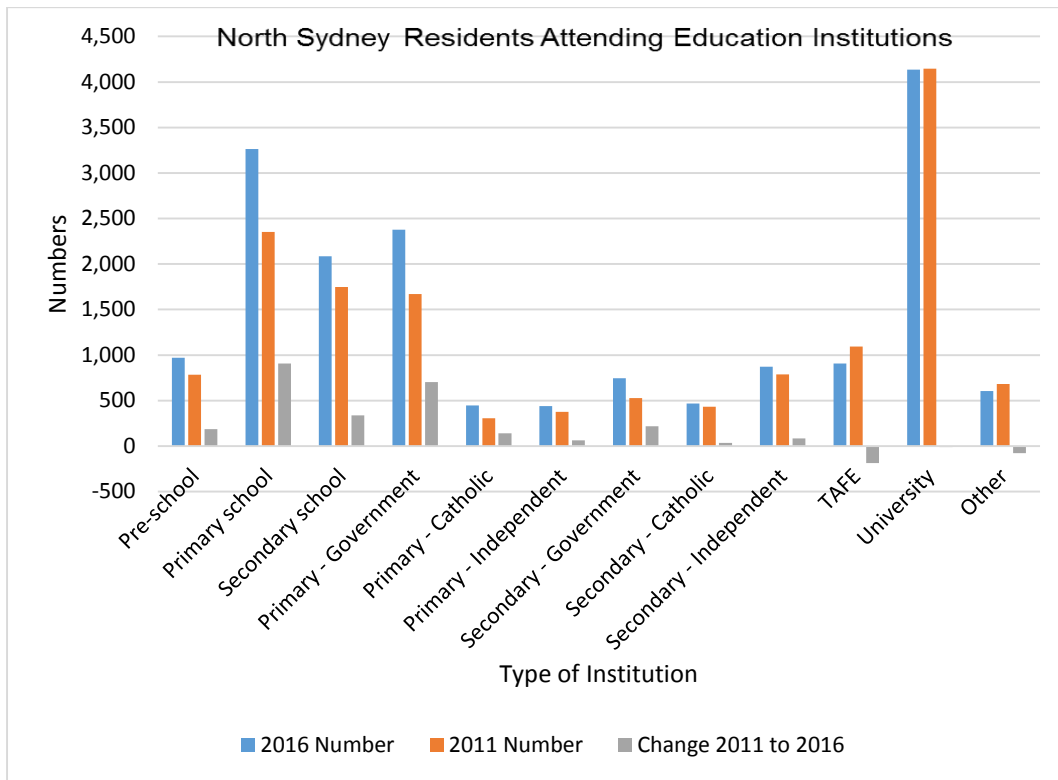


Chart 9: Changes in Numbers of North Sydney residents attending educational institutions between 2016 and 2011 ABS Census Periods

## Child and Family Safety

### Council's current role in Child and Family Safety

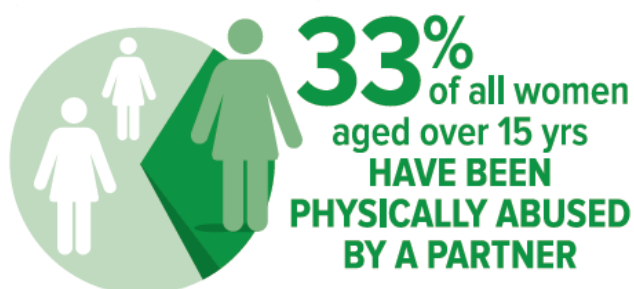
Currently Council:

- Plays an active role in Lower North Shore Domestic Violence (DV) Network, contributing to the Network's projects and events.
- Supports a local women's refuge through the annual Subsidies and Grants program.
- Works with other North Shore Councils (Lane Cove, Kur-ring-gai, Hornsby, Ryde, Willoughby and Northern Beaches) to conduct Road Safety Campaigns.
- Provides free child restraint checking days twice a year so that parents and carers of babies and young children can receive advice and be assured that their child restraint for their cars are fitted professionally and meet Australian Standards.
- Conducts a variety of Road Safety Campaigns to promote better road safety liaising with schools and children's services to increase parent and child awareness.
- Contributes to year round care opportunities for local children through crèche, occasional care, long day care, Family Day Care and vacation care.
- Conducts quarterly safety audits of playgrounds in parks and Council-owned centres.

### Overview

The Australian Government released the findings of the *Royal Commission into Institutional Responses to Child Sexual Abuse*<sup>35</sup> in December 2017, documenting systemic failures in child protection. The NSW Government, through its State Plan, aims to:

- reduce domestic violence, with the proportion of domestic violence perpetrators who re-offend to be reduced by 25 per cent by 2019.
- improve protection of children by decreasing the percentage of children and young people re-reported of being at risk of significant harm by 15 per cent by 2019<sup>36</sup>.



### Family and domestic violence

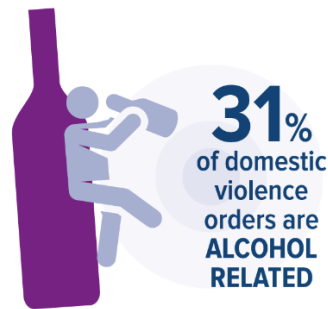
Family and domestic violence and domestic abuse are behaviours that occur in a family or close personal relationship which are violent, threatening, coercive or controlling, and causes a victim to live in fear<sup>37</sup>. Domestic and family violence is the principal cause of homelessness for women and their children. In Australia, one in four children are exposed to domestic

<sup>35</sup> <https://www.childabuseroyalcommission.gov.au/final-report>

<sup>36</sup> NSW Health, *Annual Report 2016-17*, North Sydney, 2017, p. 13. See <http://www.health.nsw.gov.au/annualreport/Publications/annual-report-2017.pdf>

<sup>37</sup> See <http://www.northshoredomesticviolence.org.au> the website of the LNS DV Network.

violence. A woman killed by her partner, is most likely to be killed in her home<sup>38</sup>.



Women in greatest need require immediate crisis accommodation to escape domestic violence. On any one night in Australia it has been estimated that at least one in every two women who approach agencies to receive immediate accommodation are turned away<sup>39</sup>. A range of services are involved in responding to domestic violence including police, Women's Domestic Violence Court Advocacy Service family support services, refuges, shelters and other housing agencies, health and legal services, Centrelink, counsellors, and community groups.

Until recently there was no local women's refuge in North Sydney, the nearest being at Lane Cove. In November 2016 Mary's House opened, a local independently-operated, non-Government refuge, staffed by a full-time refuge manager and part-time caseworkers. The refuge provides accommodation for five women and their children (up to 19 in total) at one time and also accommodates single women. The refuge is an initiative of the North Shore Women's Benevolent Association ("NSWBA") a non-denominational, not-for-profit organisation.

Council recently adopted a staff Domestic Violence Policy whereby Council is supportive of staff experiencing and escaping domestic violence. It includes provisions whereby staff can access counselling services and be accommodated when they require time off for medical, legal, counselling appointments and for court appearances.



## Child protection

The NSW Family and Community Services (FACS) Department is charged to help, protect, keep safe and care for children and young people at risk or who are unable to live with their families. They are "committed to the safety and wellbeing of children and young people and

<sup>38</sup> Mary's House, *Annual Report 2017*, North Sydney, 2018, p. 2.

<sup>39</sup> Mary's House Information Booklet, Flinders Institute for Housing, Urban and Regional Research, *Women, Domestic and Family Violence and Homelessness: A Synthesis Report*, Adelaide, 2008. See [www.dss.gov.au/our-responsibilities/women/publications-articles/reducing-violence/women-domestic-and-family-violence-and-homelessness-a-synthesis-report?HTML#4j](http://www.dss.gov.au/our-responsibilities/women/publications-articles/reducing-violence/women-domestic-and-family-violence-and-homelessness-a-synthesis-report?HTML#4j)

protecting them from risk of harm, abuse and neglect<sup>40</sup>. Children and young people have a right to be safe at home and in the community, and live without violence and abuse. A child or young person (CYP) concern report is a report to FACS where there is a suspected risk requiring assessment. The rate of CYP concern reports to Helplines from 2011 to 2015 for North Sydney is shown in the table below.

Area	2011-12	2012-13	2013-24	2014-15
North Sydney LGA	15	15	21	20
NSW	58	60	63	64

Table 12: North Sydney LGA - Rate of CYP concern reports per 1,000 compared to NSW from 2011-12 to 2014-15<sup>41</sup>

The rate of CYP concern reports per 1,000 in North Sydney remained constant from 2011 to 2013, at approximately one quarter of the rate of reports seen across NSW, but jumped from 2014 to 2015 to approximately one-third.

Risk factors include previous abuse or neglect of a brother or sister, family history of violence, physical or mental health issues for the parent or caregiver including their abuse of alcohol or other drugs<sup>42</sup>.

## Crime detection and prevention

Results from the *Family and Children's Services Strategy 2018-2024* community engagement survey ranked community safety as the third most important issue. This is a useful reminder that not all issues identified in the Strategy are there because they are considered a current problem. In fact, North Sydney is considered by its community to be a very safe place to live. In Council's Customer Satisfaction Survey 2016, 89% of the community "felt safe in North Sydney"<sup>43</sup>.

Crime statistics indicate this perception is well founded. The Bureau of Crime Statistics and Research's 2017 report on 27 crime categories in 130 Local Government Areas lists North Sydney as ranked highly in few areas (that is, performing poorly against the rest of the State per 100,000 resident population), with incidents in only eight categories occurring often enough for North Sydney to be placed in the top 50% of LGAs in the State. These and their rankings are

- Liquor offences (3)
- Fraud (15)
- Steal from person (15)
- Transport regulatory offences (26)
- Robbery (36)
- Offensive conduct (39)

<sup>40</sup> See [www.facs.nsw.gov.au/families](http://www.facs.nsw.gov.au/families)

<sup>41</sup> Ready for Life – Ready for Success, *Local Community Data Profiles, Lower North Shore*, Sydney, 2017

<sup>42</sup> [www.facs.nsw.gov.au/families/Protecting-kids/reporting-child-at-risk/harm-and-neglect/chapters/signs-of-abuse](http://www.facs.nsw.gov.au/families/Protecting-kids/reporting-child-at-risk/harm-and-neglect/chapters/signs-of-abuse)

<sup>43</sup> Every two to three years Council engages the services of a research company to conduct its Customer Satisfaction Survey, to determine community attitudes towards our services and facilities. See [https://www.northsydney.nsw.gov.au/Council\\_Meetings/Community\\_Engagement/Community\\_Satisfaction](https://www.northsydney.nsw.gov.au/Council_Meetings/Community_Engagement/Community_Satisfaction)

- Steal from dwelling (49)
- Steal from retail store (53)

It will be noted that none of these are offences of violence. Marked changes in the last 5 years are that the final two categories, both concerning stealing, have worsened since 2013 when North Sydney was ranked 101<sup>st</sup> and 77<sup>th</sup> in the State, respectively.

North Sydney is ranked the 3<sup>rd</sup> worst LGA for liquor offences (314 in 2017). There is little cause for alarm however, as in comparison, it can be noted that the City of Sydney LGA, with 2,275 incidents for the same period, is not ranked at all, on the grounds that the high number of non-residents in the City distorts the picture. North Sydney's CBD population doubles each working day and Council could make a request that it should be treated in the same way as the City and not ranked at all.

A similar allowance can be made for the over 50% increase since 2013 in the reported use of recreational drugs, with for example, North Sydney's 259 cases of possession and/or use of ecstasy compared with City of Sydney's 2,734. Both figures are for 2017<sup>44</sup>.

Council monitors and participates in crime reduction and safety strategies through:

- the Harbourside Liquor Accord (with licensees from Mosman as well as North Sydney)
- the North Shore Police Area Command Community Safety Precinct Committee (including Willoughby, Mosman, Ku-ring-gai and Lane Cove)
- Lower North Shore Domestic Violence Network, and the
- Northern Sydney Homeless Network

Council's 2016 Customer Satisfaction Survey identified lighting on streets and in public places as the main improvements that would lead residents to feel safer<sup>45</sup>.

## Road and pedestrian safety

In the five-year period 2012-2016, there were 1,336 crashes in the North Sydney LGA, of which seven were fatal. Speed, fatigue and alcohol were contributory factors. Alcohol was the lowest contributing factor to these figures locally, regionally and across the state and marginally lower in North Sydney (3.2%) than in Sydney (3.3%) and NSW (4.7%)<sup>46</sup>.

No children aged 0-12 years were included in the fatalities on North Sydney's roads in the period. Fifteen passengers aged 0-12 years and six pedestrians aged 0-12 years were casualties. Children represented 17% of all passenger casualties and 4.7% of all pedestrian casualties in the North Sydney LGA.

In 2017 Council issued over 700 penalty notices in school zones<sup>47</sup>. School Principals and Parents groups are active in supporting Council's enforcement policy. Council backs a zero-tolerance and parking enforcement program around all schools and childcare services in the interests of children's safety.

## Community Connectedness, Inclusion and Family Support

<sup>44</sup> See Local Government Area Ranking Tool: <http://www.bocsar.nsw.gov.au>

<sup>45</sup> See [https://www.northsydney.nsw.gov.au/Council\\_Meetings/Community\\_Engagement/Customer\\_Satisfaction](https://www.northsydney.nsw.gov.au/Council_Meetings/Community_Engagement/Customer_Satisfaction)

<sup>46</sup> Kite, Cassie, *Crash Analysis Report - North Sydney LGA, 2012 – 2016*, North Sydney, January 2018

<sup>47</sup> North Sydney Council, *Road Safety Newsletter*, Term 1, 2018.

## Council's current role in Community Connectedness, Inclusion and Family Supports

### Currently Council:

- Supports three local Neighbourhood Centres with premises and funds to provide services for the community including families and children, viz. The Crows Nest Centre (CNC), North Sydney Community Centre (NSCC) and the Kirribilli Centre (KC).
- Supports local organisations offering playgroups so children aged 0-5 years play and learn and parents and carers have an opportunity to socialise, e.g. the Explorers Playgroup at NSCC, Forsyth Park Playgroup and the Kirribilli Centre Playgroup.
- Funds a range of community groups through the annual community grants program which supports the delivery of services, programs, special events and other activities.
- Provides accommodation for EarlyEd Inc. which provides family-centred early intervention for children aged 0-12 with disabilities or developmental delay.
- Provides accommodation for the Community Development Officer/ Caseworker of Sydney Multicultural Community Services who provides settlement services for newly arrived migrant and refugee families.
- Supports local initiatives celebrating and valuing diversity and inclusion through a range of events such as the Gai-mariagal Festival, Harmony Day and Diwali.



- Plays an active role in the Lower North Shore (LNS) Child and Family Interagency and the LNS Multicultural Network.
- Provides a range of arts and cultural experiences for children and families including the children's community arts projects and organises various activities and creative workshops during Children's Week, held annually in October.
- Provides local activities and events such as an Annual Children's Festival, New Year's Eve Family Fun Night, the Sunset Cinema, and Twilight Food Fair.
- Supports the Nutcote Museum and its programs.
- Produces the Children's Services Guide booklet and a suite of information pamphlets including on Schools, Community Centres, Sport and Recreation Facilities and Volunteering in North Sydney.
- Produces plain English and a limited range of translated information aimed at the culturally and linguistically diverse communities:
- Maintains 60 community notice boards across the LGA.

- Maintains the North Sydney Community Directory (the LINC'S - Local Information Network for Community Services database) with online listings about local organisations and services updated annually
- Promotes seminars and workshops to inform people on topical family and children's issues.
- Utilises the three community centres - Crows Nest Centre, Kirribilli Centre, North Sydney Community Centre - as hubs of community information and activities.

### Overview

A sense of belonging and feeling connected helps develop a child's and parent's resilience, improves learning and protects against mental health issues arising. Families who are connected with their community are motivated to find information, form networks and interact, and seek support when needed. Informally, many mothers, fathers and grandparents caring for babies and toddlers, particularly in good weather, socialise in local parks and reserves. Local playgroups are another important source of support. By bringing children together to play, and allowing parents and carers to exchange ideas and experiences, they reduce isolation and offer an important form of social support at a low cost. There is a good range and mix of playgroups in North Sydney with North Sydney, Kirribilli and Forsyth Park Community Centres facilitating playgroups. The Crows Nest Centre runs a number of multicultural playgroups for Japanese and Spanish mothers, and the playgroups operating from North Sydney Community Centre and the Kirribilli Centre have diverse multicultural involvement from children and families.

### Family Support Services

Families in North Sydney have access to a variety of support services both in the area and through regional services such as Relationships Australia, CatholicCare and the Northern Centre. Relationships Australia at Neutral Bay Community Centre supports individuals and couples who wish to work on their relationships. Domestic violence, parenting issues, anxiety and depression are all common presenting problems. The groups that have been run at Neutral Bay were in response to the presenting needs of the community: Circle of Security; Women, Choice and Change; and Making Step-Families Work. CatholicCare at Naremburn supports families where children are at risk of abuse or neglect, through home visits, advocacy, personal skills development for parents and referrals to other services. The Northern Centre at Ryde provides personalised case management, counselling and support groups. It assists families experiencing issues due to separation, parenting difficulties, children with developmental or emotional issues, financial stress or cultural integration difficulties.

### Families Affected by Alcohol and Other Drugs

When the problematic use of alcohol and other drugs occurs within the complex social environment of a family it impacts the health of all. North Sydney has a relatively high density of pubs and clubs. Council participates in the local Liquor Accord and implements in selected areas Alcohol Free Zones (on streets) and Alcohol Prohibited Areas (in parks). Council's Youth Centre, Planet X, provides an environment of informal counselling and referral for young people affected by alcohol and drugs.

Consultations for this Strategy encountered concern from parents about drinking and drug taking among young people.

31% of domestic violence orders are alcohol related and North Sydney as well as the Sydney North Health Network (SNHN) region has a higher rate of alcohol attributable hospitalisations compared to NSW<sup>48</sup>.

There are a range of services which deal with drug and alcohol issues in North Sydney and regionally. The Lower North Shore Drug and Alcohol Counselling Service in St Leonards, based at the Community Health Centre, provides assessment, early intervention, ongoing treatment, and prevention of drug and alcohol and gambling problems<sup>49</sup>. In 2017, the Sydney Drug Education and Counselling Centre (SDECC) opened to service the region with a family-inclusive model to empower young people, families and their community to minimise the harms associated with the problematic use of alcohol and other drugs and any mental health issues<sup>50</sup>. The SDECC model focusses on counselling and support services for young people aged 14 to 25 years to keep them safe, out of hospital, out of the criminal justice system, contributing to their community and achieving their potential.

Mission Australia works with families and children, young people and people experiencing alcohol and drug issues and provide specialist services where people have multiple needs, including homelessness, disability and mental health issues. Other local services include an Al-Anon Family Group at St Johns Uniting Church in Neutral Bay for relatives and friends of alcoholics and SMART (Self-Management and Recovery Training) at the Kirribilli Centre which is a self-help group that assists individuals to recover from alcohol and drug use. Council's Community Centre at Neutral Bay hosts several AA and Al-Anon services.

### Early intervention for children with disabilities

Early intervention programmes support children with disabilities or development delays and their families particularly from birth until the early years of primary school. Within North Sydney, the Early Childhood Health Centres often act as a referral point.

The National Disability Insurance Scheme (NDIS) is the current vehicle for providing support for people with a disability, their families and carers. People are eligible when their disability is likely to be life-long and substantially impacts on their everyday activities. The Cerebral Palsy Alliance is the Partner organisation delivering the Early Childhood Early Intervention (ECEI) services for children aged 0-6 years, including those residing in North Sydney under the NDIS. All funding for direct services to children and young people will progressively transition from FACS to the NDIS as existing clients begin participating in the NDIS.

Another key local provider is EarlyEd Inc., based in North Sydney and providing family-centred early intervention for children aged 0-12 years with disabilities or developmental delay. Their services include groups and individual intervention sessions, support to childcare and schools, transition to school, and family support.

The Benevolent Society with an office in Chatswood offers a range of support services available to children and families during the early childhood years, providing learning and development support through play and specialist programs to help children and parents thrive.

---

<sup>48</sup> Sydney North Health Network (SNHN), Needs Assessment 2016/2017, Sydney, 2017. See: <http://sydneynorthhealthnetwork.org.au/wp-content/uploads/2016/07/SNHN-Needs-Assessment-Report-2016.pdf>

<sup>49</sup> See <http://www.nslhd.health.nsw.gov.au/Services/Directory/Pages/DrugAlcoholLNS.aspx>

<sup>50</sup> See [www.sdecc.org.au](http://www.sdecc.org.au)

A range of services that run program providing support such Northcott Disability Services are located quite a distance from North Sydney but can still deliver services locally.

## Families and children from culturally and linguistically diverse (CALD) communities

North Sydney has 23% of its community from countries where English is not the first language. North Sydney's fastest growing non-English speaking background arrivals are from China, India and the Philippines which is consistent with Australia's general CALD immigration numbers. Though we have high numbers of people from Japan, there has been a small decrease in this population. Most new arrivals have immigrated under skilled migration or family visas and many are studying. North Sydney is also home to a significant number of people born in the United Kingdom, New Zealand, South Africa and the United States of America.

The largest changes in the spoken languages of the population in North Sydney Council area between 2011 and 2016 were for those speaking Mandarin (+782 persons), Portuguese (+264 persons), Spanish (+239 persons) and Hindi (+176 persons). Other languages spoken include Cantonese, Japanese, French, Italian, Thai and German.

## Cultural Activities and Information

Council recognises that all community members benefit from participating in arts experiences. Creative expression promotes a better understanding of self, relaxation and sense of wellbeing and adds to better health outcomes. *The North Sydney Arts and Cultural Strategic Plan 2018-21* demonstrates Council's, its Library's and its community centres' commitment to public participation in the arts, from joint art projects with schools, TAFE and disability and other groups to wellbeing and other programs featuring public participation in photography, painting, pottery, writing, music and performing<sup>51</sup>. The Annual Grants and Subsidies program provides essential infrastructure and financial support where needed to make this participation possible.

## Community Information

Families require up to date information about issues affecting them and use a range of options. In North Sydney, 91.9% of households have internet access (compared with the NSW average of 82.5%). That families are comfortable accessing specialist information online is borne out by the quick survey where 50.6% of people surveyed were confident that if they had a pressing social problem, that they could find professional help to deal with it. Council finds traditional strategies are still popular and effective: community notice boards, stalls at events, brochures and pamphlets which are displayed in public buildings. Stanton Library and the three major community centres act as hubs of community information as well as deliverers of community arts opportunities. Other methods such as social media, marketing, using various social networking sites and smartphone messaging and Apps are potential growth areas for providing information.

## Housing

---

<sup>51</sup> North Sydney Council, [Arts & Culture Strategic Plan 2018-21](#), North Sydney

## Council's current role in Housing

Currently Council:

- Maintains a small but socially significant portfolio of social housing (125 units) and key worker housing (9 units) managed by Link Housing, a not-for-profit, Tier 1, accredited community housing manager. Preference is given to those on the waiting list with long term connections (5 years or more) to the North Sydney LGA
- Provides referral to housing support agencies, crisis counselling and can support where needed those completing 'Housing Pathways' application forms.
- Liaises with the NSW Department of Family and Community Services and their community housing provider, St George Community Housing, over tenancy issues (596 units) in State Government owned properties.
- Fulfils its statutory role in assessing housing development applications.
- Undertakes research in housing trends reflected in rents and price of purchase in North Sydney.
- Carries out Strategic Planning for housing such as the Military Road Corridor Planning Study.

## Affordable Housing

The North Sydney LGA is prohibitive for first home buyers. Overall, New South Wales has the lowest proportion of first-home buyers in the nation, accounting for just 8.1 per cent of total sales, and the proportion continues to fall across time as shown below.

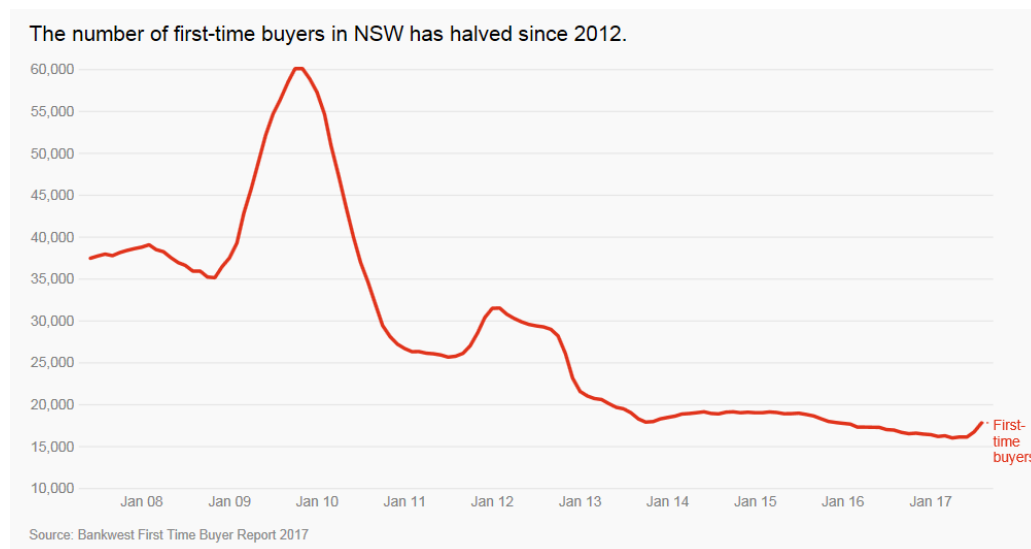


Chart 10: First-time home buyers NSW 2008-17

A Study of every Local Government Area (LGA) in Australia used ABS income data for the average combined salary for two people aged between 25-34, saving 20 per cent of their pre-tax income in a high-interest savings account. It takes Sydney first-home buyers much longer

than those living in other capital cities to save the 20 per cent deposit for a median-priced home<sup>52</sup>.

In Sydney, buyers require 8.2 years to save the deposit required to purchase a median-priced house, three years longer than the national capital city average of 4.9 years – but in North Sydney, the wait is even longer - 12.9 years. This means that local housing is unaffordable for a high proportion of existing local residents and workers in the LGA<sup>53</sup>, particularly, long-term older residents, younger families who are starting to have children, and low to moderate income ‘key workers’ in industries such as childcare, education, health and hospitality. Families on a single wage, are particularly vulnerable to ‘housing stress’ and those on low and moderate incomes are largely ‘priced-out’ of the market. Those that remain in the area are likely to be already living in community housing, or renting privately and unsustainably.

---

<sup>52</sup> Diss, Kathryn & Ting Inga, A tale of two cities reveals vast gulf in housing affordability, *ABC News*, 5 December 2017. See [http://www.abc.net.au/news/2017-12-05/how-long-does-it-take-to-save-a-home-deposit-in-australia/9225272?WT.mc\\_id=newsmail&WT.tsrc=Newsmail](http://www.abc.net.au/news/2017-12-05/how-long-does-it-take-to-save-a-home-deposit-in-australia/9225272?WT.mc_id=newsmail&WT.tsrc=Newsmail)

<sup>53</sup> Housing is considered to be ‘affordable’ when it is priced so that other essential costs like food, clothing, transport and services can be adequately met. This is generally where housing costs are less than 30% of gross household income for low to moderate-income households (those whose income is up to 120% of median household income for their LGA). Low to moderate income households paying more than this on housing costs are generally deemed to be in ‘housing stress’ (at risk of ‘after housing poverty’).



Issue Area	Strategies	Council's Community Strategic Plan	2018/19	2019/20	2020/21	2021/22	2022/23	2023/24
	Investigate options for providing Kelly's Place Child Care Centre with better amenity	4.1.2 4.1.3 5.1.2	•	•	•			
<b>Out of School Hours (OOSH) Care Services</b>	Continue supporting existing Before and After School Care (BASC) services through leases with community groups in Council buildings	4.1.2	•	•	•	•	•	•
	Undertake an architectural review of whether after school care and the needs of the existing childcare services at Forsyth Park Community Centre can be reconciled	2.1.5 4.1.2 4.1.3		•				
	Continue to advocate with the Department of Education for on-site provision of spaces and facilities to meet the growing demand for Out of School Hours (OOSH) places attached to primary schools, in particular Cammeraygal High in West Street Cammeray due to open in 2020	4.1.9	•	•	•			
	Continue to advocate with nongovernment schools for on-site provision of spaces and facilities.	4.1.9 5.1.2	•	•	•	•	•	•
	Continue providing Vacation Care activities for children during school holidays including through Stanton Library, the Bushcare Team, and through funding for community groups to provide activities.	4.1.2	•	•	•	•	•	•

Issue Area	Strategies	Council's Community Strategic Plan	2018/19	2019/20	2020/21	2021/22	2022/23	2023/24
<b>Health and Wellbeing</b>	Continue its joint venture with NSW Health to provide quality Early Childhood Health Centres facilities at Crows Nest and Cremorne.	4.1.3 4.1.9	•	•	•	•	•	•
	Continue its support for Guthrie Child Care Centre at Wollstonecraft.	4.1.5	•	•	•	•	•	•
	Support NSW Health's resourcing and promotion of healthy eating and active living programs for children through children's services, schools and within the community.	4.1.10	•	•	•	•	•	•
	Support the Department of Education's use of school counsellors to enable early intervention with children and families and provide programs to promote mental health and wellbeing.	4.1.9	•	•	•	•	•	•
	Support the Department of Education and non-Government schools zero tolerance approach to bullying and implementation of anti-bullying programs.	4.1.9	•	•	•	•	•	•
	Continues a risk management approach to parks, playgrounds, ovals, recreation and sporting facilities.	4.1.11	•	•	•	•	•	•
	Continue providing programmes which facilitate children's access to the Coal Loader, its events and activities and to other environmental and sustainability programmes.	1.1.2 1.2.3	•	•	•	•	•	•

Issue Area	Strategies	Council's Community Strategic Plan	2018/19	2019/20	2020/21	2021/22	2022/23	2023/24
	Continue to fund the Green School grant program to support pre-schools, childcare centres, primary and high schools in North Sydney to develop, implement, review and celebrate school-based environmental projects.	1.1.2 1.2.3	•	•	•	•	•	•
	Continue liaising with the Department of Education and school principals on local issues, and in particular, pressure on public primary schools from numbers of new students.	4.3.1	•	•	•	•	•	•
	Continue Stanton Library's provision of activities, events and resources through the Children's and Young Adult Library, and Local History programs	4.3.2	•	•	•	•	•	•
	Continue to facilitate access for children and young people to resources and activities to support STEAM based learning.	4.3.2 4.3.3	•	•	•	•	•	•
	Monitor school curriculum to ensure library resources are developed to support local students	4.3.2 4.3.3	•	•	•	•	•	•
	Continue to develop the dual language picture book collection for children from culturally and linguistically diverse (CALD); and a range of resources celebrating Indigenous culture	4.3.2 4.3.3	•	•	•	•	•	•

Issue Area	Strategies	Council's Community Strategic Plan	2018/19	2019/20	2020/21	2021/22	2022/23	2023/24
	Deliver annual induction of parents into resources at Stanton Library to support family life	4.3.2 4.3.3	•	•	•	•	•	•
<b>Child and Family Safety</b>	Continue to lobby the State Government to extend its funding under the NSW Domestic and Family Violence Blueprint for Reform 2016-2021: Safer Lives for Women, Men and Children.	5.1.1	•	•	•	•	•	•
	Continue to support Mary's House Refuge through the Grants and Subsidies Program.	4.1.5	•	•	•	•	•	•
	Continue to support ongoing State Government funding of Women's Community Shelters	5.1.1	•	•	•	•	•	•
	Continue to support and be an active member of the LNS DV Network.	4.1.2	•	•	•	•	•	•
	Supports safety audits by the NSW Police as necessary	2.2.2 4.1.11	•					
	Continue to deliver free child restraint checking days.	2.3.5	•	•	•	•	•	•
	Continue to liaise with local schools to run Road Safety Campaigns	2.3.5	•	•	•	•	•	•
	Continue parking enforcement around all the schools in North Sydney.	2.3.5	•	•	•	•	•	•
	Continually improve paths of travel for pedestrians, including for prams, wheelchairs and scooters	4.1.1	•	•	•	•	•	•

Issue Area	Strategies	Council's Community Strategic Plan	2018/19	2019/20	2020/21	2021/22	2022/23	2023/24
<b>Community connectedness, Inclusion and Family Support</b>	Continue to provide opportunities for the enjoyment of and participation in art for children and families	4.2.1	•	•	•	•	•	•
	Continue to implement the Strategies in the Recreation Needs Study 2015	1.4.3 2.1.1	•	•	•	•	•	•
	Refurbish North Sydney Olympic Pool and monitor further opportunities to expand existing recreation facilities to meet projected demand	1.4.3 2.1.1 2.1.6	•	•	•	•	•	•
	Continues to encourage NSW Health to offer parenting programs.	4.1.2	•	•	•	•	•	•
	Continue to provide the current range of strategies in disseminating information to families and about children's issues	5.3.2 5.3.3	•	•	•	•	•	•
	Encourages the Child and Family Interagency to consider a working group into promoting innovative methods to reach families through parenting programs.	5.3.2 5.3.3	•					
	Continue to support the three local Neighbourhood Centres with premises and funds to provide services for families and children, The Crows Nest Centre (CNC), North Sydney Community Centre (NSCC) and the Kirribilli Centre (KC).	4.1.2 4.1.5	•	•	•	•	•	•
	Continue to fund a range of community groups through the annual community	4.1.5	•	•	•	•	•	•

Issue Area	Strategies	Council's Community Strategic Plan	2018/19	2019/20	2020/21	2021/22	2022/23	2023/24
	grants program which supports the delivery of services, programs, special events and other activities which meet identified community priorities that benefit the North Sydney community.							
	Continue to provide accommodation for Early Education (EarlyEd) Inc.	4.1.2 4.1.5	•	•	•	•	•	•
	Continue to provide premises for Government funded Sydney Multicultural Community Services while funded.	4.1.2 4.1.5	•	•	•	•	•	•
	Continue to support local initiatives celebrating and valuing diversity and inclusion.	4.1.6	•	•	•	•	•	•
	Continue to produce plain English and translated information aimed at the culturally and linguistically diverse communities.	4.1.6 5.3.1	•	•	•	•	•	•
	Continue to play an active role in the Lower North Shore Child and Family Interagency and the LNS Multicultural Network.	4.1.2	•	•	•	•	•	•
	Work with stakeholders to promote inclusion for cultural groups and early intervention services for children with a disability.	4.1.2 4.1.9	•	•	•	•	•	•
<b>Housing</b>	Continue to support families in housing stress, by referral to housing support agencies, crisis counselling and by	4.1.2	•	•	•	•	•	•

Issue Area	Strategies	Council's Community Strategic Plan	2018/19	2019/20	2020/21	2021/22	2022/23	2023/24
	assisting in completing 'Housing Pathways' application forms.							
	Continue support and future partnerships with Social and Key Worker Housing providers including Link Housing for families and children	3.4.7	•	•	•	•	•	•