

## Roadside tree removal and trimming work along Military Road, Neutral Bay from Monday 25 September

The NSW Government is delivering improved public transport between the Northern Beaches and the Sydney CBD. This includes service and infrastructure upgrades to provide a new B-Line bus service.

Transport for NSW has engaged Downer Mouchel to carry out tree removal and trimming work along Military Road, Neutral Bay to enable the new double decker B-Line bus to safely travel along the route.

### Details of work activities

Work will involve removal of selected trees and trimming of overhanging branches along Military Road between Hampden Avenue and Merlin Street, Neutral Bay to ensure safe clearance for buses. Please refer to the map on the next page.

To ensure worker and public safety, the majority of the work will take place at night when traffic volumes are lower. Work at night will take place from **Monday 25 September to Friday 17 November** between the hours of **8pm to 5am** Sunday to Thursday, weather permitting.

Work will also be carried out during the day between 7am and 6pm, where possible.

### Work will involve:

- use of tree cutting equipment and hand tools to remove trees and overhanging branches
- use of an elevated work platform to access higher tree branches
- traffic control and lane closures to ensure safe working distances
- loading trees on the back of a truck to be chipped and recycled off site

### Minimising impacts on the community and environment

There may be some noise associated with this work and we will make every effort to minimise impacts on the community. We will do this by:

- using electric and hydraulic tools instead of petrol tools after 11pm
- installing a foam tray lining to muffle sounds of material loading into trucks
- staging the work to minimise noise impacts (for example, completing noisier works such as stump grinding during the day)
- using 'squawkers' rather than tonal beepers on reversing vehicles
- engines will be switched off when equipment is not in use for extended periods
- completing monitoring to ensure that noise levels are being managed effectively

Landscaping and replacement planting of trees will occur in consultation with North Sydney Council.

## Traffic, pedestrian and parking changes

There will be some temporary traffic and pedestrian changes to ensure the work zone is safe. Lane closures will be in place and may affect travel times. Parking may also be temporarily affected as the work crew set up the site at the start of the shift. We will notify residents and businesses about these changes in advance.

Please keep to speed limits and follow the direction of traffic controllers and signs. For the latest traffic updates, you can call 132 701, visit [livetraffic.com](http://livetraffic.com) or download the Live Traffic NSW App.

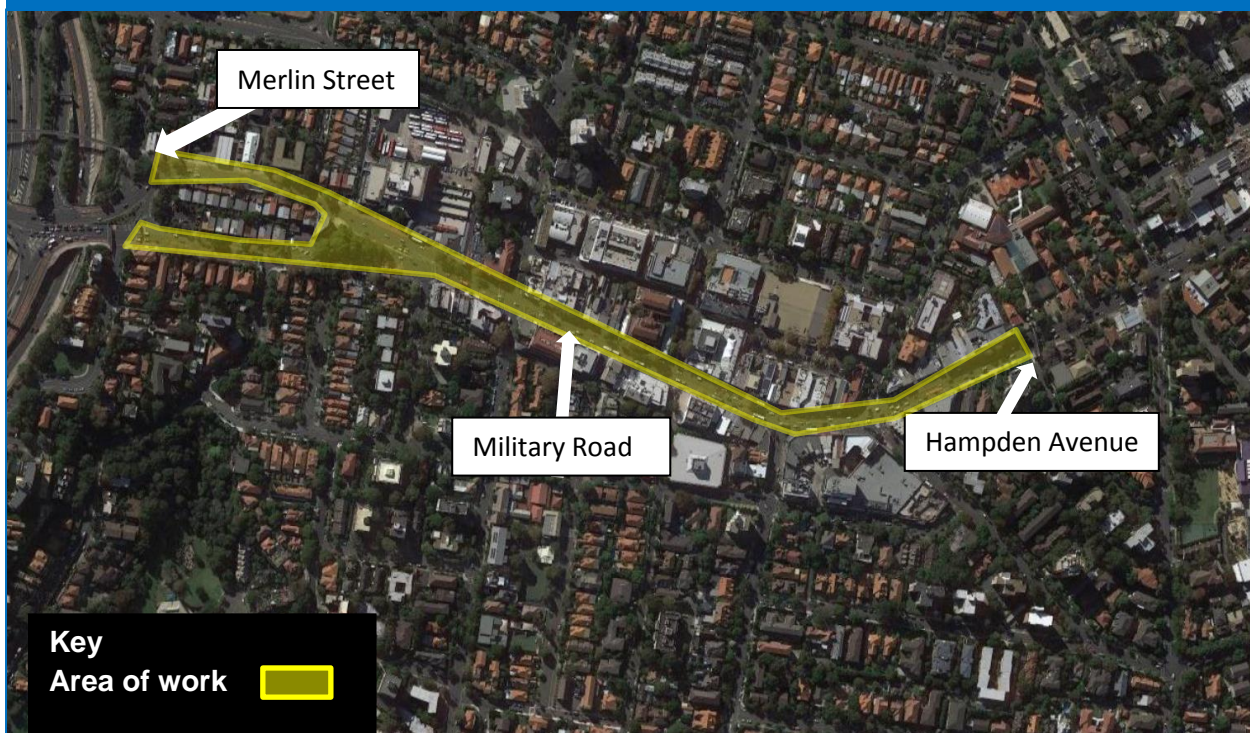
## Contact information

If you have any questions or would like to meet with the project team to learn more about the work you can contact us using the details below:

- call **1800 048 751** (24 hours),
- email **[projects@transport.nsw.gov.au](mailto:projects@transport.nsw.gov.au)** or
- visit **[b-line.transport.nsw.gov.au](http://b-line.transport.nsw.gov.au)**

Thank you for your patience during this important work.

### Area of work- Neutral Bay



This document contains important information about public transport projects in your area. If you require the services of an interpreter, please contact the Translating and Interpreting Service on 131 450 and ask them to call Transport for NSW on (02) 9200 0200. The interpreter will then assist you with translation.